



MEETING MATERIALS

July 7, 2010

Lone Star Convention and Expo Center

Region H Water Planning Group
10:00 AM Wednesday
July 7, 2010
Lone Star Convention and Expo Center
9055 FM Road 1484, Conroe, TX

Agenda

1. Introductions.
2. Review and approve minutes of April 7, 2010 meeting.
3. Receive presentation from Consultant Team regarding comments to the Initially Prepared Plan and discuss.
4. Receive presentation from the Consultant Team regarding recommended changes to the Initially Prepared Plan based on Executive Committee discussion.
5. **Receive public comments on specific issues related to agenda items 3-4 and 6-8.** (Public comments limited to 3 minutes per speaker)
6. Discuss and act to approve changes to the Initially Prepared Plan.
7. Receive presentation from Consultant Team regarding progress on Regional Water Plan Development and discuss.
8. Agency communications and general information.
9. **Receive public comments.** (Public comments limited to 3 minutes per speaker)
10. Next Meeting: Proposed for August 4, 2010
11. Adjourn

Agenda Item 2

Review and approve minutes of April 7, 2010 meeting.

Agenda Items 3-6

Receive presentation from Consultant Team regarding comments to the Initially Prepared Plan and discuss.

Receive presentation from the Consultant Team regarding recommended changes to the Initially Prepared Plan based on Executive Committee discussion.

Receive public comments on specific issues related to agenda items 3-4 and 6-8.

Discuss and act to approve changes to the Initially Prepared Plan.



Schedule		
Date	Event	Activity
07/07/10	RWPG Meeting	Review Comments to Initially Prepared Plan
08/04/10	RWPG Meeting	Adopt FINAL Regional Water Plan
09/01/10	Due Date	Submit Regional Water Plan

Focus for Today's Meeting

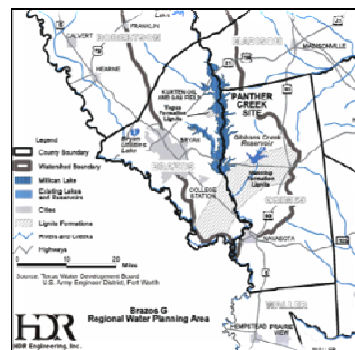
- Comments to the Initially Prepared Plan
 - Millican Reservoir
 - Unique Reservoir Designations
 - Other Comments
- Progress Since IPP Submittal
 - DB12
 - IFR Survey
 - Socioeconomic Impacts

Millican Reservoir Strategy

Public Comment

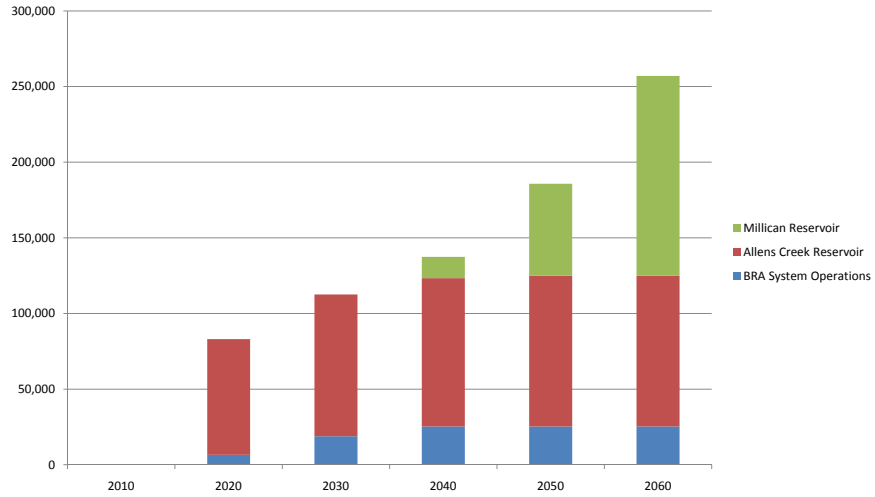
Comment: "The Millican Reservoir Strategy does not represent a viable option for meeting demands in the lower Brazos River Basin due to impacts to land owners, local resources, and the environment."

- 71,032-acre inundated area
- Yegua Formation Lignite
- Kurten Oil and Gas Field
- Impacts to Species



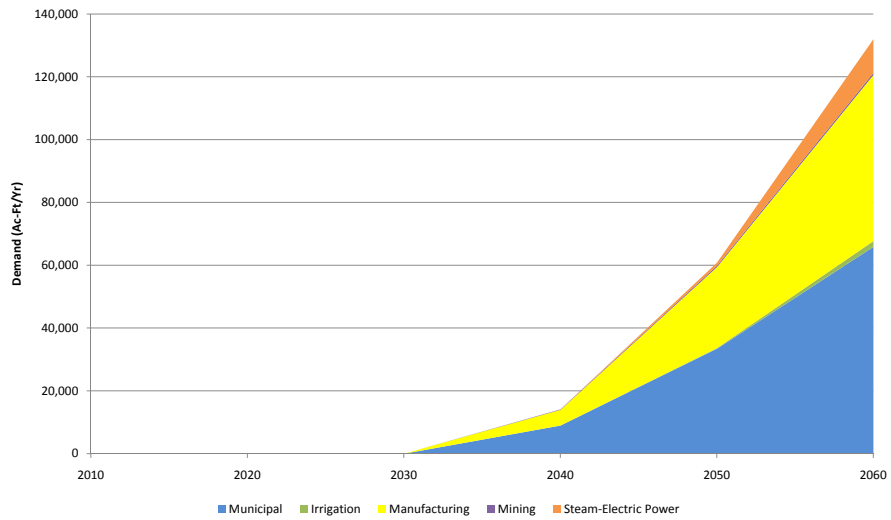
Millican Reservoir Strategy

Major Brazos Basin Strategies



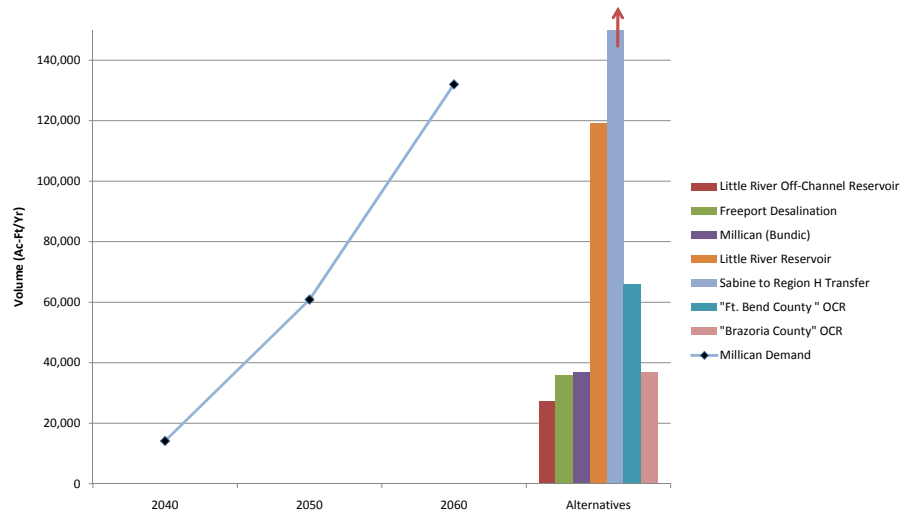
Millican Reservoir Strategy

Millican Reservoir Demands



Millican Reservoir Strategy

Potential Alternatives



Millican Reservoir Strategy

Potential Alternatives

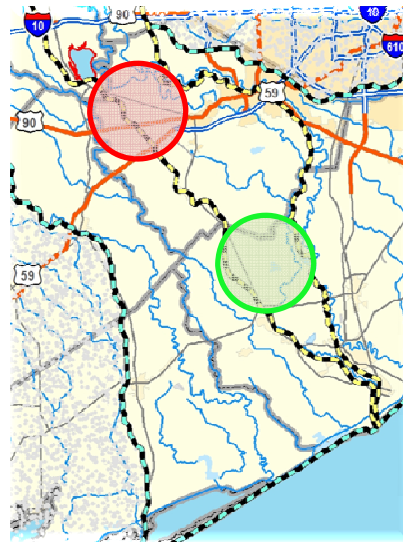
- Little-River and Little River Off-Channel
 - Local opposition
- Millican (Bundic)
 - Similar opposition as Panther Creek
- Bedias Reservoir
 - Local opposition and out-of-basin solution
- Sabine to Region H Transfer
 - Out-of-basin solution
- Freeport Desalination
 - No current activity
- Lower-Basin Reservoirs
 - New strategy for storage

Millican Reservoir Strategy

REGION H
Water Planning Group

Lower-Basin Reservoirs

- Advantages over previously proposed storage projects
 - Local to demand
 - Off-channel placement
 - Easier to scale
 - Beneficial placement in the basin
- Disadvantages
 - Limited study at this point
 - Operational costs
- Assume interim supply from other project in 2040



Millican Reservoir Strategy

REGION H
Water Planning Group

Lower-Basin Reservoirs

Fort Bend County OCR

- 2050 development
- 80,000 ac-ft reservoir
- 25 ft depth
- ≈ 3,400 acre project area
- 200 MGD pump station
- 66,000 ac-ft firm yield
- \$688 per ac-ft

Brazoria County OCR

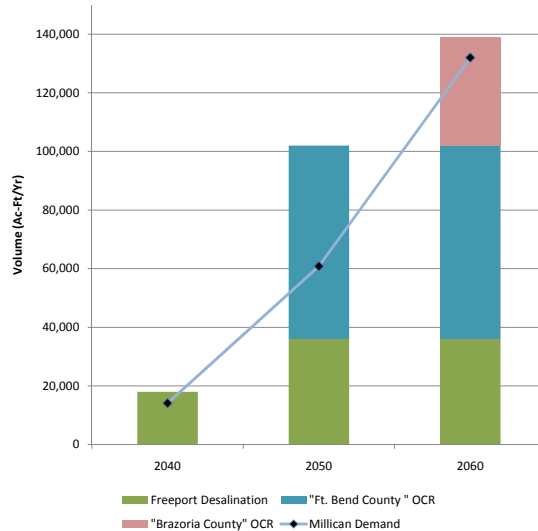
- 2060 development
- 60,000 ac-ft reservoir
- 20 ft depth
- ≈ 3,200 acre project area
- 100 MGD pump station
- 37,000 ac-ft firm yield
- \$782 per ac-ft

Millican Reservoir Strategy

REGION H
Water Planning Group

Alternative Strategy Recommendation

- Combination of Strategies
 - Desalination
 - Off-Channel Storage
- Phased development to accommodate growth
- Excess supply in 2050 to provide for regional needs
- Replaces need for Millican Reservoir



Unique Reservoir Sites

REGION H
Water Planning Group

Public Comment

Comment: "Unique Reservoir Site designations place an undue burden upon local interests."

- Millican Reservoir (2011 IPP strategy)
- Bedias Reservoir (not a 2011 IPP strategy)
- Little River Reservoir (not a 2011 IPP strategy)
- Little River OCR (not a 2011 IPP strategy)

Unique Reservoir Sites

URS in Past Plans

Project	Recommended WMS in <u>2011</u> RWP?	Recommended WMS in <u>2006</u> RWP?	Recommended WMS in <u>2001</u> RWP?
Allens Creek			
Bedias			
Little River			
Little River Off-Channel			

Public Comments

Unique Reservoir Sites

- All sites are already designated by the legislature as URS
- Inclusion in 2011 RWP will not affect this status without legislative action



Other Updated WMS

- Updates to existing projects
 - Updates to COH infrastructure WMS
 - Updates to Pearland SWTP WMS
 - Montgomery County MUDs 8 & 9
 - Reuse
 - Brackish Desal

- Additional projects
 - Dow Off-Channel Reservoir
 - Addition of River Plantation MUD GRP
 - Addition of LLWSSSC surface water project

Other Public Comments

- Concern regarding adequacy of Public Hearing notification procedures

- Madison County Steam-Electric Demands
 - Madison-Bell Power Plant project

Other Public Comments

- Need for increased conservation
 - Water conservation goals should be increased
 - Could delay or replace new reservoirs or IBTs

- Opposition to interbasin transfers
 - Increased system complexity and risks
 - Environmental impacts

Other Public Comments

- Designation of Unique Stream Segments
 - Approval for existing USS designations
 - Desire to see additional segments added

- Freshwater Inflows
 - Support for “Regime Group” position
 - Impacts to oyster habitat
 - Areas outside of Galveston Bay

Other Public Comments

- Additional Concerns
 - Climate change impacts
 - Exceedance of local population carrying capacity
 - Environmental impact reassessment for some WMS
 - WMS impacts on water quality
 - Financing mechanisms and WMS costs
 - Plan amendment procedures

Other Public Comments

- Requests by the Planning Group?

Item 5: *Receive public comments on specific issues related to agenda items 3-4 and 6-8.*

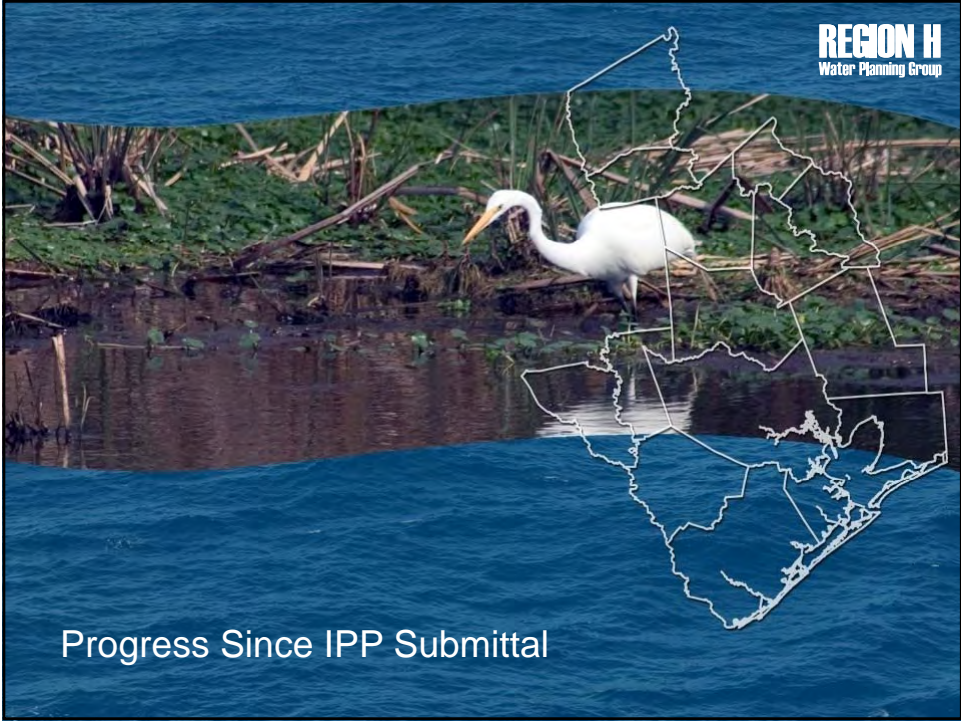
Planning Group Action

Item 6: *Discuss and act to approve changes to the Initially Prepared Plan.*

- Millican Reservoir
 - Replace Millican Reservoir in the Plan with a combination of seawater desalination and off-channel storage and remove URS designation
 - Recommend the concept for further study
- Unique Reservoir Site Designations
 - Inclusion of Allens Creek, Bedias, Little River, Little River Off-Channel Reservoirs
- Other Comments
 - Comments and revisions presented prior to today.

Agenda Item 7

Receive presentation from Consultant Team regarding progress on Regional Water Plan Development and discuss.



DB12 Updates

- Texas Water Development Board's Regional Planning Data Web Interface
- The purpose of DB12 is to collect and analyze electronic water planning data.
- Data sorted by Sources, WUGs, WVPs and WMS

The Texas Water Development Board
Regional Water Planning Data Web Interface

Home | Menu | Profile | Search | Download | Help | Logout

Logged in as: Chris Prussner

INTRODUCTION

Welcome to the Texas Water Development Board (TWDB) **Regional Water Planning Data Web Interface**. Here you will be able to view and edit data for the current Regional Water Planning cycle.

Menu:

1. Sources:
 - [View/Edit Sources](#)
 - [Add Source Request](#)
2. Water User Groups:
 - [View/Edit WUGs](#)
 - [Add WUG Request](#)
3. Wholesale Water Providers:
 - [View/Edit WVPs](#)
 - [Add WVP Request](#)
4. Water Management Strategies:
 - [View/Edit WMS Projects](#)
 - [Request to Add WMS Project](#)
5. Reports

Profile:

- [View Profile](#)
- [Edit Profile](#)

Search:

- [Search Sources](#)
- [Search WUGs](#)
- [Search WVPs](#)
- [Search WMS](#)

Download:

- [Download File](#)

Help:

- [Web Site](#)

Menu:

1. Sources - Users can view, edit and add current sources.
2. Water User Groups (WUGs) - Users can view, edit and add current WUGs.
3. Wholesale Water Provider (WVPs) - Users can view, add and add current WVPs.
4. Water Management Strategies - Users can view, edit and add WMS projects.

Profile:

1. View Profile - Users may view their user profile within this application.
2. Edit Profile - Users may update their user profile.

Search: Users may search for a specific source or WUG by name, region, county or basin.

Download: User can create and download files.

Help: A completion and explanation of terms and directions for updating the information.

DB12 Updates

DB12 Updates

- **Level 1 Exception Level Reports – March 22, 2010**
 - Supply Exceptions
- **Level 2 Exception Level Reports – March 30, 2010**
 - Customer Exceptions
- **Level 3 Exception Level Reports – April 28, 2010**
 - IBT Correction
 - Water Right Verification
 - Potential Interregional Conflicts



Task 9 – Water Infrastructure Financing

REGION H
Water Planning Group

- Quantifying need for financial assistance to either a WUG or WWP for future planning, design and construction projects.
- Funding is based on water supply needs through 2060

Address <http://www.twdb.state.tx.us/apps/ifr/ifrsurvey.aspx?entityid=179>

[Contact Webmaster](#)
[Accessibility Policy](#)
[Link Policy](#)
[Privacy Policy](#)

Texas Water Development Board
Web Application

[Home](#)

IFR Survey

Contact Information

1. Name:	<input type="text"/>
2. Phone Number:	<input type="text"/>
3. Email:	<input type="text"/>
4. Comments:	<input type="text"/>

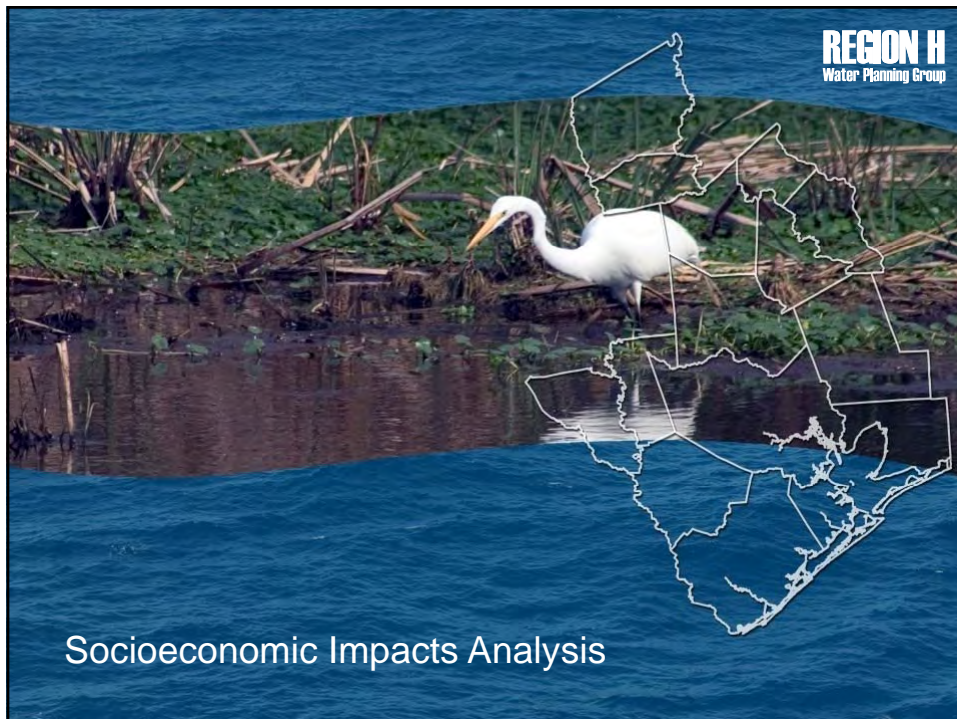
[Back](#) [Next](#)

Task 9 – Water Infrastructure Financing

REGION H
Water Planning Group

IFR Surveys

- IFR Information Request to 223 WUGS and WWP
- Continuing to responding to inquiries
- Responses -
 - Online Survey Application is currently being updated by WUGs and WWP
 - 5 (2.24%) have completed the survey as of June 22
- Results will be included in Chapter 9



Socioeconomic Impacts Analysis

Socioeconomic Impacts Analysis

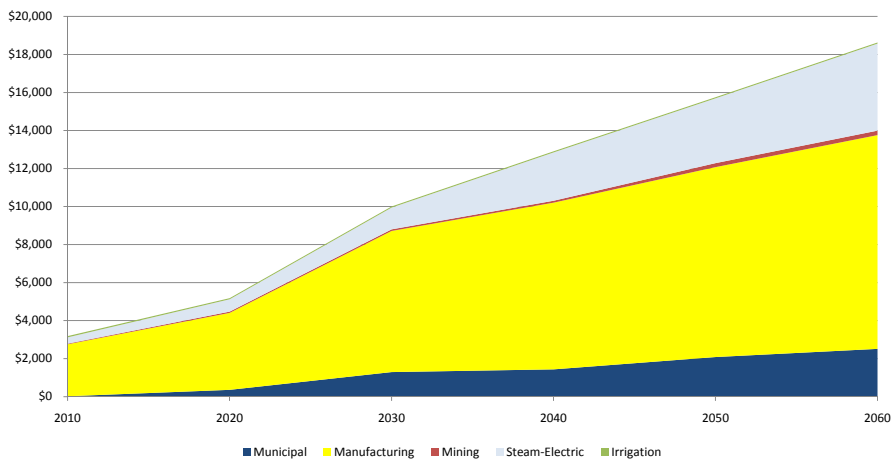
REGION H
Water Planning Group

- Executed by TWDB at request of Region H Group
- Uses shortages from Planning Group
- Point estimates of 1-year drought at 10-year intervals
- Multiple impacts examined
 - Sales, income, and tax revenue
 - Jobs
 - Population
 - School enrollment
- Results to be incorporated into Chapter 4 Of the RWP

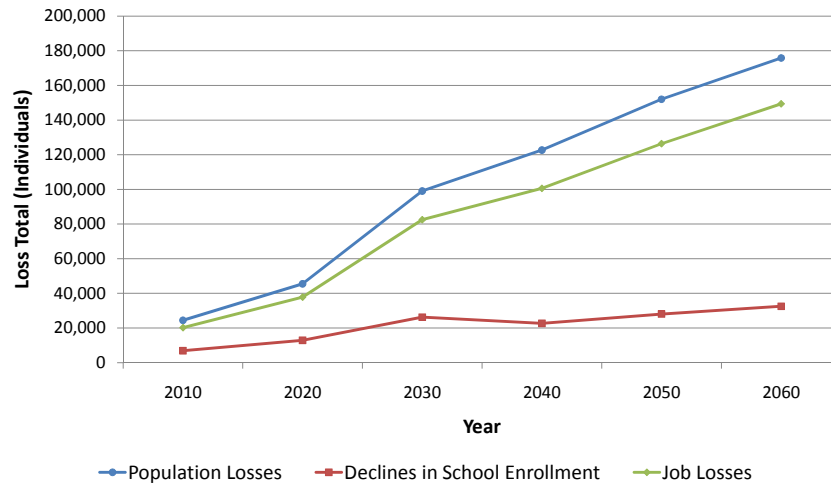
Socioeconomic Impacts Analysis

REGION H
Water Planning Group

Lost Income by Sector
(Millions)



Socioeconomic Impact Analysis



Socioeconomic Impacts Analysis

- Results to be incorporated into Chapter 4 of the RWP



TEXAS WATER DEVELOPMENT BOARD



James E. Herring, *Chairman*
Lewis H. McMahan, *Member*
Edward G. Vaughan, *Member*

J. Kevin Ward
Executive Administrator

Jack Hunt, *Vice Chairman*
Thomas Weir Labatt III, *Member*
Joe M. Crutcher, *Member*

May 17, 2010

Mr. Mark Evans
Chairman, Region H Regional Water Planning Group
c/o Trinity County
P.O. Box 457
Groveton, Texas 75845-0457

Re: Socioeconomic Impact Analysis of Not Meeting Water Needs for the 2011 Region H
Regional Water Plan

Dear Chairman Evans:

We have received your request for technical assistance to complete the socioeconomic impact analysis of not meeting water needs. In response, enclosed is a report that describes our methodology and presents the results. Section 1 provides an overview of the methodology, and Section 2 presents results for at the regional level, and Appendix 2 show results for individual water user groups.

If you have any questions or comments, please feel free to contact me at (512) 463-7928 or by email at stuart.norvell@twdb.state.tx.us.

Sincerely,

Stuart Norvell
Manager, Water Planning Research and Analysis
Water Resources Planning Division

SN/ao

Enclosure

c: Temple McKinnon, TWDB
S. Doug Shaw, TWDB

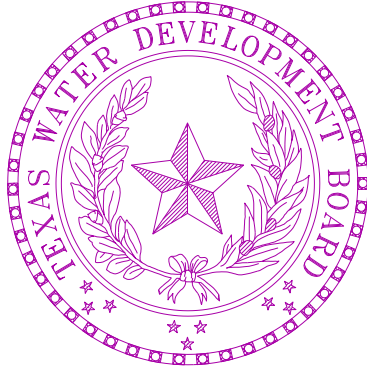
Our Mission

To provide leadership, planning, financial assistance, information, and education for the conservation and responsible development of water for Texas.

P.O. Box 13231 • 1700 N. Congress Avenue • Austin, Texas 78711-3231
Telephone (512) 463-7847 • Fax (512) 475-2053 • 1-800-RELAYTX (for the hearing impaired)
www.twdb.state.tx.us • info@twdb.state.tx.us

TNRIS - Texas Natural Resources Information System • www.tnris.state.tx.us
A Member of the Texas Geographic Information Council (TGIC)





Socioeconomic Impacts of Projected Water Shortages for the Region H Regional Water Planning Area

Prepared in Support of the 2011 Region H Regional Water Plan

Stuart D. Norvell, Managing Economist
Water Resources Planning Division
Texas Water Development Board
Austin, Texas

S. Doug Shaw, Agricultural Economist
Water Resources Planning Division
Texas Water Development Board
Austin, Texas

May 2010

Table of Contents

Section	Title	Page
	Introduction.....	3
1.0	Methodology.....	3
1.1	Economic Impacts of Water Shortages.....	3
1.1.1	General Approach.....	8
	General Assumptions and Clarifications of the Methodology.....	9
1.1.2	Impacts to Agriculture.....	9
	Irrigation.....	9
	Livestock.....	12
1.1.3	Impacts to Municipal Water User Groups.....	13
	Disaggregation of Municipal Water Demands.....	13
	Domestic Water Uses.....	14
	Commercial Businesses.....	17
	Water Utility Revenues.....	18
	Horticulture and Landscaping.....	18
	Recreational Impacts.....	19
1.1.4	Impacts to Industrial Water User Groups.....	20
	Manufacturing.....	20
	Mining.....	20
	Steam-electric.....	21
1.2	Social Impacts of Water Shortages.....	21
2.0	Results.....	22
2.1	Overview of Regional Economy.....	22
2.2	Impacts to Agricultural Water User Groups.....	23
2.3	Impacts to Municipal Water User Groups.....	24
2.4	Impacts to Manufacturing Water User Groups.....	24
2.5	Impacts to Mining Water User Groups.....	25
2.6	Impacts to Steam-electric Water User Groups.....	26
2.7	Social Impacts.....	26
2.8	Distribution of Impacts by Major River Basin.....	27
	Appendix 1: Economic Data for Individual IMPLAN Sectors.....	29
	Appendix 2: Impacts by County.....	33
Tables		
1	Crop Classifications and Corresponding IMPLAN Crop Sectors.....	9
2	Summary of Irrigated Crop Acreage and Water Demand.....	9
3	Average Gross Sales Revenues per acre for Irrigated Crops.....	10
4	Description of Livestock Sectors.....	13
5	Water Use and Costs Parameters Used to Estimated Domestic Water Demand Functions.....	15
6	Economic Losses Associated with Domestic Water Shortages.....	16
7	Impacts of Municipal Water Shortages at Different Magnitudes of Shortages.....	19
8	Regional Baseline Economy by Water User Group.....	24
9	Economic Impacts of Water Shortages for Agricultural Water User Groups.....	24
10	Economic Impacts of Water Shortages for Municipal Water User Groups.....	25
11	Economic Impacts of Water Shortages for Manufacturing Water User Groups.....	25
12	Economic Impact of Water Shortages for Mining Water User Groups.....	26
13	Economic Impacts of Water Shortages for Steam-electric Water User Groups.....	27
14	Social Impacts of Water Shortages.....	29

Introduction

Water shortages during drought would likely curtail or eliminate economic activity in business and industries reliant on water. For example, without water farmers cannot irrigate; refineries cannot produce gasoline, and paper mills cannot make paper. Unreliable water supplies would not only have an immediate and real impact on existing businesses and industry, but they could also adversely affect economic development in Texas. From a social perspective, water supply reliability is critical as well. Shortages would disrupt activity in homes, schools and government and could adversely affect public health and safety. For all of the above reasons, it is important to analyze and understand how restricted water supplies during drought could affect communities throughout the state.

Administrative rules require that regional water planning groups evaluate the impacts of not meeting water needs as part of the regional water planning process, and rules direct TWDB staff to provide technical assistance: *“The executive administrator shall provide available technical assistance to the regional water planning groups, upon request, on water supply and demand analysis, including methods to evaluate the social and economic impacts of not meeting needs”* [(§357.7 (4)(A)]. Staff of the TWDB’s Water Resources Planning Division designed and conducted this report in support of the Region H Regional Water Planning Group (Region H).

This document summarizes the results of our analysis and discusses the methodology used to generate the results. Section 1 outlines the overall methodology and discusses approaches and assumptions specific to each water use category (i.e., irrigation, livestock, mining, steam-electric, municipal and manufacturing). Section 2 presents the results for each category where shortages are reported at the regional planning area level and river basin level. Results for individual water user groups are not presented, but are available upon request.

1. Methodology

Section 1 provides a general overview of how economic and social impacts were measured. In addition, it summarizes important clarifications, assumptions and limitations of the study.

1.1 Economic Impacts of Water Shortages

1.1.1 General Approach

Economic analysis as it relates to water resources planning generally falls into two broad areas. Supply side analysis focuses on costs and alternatives of developing new water supplies or implementing programs that provide additional water from current supplies. Demand side analysis concentrates on impacts or benefits of providing water to people, businesses and the environment. Analysis in this report focuses strictly on demand side impacts. When analyzing the economic impacts of water shortages as defined in Texas water planning, three potential scenarios are possible:

- 1) Scenario 1 involves situations where there are physical shortages of raw surface or groundwater due to drought of record conditions. For example, City A relies on a reservoir with average conservation storage of 500 acre-feet per year and a firm yield of 100 acre feet. In 2010, the city uses about 50 acre-feet per year, but by 2030 their demands are expected to increase to 200

acre-feet. Thus, in 2030 the reservoir would not have enough water to meet the city's demands, and people would experience a shortage of 100 acre-feet assuming drought of record conditions. Under normal or average climatic conditions, the reservoir would likely be able to provide reliable water supplies well beyond 2030.

- 2) Scenario 2 is a situation where despite drought of record conditions, water supply sources can meet existing use requirements; however, limitations in water infrastructure would preclude future water user groups from accessing these water supplies. For example, City B relies on a river that can provide 500 acre-feet per year during drought of record conditions and other constraints as dictated by planning assumptions. In 2010, the city is expected to use an estimated 100 acre-feet per year and by 2060 it would require no more than 400 acre-feet. But the intake and pipeline that currently transfers water from the river to the city's treatment plant has a capacity of only 200 acre-feet of water per year. Thus, the city's water supplies are adequate even under the most restrictive planning assumptions, but their conveyance system is too small. This implies that at some point – perhaps around 2030 - infrastructure limitations would constrain future population growth and any associated economic activity or impacts.
- 3) Scenario 3 involves water user groups that rely primarily on aquifers that are being depleted. In this scenario, projected and in some cases existing demands may be unsustainable as groundwater levels decline. Areas that rely on the Ogallala aquifer are a good example. In some communities in the region, irrigated agriculture forms a major base of the regional economy. With less irrigation water from the Ogallala, population and economic activity in the region could decline significantly assuming there are no offsetting developments.

Assessing the social and economic effects of each of the above scenarios requires various levels and methods of analysis and would generate substantially different results for a number of reasons; the most important of which has to do with the time frame of each scenario. Scenario 1 falls into the general category of static analysis. This means that models would measure impacts for a small interval of time such as a drought. Scenarios 2 and 3, on the other hand imply a dynamic analysis meaning that models are concerned with changes over a much longer time period.

Since administrative rules specify that planning analysis be evaluated under drought of record conditions (a static and random event), socioeconomic impact analysis developed by the TWDB for the state water plan is based on assumptions of Scenario 1. Estimated impacts under scenario 1 are point estimates for years in which needs are reported (2010, 2020, 2030, 2040, 2050 and 2060). They are independent and distinct “what if” scenarios for a particular year and shortages are assumed to be temporary events resulting from drought of record conditions. Estimated impacts measure what would happen if water user groups experience water shortages for a period of one year.

The TWDB recognize that dynamic models may be more appropriate for some water user groups; however, combining approaches on a statewide basis poses several problems. For one, it would require a complex array of analyses and models, and might require developing supply and demand forecasts under “normal” climatic conditions as opposed to drought of record conditions. Equally important is the notion that combining the approaches would produce inconsistent results across regions resulting in a so-called “apples to oranges” comparison.

A variety tools are available to estimate economic impacts, but by far, the most widely used today are input-output models (IO models) combined with social accounting matrices (SAMs). Referred to as IO/SAM models, these tools formed the basis for estimating economic impacts for agriculture (irrigation and livestock water uses) and industry (manufacturing, mining, steam-electric and commercial business activity for municipal water uses).

Since the planning horizon extends through 2060, economic variables in the baseline are adjusted in accordance with projected changes in demographic and economic activity. Growth rates for municipal water use sectors (i.e., commercial, residential and institutional) are based on TWDB population forecasts. Future values for manufacturing, agriculture, and mining and steam-electric activity are based on the same underlying economic forecasts used to estimate future water use for each category.

The following steps outline the overall process.

Step 1: Generate IO/SAM Models and Develop Economic Baseline

IO/SAM models were estimated using propriety software known as IMPLAN PROTM (Impact for Planning Analysis). IMPLAN is a modeling system originally developed by the U.S. Forestry Service in the late 1970s. Today, the Minnesota IMPLAN Group (MIG Inc.) owns the copyright and distributes data and software. It is probably the most widely used economic impact model in existence. IMPLAN comes with databases containing the most recently available economic data from a variety of sources.¹ Using IMPLAN software and data, transaction tables conceptually similar to the one discussed previously were estimated for each county in the region and for the region as a whole. Each transaction table contains 528 economic sectors and allows one to estimate a variety of economic statistics including:

- **total sales** - total production measured by sales revenues;
- **intermediate sales** - sales to other businesses and industries within a given region;
- **final sales** – sales to end users in a region and exports out of a region;
- **employment** - number of full and part-time jobs (annual average) required by a given industry including self-employment;
- **regional income** - total payroll costs (wages and salaries plus benefits) paid by industries, corporate income, rental income and interest payments; and
- **business taxes** - sales, excise, fees, licenses and other taxes paid during normal operation of an industry (does not include income taxes).

TWDB analysts developed an economic baseline containing each of the above variables using year 2000 data. Since the planning horizon extends through 2060, economic variables in the baseline were allowed to change in accordance with projected changes in demographic and economic activity. Growth rates for municipal water use sectors (i.e., commercial, residential and institutional) are based on TWDB population forecasts. Projections for manufacturing, agriculture, and mining and steam-electric activity are based on the same underlying economic forecasts used to estimate future water use for each category. Monetary impacts in future years are reported in constant year 2006 dollars.

It is important to stress that employment, income and business taxes are the most useful variables when comparing the relative contribution of an economic sector to a regional economy. Total sales as reported in IO/SAM models are less desirable and can be misleading because they include sales to other industries in the region for use in the production of other goods. For example, if a mill buys grain from local farmers and uses it to produce feed, sales of both the processed feed and raw corn are counted

¹The IMPLAN database consists of national level technology matrices based on benchmark input-output accounts generated by the U.S. Bureau of Economic Analysis and estimates of final demand, final payments, industry output and employment for various economic sectors. IMPLAN regional data (i.e. states, a counties or groups of counties within a state) are divided into two basic categories: 1) data on an industry basis including value-added, output and employment, and 2) data on a commodity basis including final demands and institutional sales. State-level data are balanced to national totals using a matrix ratio allocation system and county data are balanced to state totals.

as “output” in an IO model. Thus, total sales double-count or overstate the true economic value of goods and services produced in an economy. They are not consistent with commonly used measures of output such as Gross National Product (GNP), which counts only final sales.

Another important distinction relates to terminology. Throughout this report, the term *sector* refers to economic subdivisions used in the IMPLAN database and resultant input-output models (528 individual sectors based on Standard Industrial Classification Codes). In contrast, the phrase *water use category* refers to water user groups employed in state and regional water planning including irrigation, livestock, mining, municipal, manufacturing and steam electric. Each IMPLAN sector was assigned to a specific water use category.

Step 2: Estimate Direct and Indirect Economic Impacts of Water Needs

Direct impacts are reductions in output by sectors experiencing water shortages. For example, without adequate cooling and process water a refinery would have to curtail or cease operation, car washes may close, or farmers may not be able to irrigate and sales revenues fall. Indirect impacts involve changes in inter-industry transactions as supplying industries respond to decreased demands for their services, and how seemingly non-related businesses are affected by decreased incomes and spending due to direct impacts. For example, if a farmer ceases operations due to a lack of irrigation water, they would likely reduce expenditures on supplies such as fertilizer, labor and equipment, and businesses that provide these goods would suffer as well.

Direct impacts accrue to immediate businesses and industries that rely on water and without water industrial processes could suffer. However, output responses may vary depending upon the severity of shortages. A small shortage relative to total water use would likely have a minimal impact, but large shortages could be critical. For example, farmers facing small shortages might fallow marginally productive acreage to save water for more valuable crops. Livestock producers might employ emergency culling strategies, or they may consider hauling water by truck to fill stock tanks. In the case of manufacturing, a good example occurred in the summer of 1999 when Toyota Motor Manufacturing experienced water shortages at a facility near Georgetown, Kentucky.² As water levels in the Kentucky River fell to historic lows due to drought, plant managers sought ways to curtail water use such as reducing rinse operations to a bare minimum and recycling water by funneling it from paint shops to boilers. They even considered trucking in water at a cost of 10 times what they were paying. Fortunately, rains at the end of the summer restored river levels, and Toyota managed to implement cutbacks without affecting production, but it was a close call. If rains had not replenished the river, shortages could have severely reduced output.³

To account for uncertainty regarding the relative magnitude of impacts to farm and business operations, the following analysis employs the concept of elasticity. Elasticity is a number that shows how a change in one variable will affect another. In this case, it measures the relationship between a percentage reduction in water availability and a percentage reduction in output. For example, an elasticity of 1.0 indicates that a 1.0 percent reduction in water availability would result in a 1.0 percent reduction in

² Royal, W. “High And Dry - Industrial Centers Face Water Shortages.” in *Industry Week*, Sept, 2000.

³ The efforts described above are not planned programmatic or long-term operational changes. They are emergency measures that individuals might pursue to alleviate what they consider a temporary condition. Thus, they are not characteristic of long-term management strategies designed to ensure more dependable water supplies such as capital investments in conservation technology or development of new water supplies.

economic output. An elasticity of 0.50 would indicate that for every 1.0 percent of unavailable water, output is reduced by 0.50 percent and so on. Output elasticities used in this study are:⁴

- if water needs are 0 to 5 percent of total water demand, no corresponding reduction in output is assumed;
- if water needs are 5 to 30 percent of total water demand, for each additional one percent of water need that is not met, there is a corresponding 0.50 percent reduction in output;
- if water needs are 30 to 50 percent of total water demand, for each additional one percent of water need that is not met, there is a corresponding 0.75 percent reduction in output; and
- if water needs are greater than 50 percent of total water demand, for each additional one percent of water need that is not met, there is a corresponding 1.0 percent (i.e., a proportional reduction).

In some cases, elasticities are adjusted depending upon conditions specific to a given water user group.

Once output responses to water shortages were estimated, direct impacts to total sales, employment, regional income and business taxes were derived using regional level economic multipliers estimating using IO/SAM models. The formula for a given IMPLAN sector is:

$$D_{i,t} = Q_{i,t} * S_{i,t} * E_Q * RFD_i * DM_{i(Q,L,I,T)}$$

where:

$D_{i,t}$ = direct economic impact to sector i in period t

$Q_{i,t}$ = total sales for sector i in period t in an affected county

RFD_i = ratio of final demand to total sales for sector i for a given region

$S_{i,t}$ = water shortage as percentage of total water use in period t

E_Q = elasticity of output and water use

$DM_{i(Q,L,I,T)}$ = direct output multiplier coefficients for labor (L), income (I) and taxes (T) for sector i .

Secondary impacts were derived using the same formula used to estimate direct impacts; however, indirect multiplier coefficients are used. Methods and assumptions specific to each water use sector are discussed in Sections 1.1.2 through 1.1.4.

⁴ Elasticities are based on one of the few empirical studies that analyze potential relationships between economic output and water shortages in the United States. The study, conducted in California, showed that a significant number of industries would suffer reduced output during water shortages. Using a survey based approach researchers posed two scenarios to different industries. In the first scenario, they asked how a 15 percent cutback in water supply lasting one year would affect operations. In the second scenario, they asked how a 30 percent reduction lasting one year would affect plant operations. In the case of a 15 percent shortage, reported output elasticities ranged from 0.00 to 0.76 with an average value of 0.25. For a 30 percent shortage, elasticities ranged from 0.00 to 1.39 with average of 0.47. For further information, see, California Urban Water Agencies, "Cost of Industrial Water Shortages," Spectrum Economics, Inc. November, 1991.

General Assumptions and Clarification of the Methodology

As with any attempt to measure and quantify human activities at a societal level, assumptions are necessary and every model has limitations. Assumptions are needed to maintain a level of generality and simplicity such that models can be applied on several geographic levels and across different economic sectors. In terms of the general approach used here several clarifications and cautions are warranted:

1. Shortages as reported by regional planning groups are the starting point for socioeconomic analyses.
2. Estimated impacts are point estimates for years in which needs are reported (i.e., 2010, 2020, 2030, 2040, 2050 and 2060). They are independent and distinct “what if” scenarios for each particular year and water shortages are assumed to be temporary events resulting from severe drought conditions combined with infrastructure limitations. In other words, growth occurs and future shocks are imposed on an economy at 10-year intervals and resultant impacts are measured. Given that reported figures are not cumulative in nature, it is inappropriate to sum impacts over the entire planning horizon. Doing so, would imply that the analysis predicts that drought of record conditions will occur every ten years in the future, which is not the case. Similarly, authors of this report recognize that in many communities needs are driven by population growth, and in the future total population will exceed the amount of water available due to infrastructure limitations, regardless of whether or not there is a drought. This implies that infrastructure limitations would constrain economic growth. However, since needs as defined by planning rules are based upon water supply and demand under the assumption of drought of record conditions, it is improper to conduct economic analysis that focuses on growth related impacts over the planning horizon. Figures generated from such an analysis would presume a 50-year drought of record, which is unrealistic. Estimating lost economic activity related to constraints on population and commercial growth due to lack of water would require developing water supply and demand forecasts under “normal” or “most likely” future climatic conditions.
3. While useful for planning purposes, this study is not a benefit-cost analysis. Benefit cost analysis is a tool widely used to evaluate the economic feasibility of specific policies or projects as opposed to estimating economic impacts of unmet water needs. Nevertheless, one could include some impacts measured in this study as part of a benefit cost study if done so properly. Since this is not a benefit cost analysis, future impacts are not weighted differently. In other words, estimates are not discounted. If used as a measure of economic benefits, one should incorporate a measure of uncertainty into the analysis. In this type of analysis, a typical method of discounting future values is to assign probabilities of the drought of record recurring again in a given year, and weight monetary impacts accordingly. This analysis assumes a probability of one.
4. IO multipliers measure the strength of backward linkages to supporting industries (i.e., those who sell inputs to an affected sector). However, multipliers say nothing about forward linkages consisting of businesses that purchase goods from an affected sector for further processing. For example, ranchers in many areas sell most of their animals to local meat packers who process animals into a form that consumers ultimately see in grocery stores and restaurants. Multipliers do not capture forward linkages to meat packers, and since meat packers sell livestock purchased from ranchers as “final sales,” multipliers for the ranching sector do not fully account for all losses to a region’s economy. Thus, as mentioned previously, in some cases closely linked sectors were moved from one water use category to another.
5. Cautions regarding interpretations of direct and secondary impacts are warranted. IO/SAM multipliers are based on “fixed-proportion production functions,” which basically means that input use - including labor - moves in lockstep fashion with changes in levels of output. In a

scenario where output (i.e., sales) declines, losses in the immediate sector or supporting sectors could be much less than predicted by an IO/SAM model for several reasons. For one, businesses will likely expect to continue operating so they might maintain spending on inputs for future use; or they may be under contractual obligations to purchase inputs for an extended period regardless of external conditions. Also, employers may not lay-off workers given that experienced labor is sometimes scarce and skilled personnel may not be readily available when water shortages subside. Lastly people who lose jobs might find other employment in the region. As a result, direct losses for employment and secondary losses in sales and employment should be considered an upper bound. Similarly, since projected population losses are based on reduced employment in the region, they should be considered an upper bound as well.

6. IO models are static. Models and resultant multipliers are based upon the structure of the U.S. and regional economies in 2006. In contrast, water shortages are projected to occur well into the future. Thus, the analysis assumes that the general structure of the economy remains the same over the planning horizon, and the farther out into the future we go, this assumption becomes less reliable.
7. Impacts are annual estimates. If one were to assume that conditions persisted for more than one year, figures should be adjusted to reflect the extended duration. The drought of record in most regions of Texas lasted several years.
8. Monetary figures are reported in constant year 2006 dollars.

1.1.2 Impacts to Agriculture

Irrigated Crop Production

The first step in estimating impacts to irrigation required calculating gross sales for IMPLAN crop sectors. Default IMPLAN data do not distinguish irrigated production from dry-land production. Once gross sales were known other statistics such as employment and income were derived using IMPLAN direct multiplier coefficients. Gross sales for a given crop are based on two data sources:

- 1) county-level statistics collected and maintained by the TWDB and the USDA Farm Services Agency (FSA) including the number of irrigated acres by crop type and water application per acre, and
- 2) regional-level data published by the Texas Agricultural Statistics Service (TASS) including prices received for crops (marketing year averages), crop yields and crop acreages.

Crop categories used by the TWDB differ from those used in IMPLAN datasets. To maintain consistency, sales and other statistics are reported using IMPLAN crop classifications. Table 1 shows the TWDB crops included in corresponding IMPLAN sectors, and Table 2 summarizes acreage and estimated annual water use for each crop classification (five-year average from 2003-2007). As shown in Table 2, the overwhelming majority of irrigation in Region H is for rice. Thus, in our analysis we disregard other crop types. Table 3 displays average (2003-2007) gross revenues per acre for rice production applied in the analysis.

Table 1: Crop Classifications Used in TWDB Water Use Survey and Corresponding IMPLAN Crop Sectors

IMPLAN Category	TWDB Category
Oilseeds	Soybeans and "other oil crops"
Grains	Grain sorghum, corn, wheat and "other grain crops"
Vegetable and melons	"Vegetables" and potatoes
Tree nuts	Pecans
Fruits	Citrus, vineyard and other orchard
Cotton	Cotton
Sugarcane and sugar beets	Sugarcane and sugar beets
All "other" crops	"Forage crops", peanuts, alfalfa, hay and pasture, rice and "all other crops"

Table 2: Summary of Irrigated Crop Acreage and Water Demand for the Region H Regional Water Planning Area (average 2003-2007)

Sector	Acres (1000s)	Distribution of Acres	Water Use (1000s of AF)	Distribution of Water Use
Oilseeds	1.0	2%	<1	<1%
Grains	<1	<1%	<1	<1%
Vegetable and melons	<1	<1%	<1	<1%
Tree nuts	<1	<1%	<1	<1%
Fruits	<1	<1%	<1	<1%
Cotton	0	0%	0	0%
Sugarcane and sugar beets	0	0%	0	0%
Rice	53	97%	291	99%
Total	55	100%	292	100%

Source: Water demand figures are a 5- year average (2003-2007) of the TWDB's annual Irrigation Water Use Estimates. Statistics for irrigated crop acreage are based upon annual survey data collected by the TWDB and the Farm Service Agency. Values do not include acreage or water use for the TWDB categories classified by the Farm Services Agency as "failed acres," "golf course" or "waste water."

Table 3: Average Gross Sales Revenues per Acre for Irrigated Crops for the Region H Regional Water Planning Area (2003-2007)		
IMPLAN Sector	Gross Revenues per Acre	Crops Included in Estimates
All Other Crops	\$570	Based on five-year (2003-2007) average weighted by acreage for "rice."
*Figures are rounded. Source: Based on data from the Texas Agricultural Statistics Service, Texas Water Development Board, and Texas A&M University.		

The following steps outline the overall process used to estimate direct impacts to irrigated agriculture:

1. *Distribute shortages across predominant crop types in the region.* Again, unmet water needs were distributed equally across crop sectors that constitute one percent or more of irrigated acreage.
2. *Estimate associated reductions in output for affected crop sectors.* Output reductions are based on elasticities discussed previously and on estimated values per acre for different crops. Values per acre stem from the same data used to estimate output for the year 2006 baseline. Using multipliers, we then generate estimates of forgone income, jobs, and tax revenues based on reductions in gross sales and final demand.
3. *Reduce sales revenues for forward processors in proportion to lost rice production.* As discussed in Section 1.1, input output models capture indirect losses to suppliers and other businesses that depend upon rice farming, but only those providing inputs to rice production. Multipliers do not capture potential impacts to forward processors, in this case rice mills, which add considerable value to the product and hence income and jobs to the state. For example, Texas rice farming directly generates about \$60 to \$80 in gross state product. Once the rice harvested it is sold to rice mills that process and resell the crop. This added value generates an additional \$60 to \$80 million in direct gross state product. Impacts measured in the study capture this additional value added.

Livestock

The approach used for the livestock sector is basically the same as that used for crop production. As is the case with crops, livestock categorizations used by the TWDB differ from those used in IMPLAN datasets, and TWDB groupings were assigned to a given IMPLAN sector (Table 4). Then we:

- 1) *Distribute projected water needs equally among predominant livestock sectors and estimate lost output:* As is the case with irrigation, shortages are assumed to affect all livestock sectors equally; however, the category of "other" is not included given its small size. If water needs were

small relative to total demands, we assume that producers would haul in water by truck to fill stock tanks. The cost per acre-foot (\$24,000) is based on 2008 rates charged by various water haulers in Texas, and assumes that the average truck load is 6,500 gallons at a hauling distance of 60 miles.

3) *Estimate reduced output in forward processors for livestock sectors.* Reductions in output for livestock sectors are assumed to have a proportional impact on forward processors in the region such as meat packers. In other words, if the cows were gone, meat-packing plants or fluid milk manufacturers) would likely have little to process. This is not an unreasonable premise. Since the 1950s, there has been a major trend towards specialized cattle feedlots, which in turn has decentralized cattle purchasing from livestock terminal markets to direct sales between producers and slaughterhouses. Today, the meat packing industry often operates large processing facilities near high concentrations of feedlots to increase capacity utilization.⁵ As a result, packers are heavily dependent upon nearby feedlots. For example, a recent study by the USDA shows that on average meat packers obtain 64 percent of cattle from within 75 miles of their plant, 82 percent from within 150 miles and 92 percent from within 250 miles.⁶

Table 4: Description of Livestock Sectors	
IMPLAN Category	TWDB Category
Cattle ranching	Cattle, cow calf, feedlots and dairies
Poultry and egg production	Poultry production.
Other livestock	Livestock other than cattle and poultry (i.e., horses, goats, sheep, hogs)
Milk manufacturing	Fluid milk manufacturing, cheese manufacturing, ice cream manufacturing etc.
Meat packing	Meat processing present in the region from slaughter to final processing

1.1.3 Impacts to Municipal Water User Groups

Disaggregation of Municipal Water Demands

Estimating the economic impacts for the municipal water user groups is complicated for a number of reasons. For one, municipal use comprises a range of consumers including commercial businesses, institutions such as schools and government and households. However, reported water needs are not distributed among different municipal water users. In other words, how much of a municipal need is commercial and how much is residential (domestic)?

⁵ Ferreira, W.N. "Analysis of the Meat Processing Industry in the United States." Clemson University Extension Economics Report ER211, January 2003.

⁶ Ward, C.E. "Summary of Results from USDA's Meatpacking Concentration Study." Oklahoma Cooperative Extension Service, OSU Extension Facts WF-562.

The amount of commercial water use as a percentage of total municipal demand was estimated based on “GED” coefficients (gallons per employee per day) published in secondary sources.⁷ For example, if year 2006 baseline data for a given economic sector (e.g., amusement and recreation services) shows employment at 30 jobs and the GED coefficient is 200, then average daily water use by that sector is (30 x 200 = 6,000 gallons) or 6.7 acre-feet per year. Water not attributed to commercial use is considered domestic, which includes single and multi-family residential consumption, institutional uses and all use designated as “county-other.” Based on our analysis, commercial water use is about 5 to 35 percent of municipal demand. Less populated rural counties occupy the lower end of the spectrum, while larger metropolitan counties are at the higher end.

After determining the distribution of domestic versus commercial water use, we developed methods for estimating impacts to the two groups.

Domestic Water Uses

Input output models are not well suited for measuring impacts of shortages for domestic water uses, which make up the majority of the municipal water use category. To estimate impacts associated with domestic water uses, municipal water demand and needs are subdivided into residential, and commercial and institutional use. Shortages associated with residential water uses are valued by estimating proxy demand functions for different water user groups allowing us to estimate the marginal value of water, which would vary depending upon the level of water shortages. The more severe the water shortage, the more costly it becomes. For instance, a 2 acre-foot shortage for a group of households that use 10 acre-feet per year would not be as severe as a shortage that amounted to 8 acre-feet. In the case of a 2 acre-foot shortage, households would probably have to eliminate some or all outdoor water use, which could have implicit and explicit economic costs including losses to the horticultural and landscaping industry. In the case of an 8 acre-foot shortage, people would have to forgo all outdoor water use and most indoor water consumption. Economic impacts would be much higher in the latter case because people, and would be forced to find emergency alternatives assuming alternatives were available.

To estimate the value of domestic water uses, TWDB staff developed marginal loss functions based on constant elasticity demand curves. This is a standard and well-established method used by economists to value resources such as water that have an explicit monetary cost.

A constant price elasticity of demand is estimated using a standard equation:

$$w = kc^{(-\epsilon)}$$

where:

- w is equal to average monthly residential water use for a given water user group measured in thousands of gallons;
- k is a constant intercept;

⁷ Sources for GED coefficients include: Gleick, P.H., Haasz, D., Henges-Jeck, C., Srinivasan, V., Wolff, G. Cushing, K.K., and Mann, A. "Waste Not, Want Not: The Potential for Urban Water Conservation in California." Pacific Institute. November 2003. U.S. Bureau of the Census. 1982 Census of Manufacturers: Water Use in Manufacturing. USGPO, Washington D.C. See also: "U.S. Army Engineer Institute for Water Resources, IWR Report 88-R-6.," Fort Belvoir, VA. See also, Joseph, E. S., 1982, "Municipal and Industrial Water Demands of the Western United States." Journal of the Water Resources Planning and Management Division, Proceedings of the American Society of Civil Engineers, v. 108, no. WR2, p. 204-216. See also, Baumann, D. D., Boland, J. J., and Sims, J. H., 1981, "Evaluation of Water Conservation for Municipal and Industrial Water Supply." U.S. Army Corps of Engineers, Institute for Water Resources, Contract no. 82-C1.

- c is the average cost of water per 1,000 gallons; and
- ϵ is the price elasticity of demand.

Price elasticities (-0.30 for indoor water use and -0.50 for outdoor use) are based on a study by Bell et al.⁸ that surveyed 1,400 water utilities in Texas that serve at least 1,000 people to estimate demand elasticity for several variables including price, income, weather etc. Costs of water and average use per month per household are based on data from the Texas Municipal League's annual water and wastewater rate surveys - specifically average monthly household expenditures on water and wastewater in different communities across the state. After examining variance in costs and usage, three different categories of water user groups based on population (population less than 5,000, cities with populations ranging from 5,000 to 99,999 and cities with populations exceeding 100,000) were selected to serve as proxy values for municipal water groups that meet the criteria (Table 5).⁹

Table 5: Water Use and Costs Parameters Used to Estimated Water Demand Functions (average monthly costs per acre-foot for delivered water and average monthly use per household)				
Community Population	Water	Wastewater	Total Monthly Cost	Avg. Monthly Use (gallons)
Less than or equal to 5,000	\$1,335	\$1,228	\$2,563	6,204
5,000 to 100,000	\$1,047	\$1,162	\$2,209	7,950
Great than or equal to 100,000	\$718	\$457	\$1,190	8,409
Source: Based on annual water and wastewater rate surveys published by the Texas Municipal League.				

As an example, Table 6 shows the economic impact per acre-foot of domestic water needs for municipal water user groups with population exceeding 100,000 people. There are several important assumptions incorporated in the calculations:

- 1) Reported values are net of the variable costs of treatment and distribution such as expenses for chemicals and electricity since using less water involves some savings to consumers and utilities alike; and for outdoor uses we do not include any value for wastewater.
- 2) Outdoor and “non-essential” water uses would be eliminated before indoor water consumption was affected, which is logical because most water utilities in Texas have drought contingency plans that generally specify curtailment or elimination of outdoor water use during droughts.¹⁰ Determining how much water is used for outdoor purposes

⁸ Bell, D.R. and Griffin, R.C. “Community Water Demand in Texas as a Century is Turned.” Research contract report prepared for the Texas Water Development Board. May 2006.

⁹ Ideally, one would want to estimate demand functions for each individual utility in the state. However, this would require an enormous amount of time and resources. For planning purposes, we believe the values generated from aggregate data are more than sufficient.

¹⁰ In Texas, state law requires retail and wholesale water providers to prepare and submit plans to the Texas Commission on Environmental Quality (TCEQ). Plans must specify demand management measures for use during drought including curtailment of

is based on several secondary sources. The first is a major study sponsored by the American Water Works Association, which surveyed cities in states including Colorado, Oregon, Washington, California, Florida and Arizona. On average across all cities surveyed 58 percent of single family residential water use was for outdoor activities. In cities with climates comparable to large metropolitan areas of Texas, the average was 40 percent.¹¹ Earlier findings of the U.S. Water Resources Council showed a national average of 33 percent. Similarly, the United States Environmental Protection Agency (USEPA) estimated that landscape watering accounts for 32 percent of total residential and commercial water use on annual basis.¹² A study conducted for the California Urban Water Agencies (CUWA) calculated average annual values ranging from 25 to 35 percent.¹³ Unfortunately, there does not appear to be any comprehensive research that has estimated non-agricultural outdoor water use in Texas. As an approximation, an average annual value of 30 percent based on the above references was selected to serve as a rough estimate in this study.

3) As shortages approach 100 percent values become immense and theoretically infinite at 100 percent because at that point death would result, and willingness to pay for water is immeasurable. Thus, as shortages approach 80 percent of monthly consumption, we assume that households and non-water intensive commercial businesses (those that use water only for drinking and sanitation would have water delivered by tanker truck or commercial water delivery companies. Based on reports from water companies throughout the state, we estimate that the cost of trucking in water is around \$21,000 to \$27,000 per acre-feet assuming a hauling distance of between 20 to 60 miles. This is not an unreasonable assumption. The practice was widespread during the 1950s drought and recently during droughts in this decade. For example, in 2000 at the heels of three consecutive drought years Electra - a small town in North Texas - was down to its last 45 days worth of reservoir water when rain replenished the lake, and the city was able to refurbish old wells to provide supplemental groundwater. At the time, residents were forced to limit water use to 1,000 gallons per person per month - less than half of what most people use - and many were having water delivered to their homes by private contractors.¹⁴ In 2003 citizens of Ballinger, Texas, were also faced with a dwindling water supply due to prolonged drought. After three years of drought, Lake Ballinger, which supplies water to more than 4,300 residents in Ballinger and to 600 residents in nearby Rowena, was almost dry. Each day, people lined up to get water from a well in nearby City Park. Trucks hauling trailers outfitted with large plastic and metal tanks hauled water to and from City Park to Ballinger.¹⁵

"non-essential water uses." Non-essential uses include, but are not limited to, landscape irrigation and water for swimming pools or fountains. For further information see the Texas Environmental Quality Code §288.20.

¹¹ See, Mayer, P.W., DeOreo, W.B., Opitz, E.M., Kiefer, J.C., Davis, W., Dziegielewski, D., Nelson, J.O. "Residential End Uses of Water." Research sponsored by the American Water Works Association and completed by Aquacraft, Inc. and Planning and Management Consultants, Ltd. (PMCL@CDM).

¹² U.S. Environmental Protection Agency. "Cleaner Water through Conservation." USEPA Report no. 841-B-95-002. April, 1995.

¹³ Planning and Management Consultants, Ltd. "Evaluating Urban Water Conservation Programs: A Procedures Manual." Prepared for the California Urban Water Agencies. February 1992.

¹⁴ Zewe, C. "Tap Threatens to Run Dry in Texas Town." July 11, 2000. CNN Cable News Network.

¹⁵ Associated Press, "Ballinger Scrambles to Finish Pipeline before Lake Dries Up." May 19, 2003.

Table 6: Economic Losses Associated with Domestic Water Shortages in Communities with Populations Exceeding 100,000 people

Water shortages as a percentage of total monthly household demands	No. of gallons remaining per household per day	No of gallons remaining per person per day	Economic loss (per acre-foot)	Economic loss (per gallon)
1%	278	93	\$748	\$0.00005
5%	266	89	\$812	\$0.0002
10%	252	84	\$900	\$0.0005
15%	238	79	\$999	\$0.0008
20%	224	75	\$1,110	\$0.0012
25%	210	70	\$1,235	\$0.0015
30% ^a	196	65	\$1,699	\$0.0020
35%	182	61	\$3,825	\$0.0085
40%	168	56	\$4,181	\$0.0096
45%	154	51	\$4,603	\$0.011
50%	140	47	\$5,109	\$0.012
55%	126	42	\$5,727	\$0.014
60%	112	37	\$6,500	\$0.017
65%	98	33	\$7,493	\$0.02
70%	84	28	\$8,818	\$0.02
75%	70	23	\$10,672	\$0.03
80%	56	19	\$13,454	\$0.04
85%	42	14	\$18,091 (\$24,000) ^b	\$0.05 (\$0.07) ^b
90%	28	9	\$27,363 (\$24,000)	\$0.08 (\$0.07)
95%	14	5	\$55,182 (\$24,000)	\$0.17 (\$0.07)
99%	3	0.9	\$277,728 (\$24,000)	\$0.85 (\$0.07)
99.9%	1	0.5	\$2,781,377 (\$24,000)	\$8.53 (\$0.07)
100%	0	0	Infinite (\$24,000)	Infinite (\$0.07)

^a The first 30 percent of needs are assumed to be restrictions of outdoor water use; when needs reach 30 percent of total demands all outdoor water uses would be restricted. Needs greater than 30 percent include indoor use.

^b As shortages approach 100 percent the value approaches infinity assuming there are not alternatives available; however, we assume that communities would begin to have water delivered by tanker truck at an estimated cost of \$24,000 per acre-foot when shortages breached 85 percent.

Commercial Businesses

Effects of water shortages on commercial sectors were estimated in a fashion similar to other business sectors meaning that water shortages would affect the ability of these businesses to operate. This is particularly true for “water intensive” commercial sectors that need large amounts of water (in addition to potable and sanitary water) to provide their services. These include:

- car-washes,
- laundry and cleaning facilities,
- sports and recreation clubs and facilities including race tracks,
- amusement and recreation services,
- hospitals and medical facilities,
- hotels and lodging places, and
- eating and drinking establishments.

A key assumption is that commercial operations would not be affected until water shortages were at least 50 percent of total municipal demand. In other words, we assume that residential water consumers would reduce water use including all non-essential uses before businesses were affected.

An example will illustrate the breakdown of municipal water needs and the overall approach to estimating impacts of municipal needs. Assume City A experiences an unexpected shortage of 50 acre-feet per year when their demands are 200 acre-feet per year. Thus, shortages are only 25 percent of total municipal use and residents of City A could eliminate needs by restricting landscape irrigation. City B, on the other hand, has a deficit of 150 acre-feet in 2020 and a projected demand of 200 acre-feet. Thus, total shortages are 75 percent of total demand. Emergency outdoor and some indoor conservation measures could eliminate 50 acre-feet of projected needs, yet 50 acre-feet would still remain. To eliminate” the remaining 50 acre-feet water intensive commercial businesses would have to curtail operations or shut down completely.

Three other areas were considered when analyzing municipal water shortages: 1) lost revenues to water utilities, 2) losses to the horticultural and landscaping industries stemming from reduction in water available for landscape irrigation, and 3) lost revenues and related economic impacts associated with reduced water related recreation.

Water Utility Revenues

Estimating lost water utility revenues was straightforward. We relied on annual data from the “*Water and Wastewater Rate Survey*” published annually by the Texas Municipal League to calculate an average value per acre-foot for water and sewer. For water revenues, average retail water and sewer rates multiplied by total water needs served as a proxy. For lost wastewater, total unmet needs were adjusted for return flow factor of 0.60 and multiplied by average sewer rates for the region. Needs reported as “county-other” were excluded under the presumption that these consist primarily of self-supplied water uses. In addition, 15 percent of water demand and needs are considered non-billed or “unaccountable” water that comprises things such as leakages and water for municipal government functions (e.g., fire departments). Lost tax receipts are based on current rates for the “miscellaneous gross receipts tax,” which the state collects from utilities located in most incorporated cities or towns in Texas. We do not include lost water utility revenues when aggregating impacts of municipal water shortages to regional and state levels to prevent double counting.

Horticultural and Landscaping Industry

The horticultural and landscaping industry, also referred to as the “green Industry,” consists of businesses that produce, distribute and provide services associated with ornamental plants, landscape and garden supplies and equipment. Horticultural industries often face big losses during drought. For example, the recent drought in the Southeast affecting the Carolinas and Georgia horticultural and landscaping businesses had a harsh year. Plant sales were down, plant mortality increased, and watering costs increased. Many businesses were forced to close locations, lay off employees, and even file for bankruptcy. University of Georgia economists put statewide losses for the industry at around \$3.2 billion during the 3-year drought that ended in 2008.¹⁶ Municipal restrictions on outdoor watering play a significant role. During drought, water restrictions coupled with persistent heat has a psychological effect on homeowners that reduces demands for landscaping products and services. Simply put, people were afraid to spend any money on new plants and landscaping.

In Texas, there do not appear to be readily available studies that analyze the economic effects of water shortages on the industry. However, authors of this report believe negative impacts do and would result in restricting landscape irrigation to municipal water consumers. The difficulty in measuring them is two-fold. First, as noted above, data and research for these types of impacts that focus on Texas are limited; and second, economic data provided by IMPLAN do not disaggregate different sectors of the green industry to a level that would allow for meaningful and defensible analysis.¹⁷

Recreational Impacts

Recreational businesses often suffer when water levels and flows in rivers, springs and reservoirs fall significantly during drought. During droughts, many boat docks and lake beaches are forced to close, leading to big losses for lakeside business owners and local communities. Communities adjacent to popular river and stream destinations such as Comal Springs and the Guadalupe River also see their business plummet when springs and rivers dry up. Although there are many examples of businesses that have suffered due to drought, dollar figures for drought-related losses to the recreation and tourism industry are not readily available, and very difficult to measure without extensive local surveys. Thus, while they are important, economic impacts are not measured in this study.

Table 7 summarizes impacts of municipal water shortages at differing levels of magnitude, and shows the ranges of economic costs or losses per acre-foot of shortage for each level.

¹⁶ Williams, D. “Georgia landscapers eye rebound from Southeast drought.” Atlanta Business Chronicle, Friday, June 19, 2009

¹⁷ Economic impact analyses prepared by the TWDB for 2006 regional water plans did include estimates for the horticultural industry. However, year 2000 and prior IMPLAN data were disaggregated to a finer level. In the current dataset (2006), the sector previously listed as “Landscaping and Horticultural Services” (IMPLAN Sector 27) is aggregated into “Services to Buildings and Dwellings” (IMPLAN Sector 458).

Table 7: Impacts of Municipal Water Shortages at Different Magnitudes of Shortages		
Water shortages as percent of total municipal demands	Impacts	Economic costs per acre-foot*
0-30%	<ul style="list-style-type: none"> ✓ Lost water utility revenues ✓ Restricted landscape irrigation and non-essential water uses 	\$730 - \$2,040
30-50%	<ul style="list-style-type: none"> ✓ Lost water utility revenues ✓ Elimination of landscape irrigation and non-essential water uses ✓ Rationing of indoor use 	\$2,040 - \$10,970
>50%	<ul style="list-style-type: none"> ✓ Lost water utility revenues ✓ Elimination of landscape irrigation and non-essential water uses ✓ Rationing of indoor use ✓ Restriction or elimination of commercial water use ✓ Importing water by tanker truck 	\$10,970 - varies
*Figures are rounded		

1.1.4 Industrial Water User Groups

Manufacturing

Impacts to manufacturing were estimated by distributing water shortages among industrial sectors at the county level. For example, if a planning group estimates that during a drought of record water supplies in County A would only meet 50 percent of total annual demands for manufactures in the county, we reduced output for each sector by 50 percent. Since projected manufacturing demands are based on TWDB Water Uses Survey data for each county, we only include IMPLAN sectors represented in the TWDB survey database. Some sectors in IMPLAN databases are not part of the TWDB database given that they use relatively small amounts of water - primarily for on-site sanitation and potable purposes. To maintain consistency between IMPLAN and TWDB databases, Standard Industrial Classification (SIC) codes both databases were cross referenced in county with shortages. Non-matches were excluded when calculating direct impacts.

Mining

The process of mining is very similar to that of manufacturing. We assume that within a given county, shortages would apply equally to relevant mining sectors, and IMPLAN sectors are cross referenced with TWDB data to ensure consistency.

In Texas, oil and gas extraction and sand and gravel (aggregates) operations are the primary mining industries that rely on large volumes of water. For sand and gravel, estimated output reductions are straightforward; however, oil and gas is more complicated for a number of reasons. IMPLAN does not necessarily report the physical extraction of minerals by geographic local, but rather the sales revenues reported by a particular corporation.

For example, at the state level revenues for IMPLAN sector 19 (oil and gas extraction) and sector 27 (drilling oil and gas wells) totals \$257 billion. Of this, nearly \$85 billion is attributed to Harris County. However, only a very small fraction (less than one percent) of actual production takes place in the county. To measure actual potential losses in well head capacity due to water shortages, we relied on county level production data from the Texas Railroad Commission (TRC) and average well-head market prices for crude and gas to estimate lost revenues in a given county. After which, we used to IMPLAN ratios to estimate resultant losses in income and employment.

Other considerations with respect to mining include:

- 1) Petroleum and gas extraction industry only uses water in significant amounts for secondary recovery. Known in the industry as enhanced or water flood extraction, secondary recovery involves pumping water down injection wells to increase underground pressure thereby pushing oil or gas into other wells. IMPLAN output numbers do not distinguish between secondary and non-secondary recovery. To account for the discrepancy, county-level TRC data that show the proportion of barrels produced using secondary methods were used to adjust IMPLAN data to reflect only the portion of sales attributed to secondary recovery.
- 2) A substantial portion of output from mining operations goes directly to businesses that are classified as manufacturing in our schema. Thus, multipliers measuring backward linkages for a given manufacturer might include impacts to a supplying mining operation. Care was taken not to double count in such situations if both a mining operation and a manufacturer were reported as having water shortages.

Steam-electric

At minimum without adequate cooling water, power plants cannot safely operate. As water availability falls below projected demands, water levels in lakes and rivers that provide cooling water would also decline. Low water levels could affect raw water intakes and outfalls at electrical generating units in several ways. For one, power plants are regulated by thermal emission guidelines that specify the maximum amount of heat that can go back into a river or lake via discharged cooling water. Low water levels could result in permit compliance issues due to reduced dilution and dispersion of heat and subsequent impacts on aquatic biota near outfalls.¹⁸ However, the primary concern would be a loss of head (i.e., pressure) over intake structures that would decrease flows through intake tunnels. This would affect safety related pumps, increase operating costs and/or result in sustained shut-downs. Assuming plants did shutdown, they would not be able to generate electricity.

¹⁸ Section 316 (b) of the Clean Water Act requires that thermal wastewater discharges do not harm fish and other wildlife.

Among all water use categories steam-electric is unique and cautions are needed when applying methods used in this study. Measured changes to an economy using input-output models stem directly from changes in sales revenues. In the case of water shortages, one assumes that businesses will suffer lost output if process water is in short supply. For power generation facilities this is true as well. However, the electric services sector in IMPLAN represents a corporate entity that may own and operate several electrical generating units in a given region. If one unit became inoperable due to water shortages, plants in other areas or generation facilities that do not rely heavily on water such as gas powered turbines might be able to compensate for lost generating capacity. Utilities could also offset lost production via purchases on the spot market.¹⁹ Thus, depending upon the severity of the shortages and conditions at a given electrical generating unit, energy supplies for local and regional communities could be maintained. But in general, without enough cooling water, utilities would have to throttle back plant operations, forcing them to buy or generate more costly power to meet customer demands.

Measuring impacts end users of electricity is not part of this study as it would require extensive local and regional level analysis of energy production and demand. To maintain consistency with other water user groups, impacts of steam-electric water shortages are measured in terms of lost revenues (and hence income) and jobs associated with shutting down electrical generating units.

1.2 Social Impacts of Water Shortages

As the name implies, the effects of water shortages can be social or economic. Distinctions between the two are both semantic and analytical in nature – more so analytic in the sense that social impacts are harder to quantify. Nevertheless, social effects associated with drought and water shortages are closely tied to economic impacts. For example, they might include:

- demographic effects such as changes in population,
- disruptions in institutional settings including activity in schools and government,
- conflicts between water users such as farmers and urban consumers,
- health-related low-flow problems (e.g., cross-connection contamination, diminished sewage flows, increased pollutant concentrations),
- mental and physical stress (e.g., anxiety, depression, domestic violence),
- public safety issues from forest and range fires and reduced fire fighting capability,
- increased disease caused by wildlife concentrations,
- loss of aesthetic and property values, and
- reduced recreational opportunities.²⁰

¹⁹ Today, most utilities participate in large interstate “power pools” and can buy or sell electricity “on the grid” from other utilities or power marketers. Thus, assuming power was available to buy, and assuming that no contractual or physical limitations were in place such as transmission constraints; utilities could offset lost power that resulted from waters shortages with purchases via the power grid.

²⁰ Based on information from the website of the National Drought Mitigation Center at the University of Nebraska Lincoln. Available online at: <http://www.drought.unl.edu/risk/impacts.htm>. See also, Vanclay, F. “*Social Impact Assessment.*” in Petts, J. (ed) *International Handbook of Environmental Impact Assessment.* 1999.

Social impacts measured in this study focus strictly on demographic effects including changes in population and school enrollment. Methods are based on demographic projection models developed by the Texas State Data Center and used by the TWDB for state and regional water planning. Basically, the social impact model uses results from the economic component of the study and assesses how changes in labor demand would affect migration patterns in a region. Declines in labor demand as measured using adjusted IMPLAN data are assumed to affect net economic migration in a given regional water planning area. Employment losses are adjusted to reflect the notion that some people would not relocate but would seek employment in the region and/or public assistance and wait for conditions to improve. Changes in school enrollment are simply the proportion of lost population between the ages of 5 and 17.

2. Results

Section 2 presents the results of the analysis at the regional level. Included are baseline economic data for each water use category, and estimated economics impacts of water shortages for water user groups with reported deficits. According to the 2011 *Region H Regional Water Plan*, during severe drought irrigation, municipal, manufacturing, mining and steam-electric water user groups would experience water shortages in the absence of new water management strategies.

2.1 Overview of Regional Economy

On an annual basis, the Region H economy generates slightly more than \$373 billion in gross state product for Texas (\$342 billion in income and \$31 billion in state and local business taxes) and supports 3,386,000 jobs (Table 8). Generating nearly \$79 billion worth of income per year manufacturing (particularly petrochemical refining) is the primary base economic sector in the region and state.²¹ Municipal sectors also generate substantial amounts of activity, nearly \$212 billion per year in gross state product, and are major employers in the region. While municipal sectors are the largest employer and source of wealth, many businesses that make up the municipal category such as restaurants and retail stores are non-basic industries meaning they exist to provide services to people who work would in base industries such as manufacturing, agriculture and mining. In other words, without base industries such as agriculture, many municipal jobs in the region would not exist.

²¹ Base industries are those that supply markets outside of a region. These industries are crucial to the local economy and are called the economic base of a region. Appendix A shows how IMPLAN's 529 sectors were allocated to water use category, and shows economic data for each sector.

Table 8: The Region H Economy by Water User Group (\$millions) ^a						
Water Use Category	Total sales	Intermediate sales	Final sales	Jobs	Income	Business taxes
Irrigation ^b	\$401.01	\$46.25	\$354.76	966	\$69.22	\$3.73
Livestock	\$1,812.22	\$772.84	\$1,039.38	15,033	\$210.98	\$17.29
Manufacturing	\$377,287.75	\$120,954.26	\$256,333.49	493,526	\$75,600.29	\$2,527.00
Mining	\$100,671.55	\$69,837.10	\$30,834.44	124,166	\$56,104.32	\$6,280.56
Steam-electric	\$25,548.42	\$7,187.34	\$18,361.09	12,412	\$17,800.89	\$2,967.22
Municipal	\$333,733.23	\$116,264.88	\$217,468.36	2,740,308	\$192,557.01	\$19,069.36
Regional total	\$839,461.58	\$315,061.19	\$524,048.55	3,386,006	\$342,302.00	\$30,862.53

^a Appendix 1 displays data for individual IMPLAN sectors that make up each water use category. Based on data from the Texas Water Development Board, and year 2006 data from the Minnesota IMPLAN Group, Inc.

^b Irrigation includes activity for both rice farms and rice mills.

2.2 Impacts of Agricultural Water Shortages

According to the 2011 *Region H Regional Water Plan*, during severe drought the counties of Brazoria, Chambers, Galveston, Liberty, and Waller would experience shortages of irrigation water without new management strategies. In 2010, shortages range from about 15 to 90 percent of annual irrigation demands. Shortages of these magnitudes would reduce gross state product (income plus state and local business taxes) by an estimated \$68 million in 2010 and \$61 million in 2060 with potential job losses ranging from 849 to 730. These figures include impacts to rice mills.

Table 9: Economic Impacts of Water Shortages for Irrigation Water User Groups (\$millions)			
Decade	Lost income from reduced rice production and milling activity ^a	Lost state and local tax revenues from reduced rice production and milling activity	Lost jobs from rice production and milling activity
2010	\$68.19	\$7.89	849
2020	\$62.37	\$7.22	769
2030	\$59.88	\$6.93	739
2040	\$58.65	\$6.79	722
2050	\$59.82	\$6.92	726
2060	\$61.15	\$7.08	730

^a Changes to Income and business taxes are collectively equivalent to a decrease in gross state product, which is analogous to gross domestic product measured at the state rather than national level. Appendix 2 shows results by water user group.

2.3 Impacts of Municipal Water Shortages

Water shortages are projected to occur in a significant number of communities in Region H. At the regional level, the estimated economic value of domestic water shortages totals \$97 million in 2010 and \$4,798 million in 2060 (Table 10). Municipal shortages would also restrict the operation of many commercial businesses reducing gross state product by an estimated \$30 million in 2010 and \$2,738 million in 2060.

Table 10: Economic Impacts of Water Shortages for Municipal Water User Groups (\$millions)					
Decade	Monetary value of domestic water shortages	Lost income from reduced commercial business activity*	Lost state and local taxes from reduced commercial business activity	Lost jobs from reduced commercial business activity	Lost water utility revenues
2010	\$96.95	\$26.40	\$3.57	813	\$78.89
2020	\$312.58	\$364.24	\$40.51	8,583	\$349.72
2030	\$847.63	\$1,297.19	\$143.13	30,419	\$535.20
2040	\$1,581.98	\$1,439.98	\$162.99	34,850	\$618.95
2050	\$2,948.37	\$2,089.60	\$226.17	48,039	\$726.54
2060	\$4,810.50	\$2,520.56	\$272.38	57,821	\$905.55

*Changes to Income and business taxes are collectively equivalent to a decrease in gross state product, which is analogous to gross domestic product measured at the state rather than national level. Appendix 2 shows results by water user group.

2.4 Impacts of Manufacturing Water Shortages

Manufacturing water shortages in the region are projected to occur in Brazoria, Chambers, Fort Bend, Harris, Leon, Liberty, Madison, Montgomery, San Jacinto, Walker, and Waller. The Region H planning group estimates that these manufacturers would be short nearly 75,000 acre-feet of water in 2010 and 253,000 acre-feet in 2060. Shortages of these magnitudes would reduce gross state product (income plus taxes) by an estimated \$2,939 million in 2010 and \$12,199 million in 2060 (Table 11).

Table 11: Economic Impacts of Water Shortages for Manufacturing Water User Groups (\$millions)			
Decade	Lost income due to reduced manufacturing output	Lost state and local business tax revenues due to reduced manufacturing output	Lost jobs due to reduced manufacturing output
2010	\$2,732.37	\$263.52	16,765
2020	\$4,049.18	\$388.78	25,236
2030	\$7,425.93	\$701.18	46,038
2040	\$8,772.39	\$831.23	54,765
2050	\$9,992.81	\$946.84	62,577
2060	\$11,240.68	\$1,076.53	71,341

*Changes to Income and business taxes are collectively equivalent to a decrease in gross state product, which is analogous to gross domestic product measured at the state rather than national level. Appendix 2 shows results by water user group.

2.5 Impacts of Mining Water Shortages

Mining water shortages in the region are projected to occur in Harris, Liberty, Montgomery and Polk counties, and would primarily affect the oil and gas and aggregates operations. In total, shortages would reduce gross state product by \$35 million in 2010 and \$233 million in 2060 (Table 12).

Table 12: Economic Impacts of Water Shortages for Mining Water User Groups (\$millions)			
Decade	Lost income due to reduced mining output	Lost state and local business tax revenues due to reduced mining output	Lost jobs due to reduced mining output
2010	\$35.39	\$3.42	619
2020	\$61.78	\$5.94	1,048
2030	\$84.50	\$8.15	1,390
2040	\$101.86	\$9.79	1,659
2050	\$204.68	\$19.78	3,472
2060	\$233.81	\$22.46	3,916

*Changes to Income and business taxes are collectively equivalent to a decrease in gross state product, which is analogous to gross domestic product measured at the state rather than national level. Appendix 2 shows results by water user group.

2.6 Impacts of Steam-electric Water Shortages

Water shortages for steam-electric water user groups are projected to occur in Fort Bend, Galveston, Harris, Liberty, and Montgomery counties, and would reduce gross state product by \$380 million dollars in 2010, and \$5,238 million 2060 (Table 13).

Table 13: Economic Impacts of Water Shortages for Steam-electric Water User Groups (\$millions)			
Decade	Lost income due to reduced electrical generation	Lost state and local business tax revenues due to reduced electrical generation	Lost jobs due to reduced electrical generation
2010	\$332.33	\$47.70	1,130
2020	\$650.93	\$93.43	2,213
2030	\$1,144.78	\$164.32	3,892
2040	\$2,537.55	\$364.23	8,626
2050	\$3,411.75	\$489.70	11,598
2060	\$4,580.79	\$657.50	15,572

*Changes to Income and business taxes are collectively equivalent to a decrease in gross state product, which is analogous to Gross Domestic Product measured at the state rather than national level.

2.7 Social Impacts of Water Shortages

As discussed previously, estimated social impacts focus on changes in population and school enrollment. In 2010, estimated population losses total 24,433 with corresponding reductions in school enrollment of 6,891 students (Table 14). In 2060, population in the region would decline by 175,389 people and school enrollment would fall by 32,522 students.

Table 14: Social Impacts of Water Shortages (2010-2060)		
Year	Population Losses	Declines in School Enrollment
2010	24,433	6,891
2020	45,514	12,913
2030	99,071	26,242
2040	122,686	22,674
2050	152,028	28,078
2060	175,839	32,522

2.8 Distribution of Impacts by Major River Basin

Administrative rules require that impacts are presented by both planning region and major river basin. To meet rule requirements, impacts were allocated among basins based on the distribution of water shortages in relevant basins. For example, if 50 percent of water shortages in River Basin A and 50 percent occur in River Basin B, then impacts were split equally among the two basins. Table 15 displays the results.

Table 15: Distribution of Impacts by Major River Basin (2010-2060)						
Water Use	2010	2020	2030	2040	2050	2060
Irrigation						
Brazos	2%	1%	1%	1%	1%	1%
Brazos-Colorado	1%	1%	1%	1%	1%	1%
Neches	1%	1%	1%	1%	1%	1%
San Jacinto	0%	<1%	0%	<1%	1%	2%
San Jacinto-Brazos	72%	70%	68%	67%	65%	63%
Trinity	18%	19%	21%	23%	24%	24%
Trinity-San Jacinto	7%	8%	8%	8%	8%	8%
Manufacturing						
Brazos	52%	61%	60%	60%	60%	63%
Brazos-Colorado	0%	<1%	<1%	<1%	<1%	<1%
San Jacinto	1%	1%	2%	2%	2%	2%
San Jacinto-Brazos	6%	8%	12%	14%	15%	14%
Trinity	0%	1%	1%	1%	1%	1%
Trinity-San Jacinto	42%	29%	26%	24%	23%	20%
Mining						
Brazos	0%	3%	4%	3%	3%	3%
Brazos-Colorado	0%	5%	5%	6%	6%	6%
Neches Trinity	2%	2%	2%	2%	2%	2%
San Jacinto	4%	5%	6%	6%	6%	6%
San Jacinto-Brazos	<1%	2%	6%	6%	6%	5%
Trinity	72%	64%	59%	60%	59%	59%
Trinity-San Jacinto	21%	19%	17%	18%	19%	19%
Municipal						
Brazos	<1%	2%	4%	6%	7%	8%
Brazos-Colorado	4%	1%	1%	1%	1%	<1%
Colorado	0%	<1%	<1%	<1%	<1%	<1%
Neches	0%	<1%	<1%	<1%	<1%	<1%
Neches-Trinity	<1%	<1%	<1%	<1%	<1%	<1%
San Jacinto	71%	85%	81%	77%	74%	73%
San Jacinto-Brazos	23%	10%	13%	15%	17%	17%
Trinity	2%	1%	1%	1%	1%	1%
Trinity-San Jacinto	<1%	<1%	<1%	<1%	<1%	<1%

Table continued on following page.

Table 15: Distribution of Impacts by Major River Basin (continued from previous page)

Water Use	2010	2020	2030	2040	2050	2060
Steam-electric power						
Brazos	88%	14%	14%	13%	12%	10%
San Jacinto-Brazos	12%	11%	9%	7%	6%	5%
San Jacinto	0%	65%	67%	68%	70%	61%
Trinity	0%	10%	11%	12%	11%	9%

Appendix 1: Economic Data for Individual IMPLAN Sectors

Economic Data for Agricultural Water User Groups (\$millions)								
Water Use Category	IMPLAN Sector	IMPLAN Code	Total Sales	Intermediate		Jobs	Income	Business Taxes
				Sales	Final Sales			
Irrigation	Rice milling	49	\$351.85	\$2.69	\$349.15	577	\$45.17	\$2.78
Irrigation	Rice ("all other crop farming")	10	\$49.16	\$43.55	\$5.61	389	\$24.06	\$0.95
Irrigation	Fruit farming	5	\$4.10	0.87	3.23	92	\$2.33	\$0.09
Irrigation	Vegetable and melon farming	3	\$1.28	0.05	1.23	21	\$0.94	\$0.01
Irrigation	Tree nut farming	4	\$1.03	0.05	0.98	16	\$0.72	\$0.03
Irrigation	Grain farming	6	\$0.99	0.25	0.74	43	\$0.46	\$0.02
Irrigation	Total irrigation	NA	\$56.56	\$44.77	\$11.79	561	\$28.51	\$1.10
Irrigation	Non-irrigated crops	various	\$342.84	\$90.91	\$251.93	7,723	\$239.52	\$65.69
Irrigation	Total crop production	NA	\$455.97	\$180.46	\$275.51	8,845	\$296.53	\$67.89
Livestock	Meat processed from carcasses	68	\$646.65	\$190.77	\$455.88	1,473	\$71.87	\$3.77
Livestock	Cattle ranching and farming	11	\$408.82	\$283.48	\$125.35	9,382	\$32.30	\$8.60
Livestock	Fluid milk manufacturing	62	\$330.75	\$79.57	\$251.18	576	\$27.71	\$1.69
Livestock	Cheese manufacturing	64	\$174.09	\$72.10	\$101.99	236	\$12.04	\$1.09
Livestock	Poultry and egg production	12	\$78.31	\$61.37	\$16.94	453	\$26.39	\$0.27
Livestock	Animal- except poultry- slaughtering	67	\$57.66	\$15.42	\$42.25	139	\$9.83	\$0.39
Livestock	Animal production- except cattle and poultry	13	\$53.43	\$45.31	\$8.13	2,622	\$5.19	\$0.83
Livestock	Poultry processing	70	\$40.62	\$12.93	\$27.70	123	\$16.62	\$0.44
Livestock	Rendering and meat byproduct processing	69	\$21.32	\$11.83	\$9.49	28	\$8.82	\$0.23
Livestock	Creamery butter manufacturing	63	\$0.56	\$0.06	\$0.50	1	\$0.23	\$0.001
Total livestock		NA	\$1,812.22	\$772.84	\$1,039.38	15,033	\$210.98	\$17.29

Based on year 2006 data from the Minnesota IMPLAN Group, Inc.

Economic Data for Mining and Steam-electric Water User Groups (\$millions)

Water Use Category	IMPLAN Sector	IMPLAN Code	Total Sales	Intermediate Sales	Final Sales	Jobs	Income	Business Taxes
Mining	Oil and gas extraction	19	\$71,360.84	\$66,271.93	\$5,088.91	80,231	\$41,061.13	\$4,313.45
Mining	Drilling oil and gas wells	27	\$15,338.84	\$76.56	\$15,262.27	19,088	\$5,682.63	\$749.02
Mining	Support activities for oil and gas operations	28	\$7,764.77	\$1,078.50	\$6,686.27	19,751	\$7,042.02	\$316.89
Mining	Natural gas distribution	31	\$5,774.59	\$2,314.45	\$3,460.14	3,524	\$2,105.92	\$873.61
Mining	Coal mining	20	\$170.63	\$63.94	\$106.69	440	\$66.31	\$20.40
Mining	Sand- gravel- clay- and refractory mining	25	\$143.01	\$15.09	\$127.92	719	\$84.81	\$4.14
Mining	Other nonmetallic mineral mining	26	\$89.78	\$8.98	\$80.80	351	\$44.69	\$2.51
Mining	Support activities for other mining	29	\$13.64	\$0.20	\$13.44	17	\$9.69	\$0.08
Mining	Gold- silver- and other metal ore mining	23	\$10.48	\$5.85	\$4.63	30	\$4.44	\$0.36
Mining	Stone mining and quarrying	24	\$3.20	\$0.33	\$2.87	10	\$1.89	\$0.02
Mining	Copper- nickel- lead- and zinc mining	22	\$1.36	\$1.26	\$0.10	4	\$0.65	\$0.07
	Total mining		\$100,671.55	\$69,837.10	\$30,834.44	124,166	\$56,104.32	\$6,280.56
Steam-electric	Power generation and supply	30	\$25,548.42	\$7,187.34	\$18,361.09	12,412	\$17,800.89	\$2,967.22

Based on year 2006 data from the Minnesota IMPLAN Group, Inc.

Economic Data for Manufacturing Water User Groups (\$millions)

Water Use Category	IMPLAN Sector	IMPLAN Code	Intermediate		Jobs	Income	Business Taxes	
			Total Sales	Sales				
Manufacturing	Petrochemical manufacturing	147	\$130,689.99	\$59,878.02	\$70,811.97	16,007	\$15,106.03	\$858.08
Manufacturing	Petroleum refineries	142	\$111,335.06	\$41,383.30	\$69,951.75	11,584	\$16,861.18	\$645.91
Manufacturing	Electronic computer manufacturing	302	\$17,825.77	\$4,149.41	\$13,676.36	7,073	\$1,215.14	\$95.08
Manufacturing	New residential 1-unit structures- all	33	\$14,072.59	\$0.02	\$14,072.57	86,401	\$5,311.90	\$83.61
Manufacturing	Oil and gas field machinery and equipment	261	\$9,925.65	\$369.64	\$9,556.01	24,970	\$3,065.70	\$62.70
Manufacturing	Commercial and institutional buildings	38	\$8,348.60	\$0.00	\$8,348.59	75,325	\$4,552.64	\$56.09
Manufacturing	Other basic organic chemical manufacturing	151	\$7,337.98	\$1,368.11	\$5,969.86	5,934	\$1,492.89	\$60.26
Manufacturing	Plastics material and resin manufacturing	152	\$7,252.15	\$287.19	\$6,964.96	4,644	\$1,755.50	\$56.96
Manufacturing	Other new construction	41	\$3,676.19	\$0.01	\$3,676.20	34,557	\$2,111.29	\$16.61
Manufacturing	Pesticide and other agricultural chemical man	159	\$2,696.36	\$451.80	\$2,244.56	1,361	\$1,020.88	\$17.86
Manufacturing	New residential additions and alterations-all	35	\$2,040.72	\$0.02	\$2,040.70	10,284	\$842.21	\$11.88
Manufacturing	Industrial gas manufacturing	148	\$1,899.82	\$998.97	\$900.84	1,682	\$809.22	\$12.23
Manufacturing	Metal valve manufacturing	248	\$1,852.57	\$200.63	\$1,651.95	5,927	\$892.57	\$11.56
Manufacturing	Highway- street- bridge- and tunnel construct	39	\$1,800.58	\$0.00	\$1,800.59	14,585	\$975.02	\$12.42
Manufacturing	Other miscellaneous chemical product manufacturing	171	\$1,657.38	\$867.12	\$790.26	2,996	\$512.28	\$13.09
Manufacturing	New multifamily housing structures- all	34	\$1,606.21	\$0.00	\$1,606.20	12,556	\$819.77	\$4.74
Manufacturing	Automobile and light truck manufacturing	344	\$1,588.93	\$1.70	\$1,587.23	1,130	\$141.73	\$4.59
Manufacturing	Guided missile and space vehicle manufacturing	354	\$1,543.80	\$75.00	\$1,468.80	3,564	\$534.45	\$6.38
Manufacturing	Pharmaceutical and medicine manufacturing	160	\$1,451.15	\$265.20	\$1,185.95	1,700	\$355.77	\$8.11
Manufacturing	Water- sewer- and pipeline construction	40	\$1,285.08	\$0.01	\$1,285.10	9,543	\$625.45	\$9.03
Manufacturing	Soft drink and ice manufacturing	85	\$1,251.40	\$69.90	\$1,181.50	1,836	\$253.95	\$11.25
Manufacturing	Other basic inorganic chemical manufacturing	150	\$1,230.88	\$271.19	\$959.69	1,873	\$493.21	\$5.39
Manufacturing	Plate work manufacturing	234	\$1,173.25	\$73.85	\$1,099.40	4,225	\$516.20	\$6.72
Manufacturing	Plastics pipe- fittings- and profile shapes	173	\$1,114.96	\$685.80	\$429.16	2,673	\$397.37	\$9.02
Manufacturing	Machine shops	243	\$1,103.43	\$266.31	\$837.12	7,136	\$567.99	\$9.09
Manufacturing	Paint and coating manufacturing	161	\$1,079.49	\$13.73	\$1,065.76	1,683	\$256.74	\$6.18
Manufacturing	Semiconductors and related device manufacturing	311	\$1,035.36	\$551.05	\$484.31	1,142	\$225.39	\$6.37
Manufacturing	Fabricated pipe and pipe fitting manufacturing	252	\$1,032.18	\$116.61	\$915.57	4,508	\$444.76	\$6.14
Manufacturing	All other manufacturing		\$38,380.24	\$8,609.73	\$29,770.51	136,627	\$13,443.08	\$419.66
Manufacturing	Total manufacturing		\$377,287.75	\$120,954.26	\$256,333.49	493526	\$75,600.29	\$2,527.00

Based on year 2006 data from the Minnesota IMPLAN Group, Inc.

Economic Data for Municipal Water User Groups (\$millions)

Water Use Category	IMPLAN Sector	IMPLAN Code	Intermediate		Jobs	Income	Business Taxes	
			Total Sales	Sales				
Municipal	Wholesale trade	390	\$33,539.00	\$16,057.24	\$17,481.76	160,611	\$17,653.96	\$4,964.22
Municipal	Real estate	431	\$25,137.80	\$9,950.90	\$15,186.91	121,747	\$14,545.48	\$3,095.94
Municipal	Owner-occupied dwellings	509	\$21,656.85	-\$0.01	\$21,656.86	0	\$16,776.87	\$2,560.80
Municipal	Architectural and engineering services	439	\$14,855.13	\$9,364.16	\$5,490.97	106,669	\$8,524.77	\$70.68
Municipal	State & Local Education	503	\$11,107.95	\$0.01	\$11,107.94	236,560	\$11,107.95	\$0.00
Municipal	Food services and drinking places	481	\$9,823.10	\$1,254.40	\$8,568.71	185,919	\$4,340.10	\$507.03
Municipal	Pipeline transportation	396	\$9,578.11	\$4,188.82	\$5,389.29	6,791	\$3,971.45	\$849.62
Municipal	Monetary authorities and depository credit in	430	\$9,078.09	\$2,989.90	\$6,088.19	33,849	\$6,374.76	\$116.14
Municipal	Offices of physicians- dentists- and other he	465	\$8,010.08	\$0.00	\$8,010.08	64,239	\$5,711.95	\$50.07
Municipal	Hospitals	467	\$7,955.92	\$0.00	\$7,955.92	65,074	\$4,408.69	\$56.20
Municipal	Telecommunications	422	\$6,823.45	\$2,343.73	\$4,479.72	18,481	\$2,848.73	\$474.82
Municipal	Legal services	437	\$6,720.69	\$4,265.34	\$2,455.35	43,458	\$4,334.35	\$134.97
Municipal	Air transportation	391	\$5,966.11	\$664.50	\$5,301.61	24,528	\$2,034.40	\$256.18
Municipal	Truck transportation	394	\$5,714.00	\$3,093.97	\$2,620.04	49,614	\$2,346.61	\$53.82
Municipal	Insurance carriers	427	\$5,645.46	\$1,646.20	\$3,999.26	22,867	\$1,994.24	\$247.20
Municipal	State & Local Non-Education	504	\$5,631.04	\$0.00	\$5,631.05	81,782	\$5,631.04	\$0.00
Municipal	Office administrative services	452	\$5,538.55	\$2,463.92	\$3,074.63	22,568	\$3,263.33	\$56.26
Municipal	Motor vehicle and parts dealers	401	\$5,042.54	\$548.32	\$4,494.22	41,078	\$2,626.84	\$743.26
Municipal	Cable networks and program distribution	421	\$4,748.61	\$1,127.36	\$3,621.25	5,132	\$1,587.48	\$87.12
Municipal	All other miscellaneous professional and tech	450	\$4,657.77	\$4,158.57	\$499.20	8,112	\$1,884.06	\$37.77
Municipal	Management of companies and enterprises	451	\$4,541.85	\$4,271.19	\$270.66	27,749	\$2,386.75	\$38.10
Municipal	Securities- commodity contracts- investments	426	\$4,341.56	\$2,883.19	\$1,458.36	25,729	\$2,234.36	\$65.37
Municipal	Management consulting services	444	\$4,224.70	\$3,252.06	\$972.64	29,572	\$2,251.86	\$17.49
Municipal	Scenic and sightseeing transportation and sup	397	\$3,844.57	\$1,442.33	\$2,402.24	26,914	\$2,610.03	\$443.86
Municipal	Insurance agencies and brokerages	428	\$3,642.87	\$2,137.73	\$1,505.14	24,528	\$3,089.52	\$19.51
Municipal	All other municipal	NA	\$105,907.43	\$38,161.04	\$67,746.39	1,306,737	\$58,017.46	\$4,122.92
Municipal	Total municipal	NA	\$333,733.23	\$116,264.88	\$217,468.36	2,740,308	\$192,557.01	\$19,069.36

Based on year 2006 data from the Minnesota IMPLAN Group, Inc.

Appendix 2: Impacts by Water User Group

Irrigation (\$millions)						
	2010	2020	2030	2040	2050	2060
Brazoria County						
Reduced income from curtailed rice production and milling activity	\$57.80	\$51.41	\$48.95	\$47.48	\$47.48	\$47.48
Reduced business taxes from curtailed rice production and milling activity	\$6.69	\$5.95	\$5.67	\$5.50	\$5.50	\$5.50
Reduced jobs from curtailed rice production and milling activity	762	678	646	626	626	626
Chambers County						
Reduced income from curtailed rice production and milling activity	\$3.79	\$3.82	\$3.84	\$3.85	\$3.87	\$3.88
Reduced business taxes from curtailed rice production and milling activity	\$0.44	\$0.44	\$0.44	\$0.45	\$0.45	\$0.45
Reduced jobs from curtailed rice production and milling activity	0	0	0	0	0	0
Galveston County						
Reduced income from curtailed rice production and milling activity	\$5.14	\$5.14	\$5.14	\$5.14	\$5.14	\$5.14
Reduced business taxes from curtailed rice production and milling activity	\$0.59	\$0.59	\$0.59	\$0.59	\$0.59	\$0.59
Reduced jobs from curtailed rice production and milling activity	68	68	68	68	68	68
Liberty County						
Reduced income from curtailed rice production and milling activity	\$1.46	\$1.74	\$1.95	\$2.18	\$2.45	\$2.75
Reduced business taxes from curtailed rice production and milling activity	\$0.17	\$0.20	\$0.23	\$0.25	\$0.28	\$0.32
Reduced jobs from curtailed rice production and milling activity	19	23	26	29	32	36
Waller County						
Reduced income from curtailed rice production and milling activity	\$0.00	\$0.27	\$0.00	\$0.01	\$0.89	\$1.90
Reduced business taxes from curtailed rice production and milling activity	\$0.00	\$0.03	\$0.00	\$0.00	\$0.10	\$0.22
Reduced jobs from curtailed rice production and milling activity	0	0	0	0	0	0

Manufacturing (\$millions)						
	2010	2020	2030	2040	2050	2060
Austin County						
Reduced income from reduced manufacturing output	\$0.00	\$11.86	\$22.17	\$31.96	\$40.21	\$106.20
Reduced business taxes from reduced manufacturing output	\$0.00	\$1.07	\$2.00	\$2.89	\$3.63	\$9.59
Reduced jobs from reduced manufacturing output	0	139	260	375	472	1,246
Brazoria County						
Reduced income from reduced manufacturing output	\$700.34	\$1,470.14	\$3,790.98	\$4,648.20	\$5,408.39	\$6,327.48
Reduced business taxes from reduced manufacturing output	\$74.51	\$156.40	\$403.31	\$494.51	\$575.38	\$673.16
Reduced jobs from reduced manufacturing output	4,548	9,546	24,616	30,183	35,119	41,087
Chambers County						
Reduced income from reduced manufacturing output	\$1,705.29	\$1,944.04	\$2,156.17	\$2,367.47	\$2,557.52	\$2,803.08
Reduced business taxes from reduced manufacturing output	\$162.69	\$185.46	\$205.70	\$225.86	\$243.99	\$267.42
Reduced jobs from reduced manufacturing output	9,989	11,388	12,630	13,868	14,981	16,420
Fort Bend County						
Reduced income from reduced manufacturing output	\$0.00	\$74.25	\$593.24	\$635.04	\$662.78	\$583.42
Reduced business taxes from reduced manufacturing output	\$0.00	\$2.98	\$23.83	\$25.51	\$26.63	\$23.44
Reduced jobs from reduced manufacturing output	0	242	1,935	2,071	2,162	1,903
Harris County						
Reduced income from reduced manufacturing output	\$301.80	\$413.05	\$507.94	\$591.82	\$654.59	\$623.10
Reduced business taxes from reduced manufacturing output	\$24.43	\$33.44	\$41.12	\$47.91	\$52.99	\$50.44
Reduced jobs from reduced manufacturing output	1,978	2,707	3,329	3,879	4,290	4,084
Leon County						
Reduced income from reduced manufacturing output	\$0.00	\$10.18	\$20.12	\$60.27	\$78.40	\$95.25
Reduced business taxes from reduced manufacturing output	\$0.00	\$0.62	\$1.22	\$3.66	\$4.76	\$5.78
Reduced jobs from reduced manufacturing output	0	51	101	304	395	480
Liberty County						
Reduced income from reduced manufacturing output	\$0.00	\$13.93	\$27.86	\$42.18	\$110.29	\$132.73
Reduced business taxes from reduced manufacturing output	\$0.00	\$0.45	\$0.91	\$1.37	\$3.59	\$4.32
Reduced jobs from reduced manufacturing output	0	45	91	138	360	433

Manufacturing (cont.)						
	2010	2020	2030	2040	2050	2060
Madison County						
Reduced income from reduced manufacturing activity	\$0.00	\$0.52	\$1.00	\$1.48	\$1.91	\$4.93
Reduced business taxes from reduced manufacturing activity	\$0.00	\$0.02	\$0.04	\$0.07	\$0.09	\$0.22
Reduced jobs from reduced manufacturing activity	0	6	12	18	23	59
Montgomery County						
Reduced income from reduced manufacturing activity	\$24.95	\$105.12	\$294.50	\$373.66	\$453.03	\$532.83
Reduced business taxes from reduced manufacturing activity	\$1.90	\$8.00	\$22.42	\$28.44	\$34.48	\$40.56
Reduced jobs from reduced manufacturing activity	250	1,054	2,952	3,745	4,541	5,341
San Jacinto County						
Reduced income from reduced manufacturing activity	\$0.00	\$0.04	\$0.08	\$0.12	\$0.15	\$0.20
Reduced business taxes from reduced manufacturing activity	\$0.00	\$0.00	\$0.00	\$0.00	\$0.00	\$0.00
Reduced jobs from reduced manufacturing activity	0	0	0	1	1	1
Walker Bend County						
Reduced income from reduced manufacturing activity	\$0.00	\$1.42	\$2.97	\$7.03	\$8.52	\$10.17
Reduced business taxes from reduced manufacturing activity	\$0.00	\$0.05	\$0.10	\$0.23	\$0.28	\$0.34
Reduced jobs from reduced manufacturing activity	0	11	24	56	68	82
Waller County						
Reduced income from reduced manufacturing activity	\$0.00	\$4.64	\$8.90	\$13.16	\$17.03	\$21.28
Reduced business taxes from reduced manufacturing activity	\$0.00	\$0.28	\$0.53	\$0.78	\$1.01	\$1.27
Reduced jobs from reduced manufacturing activity	0	45	87	128	166	207

Mining (\$millions)						
	2010	2020	2030	2040	2050	2060
Harris County						
Reduced income from reduced mining activity	\$0.68	\$1.41	\$1.86	\$4.63	\$5.55	\$6.36
Reduced business taxes from reduced mining activity	\$0.05	\$0.11	\$0.14	\$0.35	\$0.41	\$0.47
Reduced jobs from reduced mining activity	4	9	11	28	34	39
Liberty County						
Reduced income from reduced mining activity	\$0.00	\$1.23	\$2.28	\$3.25	\$4.35	\$5.51
Reduced business taxes from reduced mining activity	\$0.00	\$0.16	\$0.30	\$0.43	\$0.58	\$0.74
Reduced jobs from reduced mining activity	0	45	83	118	159	201
Montgomery County						
Reduced income from reduced mining activity	\$0.65	\$2.55	\$6.59	\$7.82	\$9.03	\$10.04
Reduced business taxes from reduced mining activity	\$0.06	\$0.25	\$0.64	\$0.76	\$0.87	\$0.97
Reduced jobs from reduced mining activity	11	22	29	34	40	44
Polk County						
Reduced income from reduced mining activity	\$0.00	\$0.001	\$0.002	\$0.002	\$0.003	\$0.003
Reduced business taxes from reduced mining activity	\$0.00	\$0.0001	\$0.0001	\$0.0001	\$0.0002	\$0.0002
Reduced jobs from reduced mining activity	0	0	0	0	0	0

Steam-electric (\$millions)						
	2010	2020	2030	2040	2050	2060
Fort Bend County						
Reduced income from reduced electrical generation	\$0.00	\$0.00	\$0.00	\$0.00	\$0.00	\$103.48
Reduced business taxes from reduced electrical generation	\$0.00	\$0.00	\$0.00	\$0.00	\$0.00	\$14.85
Reduced jobs from reduced electrical generation	0	0	0	0	0	352
Galveston County						
Reduced income from reduced electrical generation	\$321.83	\$102.30	\$282.56	\$377.52	\$493.37	\$634.48
Reduced business taxes from reduced electrical generation	\$46.19	\$14.68	\$40.56	\$54.19	\$70.82	\$91.07
Reduced jobs from reduced electrical generation	1,094	348	961	1,283	1,677	2,157
Harris County						
Reduced income from reduced electrical generation	\$10.49	\$501.07	\$713.74	\$1,945.92	\$2,577.91	\$3,348.21
Reduced business taxes from reduced electrical generation	\$1.51	\$71.92	\$102.45	\$279.31	\$370.02	\$480.58
Reduced jobs from reduced electrical generation	36	1,703	2,426	6,615	8,763	11,382
Liberty County						
Reduced income from reduced electrical generation	\$0.00	\$47.56	\$148.48	\$213.53	\$292.79	\$389.47
Reduced business taxes from reduced electrical generation	\$0.00	\$6.83	\$21.31	\$30.65	\$42.03	\$55.90
Reduced jobs from reduced electrical generation	0	162	505	726	995	1,324
Montgomery County						
Reduced income from reduced electrical generation	\$0.00	\$0.00	\$0.00	\$0.59	\$47.69	\$105.16
Reduced business taxes from reduced electrical generation	\$0.00	\$0.00	\$0.00	\$0.08	\$6.85	\$15.09
Reduced jobs from reduced electrical generation	0	0	0	2	162	357

Municipal (\$millions)						
	2010	2020	2030	2040	2050	2060
Alvin						
Monetary value of domestic water shortages	\$0.00	\$0.16	\$0.32	\$0.44	\$0.80	\$1.09
Lost utility revenues	\$0.00	\$0.31	\$0.58	\$0.79	\$1.14	\$1.55
Ames						
Monetary value of domestic water shortages	\$0.00	\$0.03	\$0.07	\$0.12	\$0.76	\$1.12
Lost utility revenues	\$0.00	\$0.04	\$0.08	\$0.12	\$0.17	\$0.22
Angleton						
Monetary value of domestic water shortages	\$0.32	\$0.33	\$0.35	\$0.35	\$0.42	\$0.58
Lost utility revenues	\$0.51	\$0.52	\$0.55	\$0.57	\$0.67	\$0.83
Arcola						
Monetary value of domestic water shortages	\$0.00	\$1.17	\$4.90	\$5.56	\$6.43	\$8.83
Lost income from reduced commercial business activity	\$0.00	\$0.00	\$0.12	\$0.15	\$0.19	\$0.24
Lost jobs due to reduced commercial business activity	0	0	5	6	8	10
Lost state and local taxes from reduced commercial business activity	\$0.00	\$0.00	\$0.02	\$0.02	\$0.03	\$0.04
Lost utility revenues	\$0.00	\$0.26	\$0.56	\$0.64	\$0.74	\$0.86
Bailey's Prairie						
Monetary value of domestic water shortages	\$0.00	\$0.01	\$0.07	\$0.13	\$0.23	\$0.02
Lost utility revenues	\$0.00	\$0.01	\$0.01	\$0.02	\$0.02	\$0.03
Beach City						
Monetary value of domestic water shortages	\$3.82	\$7.01	\$8.99	\$10.87	\$12.77	\$14.64
Lost income from reduced commercial business activity	\$0.26	\$0.41	\$0.55	\$0.67	\$0.80	\$0.93
Lost jobs due to reduced commercial business activity	10	17	22	27	32	38
Lost state and local taxes from reduced commercial business activity	\$0.04	\$0.06	\$0.09	\$0.10	\$0.12	\$0.14
Lost utility revenues	\$0.45	\$0.64	\$0.82	\$0.97	\$1.13	\$1.30
Beasley						
Monetary value of domestic water shortages	\$0.00	\$0.01	\$0.04	\$0.09	\$0.58	\$0.99
Lost utility revenues	\$0.00	\$0.02	\$0.05	\$0.08	\$0.13	\$0.18

Municipal (cont.)						
	2010	2020	2030	2040	2050	2060
Bellaire						
Monetary value of domestic water shortages	\$0.35	\$7.38	\$8.64	\$8.50	\$8.41	\$8.41
Lost income from reduced commercial business activity	\$0.00	\$2.60	\$3.21	\$3.16	\$3.12	\$3.12
Lost jobs due to reduced commercial business activity	0	82	101	100	98	98
Lost state and local taxes from reduced commercial business activity	\$0.00	\$0.37	\$0.46	\$0.45	\$0.45	\$0.45
Lost utility revenues	\$3.07	\$3.55	\$4.02	\$4.52	\$5.05	\$5.63
Belleville						
Monetary value of domestic water shortages	\$0.00	\$0.37	\$0.77	\$0.92	\$3.27	\$4.02
Lost utility revenues	\$0.00	\$0.52	\$0.86	\$1.04	\$1.13	\$1.28
Blue Manor Utility Co.						
Monetary value of domestic water shortages	\$0.35	\$7.38	\$8.64	\$8.50	\$8.41	\$8.41
Lost income from reduced commercial business activity	\$0.00	\$2.60	\$3.21	\$3.16	\$3.12	\$3.12
Lost jobs due to reduced commercial business activity	0	82	101	100	98	98
Lost state and local taxes from reduced commercial business activity	\$0.00	\$0.37	\$0.46	\$0.45	\$0.45	\$0.45
Lost utility revenues	\$0.34	\$0.78	\$0.88	\$0.87	\$0.86	\$0.86
Brazoria MUD #1						
Monetary value of domestic water shortages	\$0.00	\$4.08	\$16.92	\$16.17	\$25.56	\$33.73
Lost income from reduced commercial business activity	\$0.00	\$0.00	\$0.00	\$2.87	\$4.32	\$11.70
Lost jobs due to reduced commercial business activity	0	0	0	90	136	369
Lost state and local taxes from reduced commercial business activity	\$0.00	\$0.00	\$0.00	\$0.41	\$0.62	\$1.67
Lost utility revenues	\$0.00	\$0.68	\$1.36	\$1.96	\$2.62	\$3.31
Brazoria MUD #2						
Monetary value of domestic water shortages	\$0.00	\$3.34	\$13.70	\$13.21	\$17.36	\$26.05
Lost income from reduced commercial business activity	\$0.00	\$0.00	\$0.00	\$3.52	\$5.33	\$14.44
Lost jobs due to reduced commercial business activity	0	0	0	111	168	455
Lost state and local taxes from reduced commercial business activity	\$0.00	\$0.00	\$0.00	\$0.50	\$0.76	\$2.06
Lost utility revenues	\$0.00	\$0.94	\$1.85	\$2.67	\$3.55	\$4.48

Municipal (cont.)						
	2010	2020	2030	2040	2050	2060
Brazoria MUD #3						
Monetary value of domestic water shortages	\$0.00	\$2.95	\$6.46	\$11.72	\$18.38	\$22.79
Lost income from reduced commercial business activity	\$0.00	\$0.00	\$0.56	\$2.07	\$3.12	\$8.43
Lost jobs due to reduced commercial business activity	0	0	18	65	98	266
Lost state and local taxes from reduced commercial business activity	\$0.00	\$0.00	\$0.08	\$0.29	\$0.44	\$1.20
Lost utility revenues	\$0.00	\$0.53	\$1.06	\$1.52	\$2.04	\$2.57
Britmoore Utility						
Monetary value of domestic water shortages	\$1.55	\$7.15	\$9.75	\$11.74	\$13.47	\$15.10
Lost income from reduced commercial business activity	\$0.00	\$2.54	\$3.62	\$4.26	\$4.89	\$5.55
Lost jobs due to reduced commercial business activity	0	80	114	134	154	175
Lost state and local taxes from reduced commercial business activity	\$0.00	\$0.36	\$0.52	\$0.61	\$0.70	\$0.79
Lost utility revenues	\$0.28	\$0.76	\$0.99	\$1.15	\$1.30	\$1.46
Brookshire						
Monetary value of domestic water shortages	\$0.00	\$1.44	\$5.09	\$13.19	\$12.89	\$20.70
Lost income from reduced commercial business activity	\$0.00	\$0.00	\$0.00	\$0.00	\$2.25	\$3.52
Lost jobs due to reduced commercial business activity	0	0	0	0	71	111
Lost state and local taxes from reduced commercial business activity	\$0.00	\$0.00	\$0.00	\$0.00	\$0.32	\$0.50
Lost utility revenues	\$0.00	\$0.34	\$0.72	\$1.15	\$1.67	\$2.30
Brookside Village						
Monetary value of domestic water shortages	\$0.00	\$0.04	\$0.09	\$0.15	\$0.23	\$1.21
Lost utility revenues	\$0.00	\$0.06	\$0.11	\$0.16	\$0.22	\$0.29
Buffalo						
Monetary value of domestic water shortages	\$0.00	\$0.04	\$0.07	\$0.06	\$0.05	\$0.06
Lost utility revenues	\$0.00	\$0.07	\$0.10	\$0.10	\$0.09	\$0.09
Bunker Village						
Monetary value of domestic water shortages	\$0.90	\$1.14	\$4.52	\$4.44	\$4.42	\$4.42
Lost utility revenues	\$1.12	\$1.10	\$1.09	\$1.07	\$1.06	\$1.06

Municipal (cont.)						
	2010	2020	2030	2040	2050	2060
Candlelight Hills Sub.						
Monetary value of domestic water shortages	\$1.48	\$7.01	\$9.49	\$11.03	\$12.52	\$14.09
Lost income from reduced commercial business activity	\$0.00	\$0.94	\$1.36	\$1.61	\$1.86	\$2.11
Lost jobs due to reduced commercial business activity	0	38	55	65	75	85
Lost state and local taxes from reduced commercial business activity	\$0.00	\$0.15	\$0.21	\$0.25	\$0.29	\$0.33
Lost utility revenues	\$0.27	\$0.73	\$0.97	\$1.13	\$1.28	\$1.45
Centerville						
Monetary value of domestic water shortages	\$0.00	\$0.02	\$0.03	\$0.02	\$0.02	\$0.02
Lost utility revenues	\$0.00	\$0.03	\$0.04	\$0.04	\$0.03	\$0.03
Central Harris Co. Regional Water Authority						
Monetary value of domestic water shortages	\$0.00	\$4.33	\$27.43	\$27.43	\$27.43	\$27.43
Lost utility revenues	\$0.00	\$3.90	\$5.08	\$5.08	\$5.08	\$5.08
Chimney Hill MUD						
Monetary value of domestic water shortages	\$0.00	\$0.03	\$0.09	\$0.08	\$0.08	\$0.08
Lost utility revenues	\$0.00	\$0.05	\$0.14	\$0.12	\$0.12	\$0.12
Clear Lake Shores						
Monetary value of domestic water shortages	\$0.82	\$0.86	\$0.88	\$0.86	\$0.86	\$0.96
Lost utility revenues	\$0.20	\$0.21	\$0.21	\$0.21	\$0.21	\$0.21
Cleveland						
Monetary value of domestic water shortages	\$0.00	\$0.02	\$0.05	\$0.07	\$0.13	\$0.19
Lost utility revenues	\$0.00	\$0.04	\$0.09	\$0.14	\$0.23	\$0.34
Clute						
Monetary value of domestic water shortages	\$0.03	\$0.06	\$0.12	\$0.15	\$0.23	\$0.36
Lost utility revenues	\$0.06	\$0.12	\$0.22	\$0.26	\$0.37	\$0.51
Coldspring						
Monetary value of domestic water shortages	\$0.00	\$0.04	\$0.09	\$0.12	\$0.15	\$0.16
Lost utility revenues	\$0.00	\$0.06	\$0.11	\$0.13	\$0.15	\$0.16

Municipal (cont.)						
	2010	2020	2030	2040	2050	2060
Conroe						
Monetary value of domestic water shortages	\$14.91	\$74.86	\$234.26	\$199.42	\$303.76	\$423.28
Lost income from reduced commercial business activity	\$0.00	\$0.00	\$0.00	\$0.00	\$102.70	\$170.72
Lost jobs due to reduced commercial business activity	0	0	0	0	2,289	3,806
Lost state and local taxes from reduced commercial business activity	\$0.00	\$0.00	\$0.00	\$0.00	\$10.93	\$18.17
Lost utility revenues	\$4.73	\$11.32	\$17.88	\$18.67	\$30.19	\$43.52
Consumers Water Inc.						
Monetary value of domestic water shortages	\$1.78	\$8.87	\$12.63	\$15.72	\$20.45	\$26.13
Lost income from reduced commercial business activity	\$0.00	\$0.93	\$1.61	\$2.06	\$3.00	\$3.75
Lost jobs due to reduced commercial business activity	0	38	65	83	121	151
Lost state and local taxes from reduced commercial business activity	\$0.00	\$0.14	\$0.25	\$0.32	\$0.47	\$0.58
Lost utility revenues	\$0.34	\$0.93	\$1.35	\$1.71	\$2.15	\$2.62
County-other (Austin)						
Monetary value of domestic water shortages	\$0.00	\$0.02	\$0.05	\$0.05	\$0.06	\$0.07
County-other (Brazoria)						
Monetary value of domestic water shortages	\$51.27	\$60.68	\$79.48	\$100.95	\$113.90	\$128.36
County-other (Chambers)						
Monetary value of domestic water shortages	\$6.07	\$5.88	\$5.71	\$5.53	\$5.39	\$5.38
County-other (Fort Bend)						
Monetary value of domestic water shortages	\$0.00	\$0.35	\$5.08	\$19.74	\$220.50	\$646.50
County-other (Harris)						
Monetary value of domestic water shortages	\$3.25	\$0.00	\$99.80	\$405.59	\$826.26	\$1,270.87

Municipal (cont.)						
	2010	2020	2030	2040	2050	2060
County-other (Leon)						
Monetary value of domestic water shortages	\$0.00	\$0.06	\$0.07	\$0.03	\$0.01	\$0.02
County-other (Liberty)						
Monetary value of domestic water shortages	\$0.00	\$0.61	\$1.52	\$2.91	\$12.96	\$20.82
County-other (Madison)						
Monetary value of domestic water shortages	\$0.00	\$0.06	\$0.12	\$0.08	\$0.11	\$0.21
County-other (Montgomery)						
Monetary value of domestic water shortages	\$9.42	\$103.75	\$255.07	\$532.19	\$950.21	\$1,625.12
County-other (Polk)						
Monetary value of domestic water shortages	\$0.00	\$0.08	\$0.15	\$0.20	\$0.32	\$0.48
County-other (San Jacinto)						
Monetary value of domestic water shortages	\$0.00	\$0.11	\$0.19	\$0.26	\$0.28	\$0.34
County-other (Waller)						
Monetary value of domestic water shortages	\$0.00	\$0.24	\$0.59	\$1.14	\$6.19	\$10.52
Crosby MUD						
Monetary value of domestic water shortages	\$0.00	\$0.00	\$0.00	\$0.00	\$0.00	\$0.01
Lost utility revenues	\$0.00	\$0.00	\$0.00	\$0.00	\$0.00	\$0.02

Municipal (cont.)						
	2010	2020	2030	2040	2050	2060
Crystal Springs Water Co.						
Monetary value of domestic water shortages	\$1.26	\$5.98	\$8.23	\$11.94	\$22.06	\$29.45
Lost income from reduced commercial business activity	\$0.00	\$0.00	\$1.24	\$2.20	\$7.47	\$11.06
Lost jobs due to reduced commercial business activity	0	0	39	69	236	349
Lost state and local taxes from reduced commercial business activity	\$0.00	\$0.00	\$0.18	\$0.31	\$1.07	\$1.58
Lost utility revenues	\$0.27	\$0.59	\$0.96	\$1.42	\$2.13	\$2.95
Cut and Shoot						
Monetary value of domestic water shortages	\$0.43	\$1.86	\$2.82	\$2.80	\$3.59	\$6.02
Lost income from reduced commercial business activity	\$0.00	\$0.00	\$0.00	\$0.00	\$0.24	\$0.40
Lost jobs due to reduced commercial business activity	0	0	0	0	10	16
Lost state and local taxes from reduced commercial business activity	\$0.00	\$0.00	\$0.00	\$0.00	\$0.04	\$0.06
Lost utility revenues	\$0.10	\$0.20	\$0.30	\$0.30	\$0.47	\$0.67
Daisetta						
Monetary value of domestic water shortages	\$0.00	\$0.00	\$0.01	\$0.01	\$0.01	\$0.02
Lost utility revenues	\$0.00	\$0.01	\$0.01	\$0.01	\$0.02	\$0.04
Danbury						
Monetary value of domestic water shortages	\$0.00	\$0.01	\$0.02	\$0.03	\$0.05	\$0.09
Lost utility revenues	\$0.00	\$0.02	\$0.04	\$0.05	\$0.08	\$0.11
Dayton						
Monetary value of domestic water shortages	\$0.00	\$0.69	\$6.43	\$0.00	\$0.00	\$20.74
Lost income from reduced commercial business activity	\$0.00	\$0.00	\$0.00	\$0.00	\$0.00	\$12.62
Lost jobs due to reduced commercial business activity	0	0	0	0	0	281
Lost state and local taxes from reduced commercial business activity	\$0.00	\$0.00	\$0.00	\$0.00	\$0.00	\$1.34
Lost utility revenues	\$0.00	\$0.78	\$1.49	\$2.17	\$2.96	\$3.88
Deer Park						
Monetary value of domestic water shortages	\$0.00	\$0.00	\$0.03	\$0.04	\$0.13	\$0.27
Lost utility revenues	\$0.00	\$0.00	\$0.05	\$0.08	\$0.22	\$0.46

Municipal (cont.)						
	2010	2020	2030	2040	2050	2060
Dickinson						
Monetary value of domestic water shortages	\$1.08	\$2.07	\$9.79	\$10.07	\$10.38	\$10.73
Lost utility revenues	\$1.25	\$1.86	\$2.17	\$2.23	\$2.30	\$2.38
East Plantation UD						
Monetary value of domestic water shortages	\$0.97	\$4.40	\$7.24	\$7.86	\$10.79	\$19.08
Lost income from reduced commercial business activity	\$0.00	\$0.00	\$0.00	\$0.00	\$0.77	\$2.65
Lost jobs due to reduced commercial business activity	0	0	0	0	31	106
Lost state and local taxes from reduced commercial business activity	\$0.00	\$0.00	\$0.00	\$0.00	\$0.12	\$0.41
Lost utility revenues	\$0.21	\$0.46	\$0.76	\$0.83	\$1.43	\$2.12
El Dorado UD						
Monetary value of domestic water shortages	\$1.52	\$6.70	\$8.46	\$9.22	\$10.03	\$10.94
Lost income from reduced commercial business activity	\$0.00	\$0.90	\$1.21	\$1.33	\$1.47	\$1.62
Lost jobs due to reduced commercial business activity	0	36	49	54	59	65
Lost state and local taxes from reduced commercial business activity	\$0.00	\$0.14	\$0.19	\$0.21	\$0.23	\$0.25
Lost utility revenues	\$0.28	\$0.70	\$0.86	\$0.94	\$1.03	\$1.12
EL Lago						
Monetary value of domestic water shortages	\$4.02	\$4.53	\$4.69	\$4.82	\$4.89	\$6.30
Lost income from reduced commercial business activity	\$0.26	\$0.32	\$0.35	\$0.37	\$0.39	\$0.42
Lost jobs due to reduced commercial business activity	11	13	14	15	16	17
Lost state and local taxes from reduced commercial business activity	\$0.04	\$0.05	\$0.05	\$0.06	\$0.06	\$0.06
Lost utility revenues	\$0.55	\$0.59	\$0.62	\$0.63	\$0.65	\$0.67
Fairchilds						
Monetary value of domestic water shortages	\$0.00	\$1.39	\$6.73	\$9.00	\$15.27	\$19.78
Lost income from reduced commercial business activity	\$0.00	\$0.00	\$0.17	\$0.28	\$0.84	\$1.17
Lost jobs due to reduced commercial business activity	0	0	7	11	34	47
Lost state and local taxes from reduced commercial business activity	\$0.00	\$0.00	\$0.03	\$0.04	\$0.13	\$0.18
Lost utility revenues	\$0.00	\$0.30	\$0.77	\$1.04	\$1.41	\$1.83

Municipal (cont.)						
	2010	2020	2030	2040	2050	2060
First Colony MUD #9						
Monetary value of domestic water shortages	\$0.00	\$0.69	\$10.05	\$10.40	\$10.99	\$11.53
Lost income from reduced commercial business activity	\$0.00	\$0.00	\$0.38	\$0.41	\$0.45	\$0.49
Lost jobs due to reduced commercial business activity	0	0	15	17	18	20
Lost state and local taxes from reduced commercial business activity	\$0.00	\$0.00	\$0.06	\$0.06	\$0.07	\$0.08
Lost utility revenues	\$0.00	\$0.78	\$1.61	\$1.69	\$1.78	\$1.87
Flo Community WSC						
Monetary value of domestic water shortages	\$0.00	\$0.17	\$0.33	\$0.22	\$0.20	\$0.21
Lost utility revenues	\$0.00	\$0.20	\$0.29	\$0.29	\$0.26	\$0.27
Fort Bend County MUD #106						
Monetary value of domestic water shortages	\$0.00	\$0.17	\$0.33	\$0.22	\$0.20	\$0.21
Lost income from reduced commercial business activity	\$0.00	\$0.00	\$0.25	\$0.25	\$0.25	\$0.25
Lost jobs due to reduced commercial business activity	0	0	10	10	10	10
Lost state and local taxes from reduced commercial business activity	\$0.00	\$0.00	\$0.04	\$0.04	\$0.04	\$0.04
Lost utility revenues	\$0.00	\$0.57	\$1.14	\$1.14	\$1.14	\$1.14
Fort Bend County MUD #108						
Monetary value of domestic water shortages	\$0.00	\$1.43	\$5.08	\$5.07	\$5.07	\$5.07
Lost income from reduced commercial business activity	\$0.00	\$0.00	\$0.15	\$0.15	\$0.15	\$0.15
Lost jobs due to reduced commercial business activity	0	0	6	6	6	6
Lost state and local taxes from reduced commercial business activity	\$0.00	\$0.00	\$0.02	\$0.02	\$0.02	\$0.02
Lost utility revenues	\$0.00	\$0.34	\$0.68	\$0.68	\$0.68	\$0.68
Fort Bend County MUD #23						
Monetary value of domestic water shortages	\$0.00	\$4.26	\$12.47	\$12.47	\$12.48	\$12.48
Lost income from reduced commercial business activity	\$0.00	\$0.00	\$1.35	\$1.35	\$1.35	\$1.35
Lost jobs due to reduced commercial business activity	0	0	54	54	54	54
Lost state and local taxes from reduced commercial business activity	\$0.00	\$0.00	\$0.21	\$0.21	\$0.21	\$0.21
Lost utility revenues	\$0.00	\$1.11	\$2.22	\$2.22	\$2.22	\$2.22

Municipal (cont.)						
	2010	2020	2030	2040	2050	2060
Fort Bend County MUD #25						
Monetary value of domestic water shortages	\$0.00	\$4.70	\$17.59	\$29.86	\$65.65	\$88.26
Lost income from reduced commercial business activity	\$0.00	\$0.00	\$2.01	\$3.24	\$4.92	\$6.83
Lost jobs due to reduced commercial business activity	0	0	81	130	198	275
Lost state and local taxes from reduced commercial business activity	\$0.00	\$0.00	\$0.31	\$0.50	\$0.76	\$1.06
Lost utility revenues	\$0.00	\$1.22	\$3.31	\$4.76	\$6.73	\$8.97
Fort Bend County MUD #67						
Monetary value of domestic water shortages	\$0.00	\$2.70	\$7.33	\$7.30	\$7.30	\$7.30
Lost income from reduced commercial business activity	\$0.00	\$0.00	\$0.55	\$0.54	\$0.54	\$0.54
Lost jobs due to reduced commercial business activity	0	0	22	22	22	22
Lost state and local taxes from reduced commercial business activity	\$0.00	\$0.00	\$0.08	\$0.08	\$0.08	\$0.08
Lost utility revenues	\$0.00	\$0.49	\$0.97	\$0.97	\$0.97	\$0.97
Fort Bend County MUD #69						
Monetary value of domestic water shortages	\$0.00	\$1.58	\$4.28	\$4.28	\$4.28	\$4.28
Lost income from reduced commercial business activity	\$0.00	\$0.00	\$0.32	\$0.32	\$0.32	\$0.32
Lost jobs due to reduced commercial business activity	0	0	13	13	13	13
Lost state and local taxes from reduced commercial business activity	\$0.00	\$0.00	\$0.05	\$0.05	\$0.05	\$0.05
Lost utility revenues	\$0.00	\$0.29	\$0.57	\$0.57	\$0.57	\$0.57
Fort Bend County MUD #81						
Monetary value of domestic water shortages	\$0.00	\$3.40	\$12.11	\$16.49	\$22.31	\$28.95
Lost income from reduced commercial business activity	\$0.00	\$0.00	\$0.90	\$1.41	\$4.16	\$5.70
Lost jobs due to reduced commercial business activity	0	0	36	57	167	229
Lost state and local taxes from reduced commercial business activity	\$0.00	\$0.00	\$0.14	\$0.22	\$0.65	\$0.88
Lost utility revenues	\$0.00	\$0.61	\$1.60	\$2.25	\$3.10	\$4.08

Municipal (cont.)						
	2010	2020	2030	2040	2050	2060
Fountain View Sub.						
Monetary value of domestic water shortages	\$2.25	\$11.60	\$17.27	\$12.02	\$17.55	\$28.36
Lost income from reduced commercial business activity	\$0.00	\$0.69	\$0.97	\$1.11	\$1.27	\$1.43
Lost jobs due to reduced commercial business activity	0	28	39	45	51	58
Lost state and local taxes from reduced commercial business activity	\$0.00	\$0.11	\$0.15	\$0.17	\$0.20	\$0.22
Lost utility revenues	\$0.20	\$0.54	\$0.69	\$0.78	\$0.88	\$0.98
Freeport						
Monetary value of domestic water shortages	\$0.00	\$0.33	\$0.86	\$1.39	\$6.70	\$9.56
Lost utility revenues	\$0.00	\$0.53	\$1.09	\$1.57	\$2.13	\$2.76
Fulshear						
Monetary value of domestic water shortages	\$0.00	\$1.45	\$4.97	\$7.87	\$11.18	\$15.14
Lost income from reduced commercial business activity	\$0.00	\$0.00	\$0.37	\$1.09	\$1.56	\$2.12
Lost jobs due to reduced commercial business activity	0	0	15	44	63	85
Lost state and local taxes from reduced commercial business activity	\$0.00	\$0.00	\$0.06	\$0.17	\$0.24	\$0.33
Lost utility revenues	\$0.00	\$0.26	\$0.66	\$0.88	\$1.18	\$1.53
Galena Park						
Monetary value of domestic water shortages	\$0.10	\$0.10	\$0.11	\$0.12	\$0.16	\$0.22
Lost utility revenues	\$0.18	\$0.19	\$0.21	\$0.22	\$0.28	\$0.37
Green Trails MUD						
Monetary value of domestic water shortages	\$0.56	\$9.26	\$13.11	\$17.12	\$19.10	\$21.07
Lost income from reduced commercial business activity	\$0.00	\$0.18	\$0.60	\$0.70	\$0.81	\$0.91
Lost jobs due to reduced commercial business activity	0	7	48	57	65	73
Lost state and local taxes from reduced commercial business activity	\$0.56	\$8.80	\$12.35	\$16.23	\$17.98	\$19.80
Lost utility revenues	\$0.00	\$0.03	\$0.09	\$0.11	\$0.13	\$0.14

Municipal (cont.)						
	2010	2020	2030	2040	2050	2060
HMW SUD						
Monetary value of domestic water shortages	\$2.25	\$11.57	\$17.50	\$12.10	\$18.48	\$30.92
Lost income from reduced commercial business activity	\$0.00	\$0.00	\$2.98	\$2.06	\$4.96	\$8.27
Lost jobs due to reduced commercial business activity	0	0	94	65	156	261
Lost state and local taxes from reduced commercial business activity	\$0.00	\$0.00	\$0.42	\$0.29	\$0.71	\$1.18
Lost utility revenues	\$0.71	\$1.45	\$2.20	\$2.17	\$3.46	\$4.93
Hardin						
Monetary value of domestic water shortages	\$0.00	\$0.02	\$0.06	\$0.11	\$0.62	\$0.89
Lost utility revenues	\$0.00	\$0.04	\$0.07	\$0.11	\$0.15	\$0.20
Hardin WSC						
Monetary value of domestic water shortages	\$0.00	\$0.14	\$0.36	\$2.46	\$3.66	\$5.83
Lost utility revenues	\$0.00	\$0.20	\$0.40	\$0.59	\$0.80	\$1.05
Harris Co. FWSD #47						
Monetary value of domestic water shortages	\$0.05	\$0.04	\$0.03	\$0.02	\$0.01	\$0.01
Lost utility revenues	\$0.10	\$0.08	\$0.05	\$0.03	\$0.02	\$0.02
Harris Co. FWSD #51						
Monetary value of domestic water shortages	\$0.77	\$0.69	\$0.48	\$0.44	\$0.44	\$0.44
Lost utility revenues	\$0.90	\$0.80	\$0.77	\$0.70	\$0.70	\$0.70
Harris Co. FWSD #6						
Monetary value of domestic water shortages	\$1.72	\$3.27	\$5.26	\$4.13	\$4.84	\$6.78
Lost income from reduced commercial business activity	\$0.00	\$0.00	\$0.00	\$0.28	\$0.35	\$0.44
Lost jobs due to reduced commercial business activity	0	0	0	22	28	36
Lost state and local taxes from reduced commercial business activity	\$0.00	\$0.00	\$0.00	\$0.04	\$0.05	\$0.07
Lost utility revenues	\$0.25	\$0.34	\$0.43	\$0.54	\$0.64	\$0.75

Municipal (cont.)						
	2010	2020	2030	2040	2050	2060
Harris Co. MUD #11						
Monetary value of domestic water shortages	\$1.37	\$6.21	\$8.13	\$9.50	\$10.55	\$11.53
Lost income from reduced commercial business activity	\$0.00	\$0.84	\$1.16	\$1.32	\$1.49	\$1.42
Lost jobs due to reduced commercial business activity	0	34	47	53	60	57
Lost state and local taxes from reduced commercial business activity	\$0.00	\$0.13	\$0.18	\$0.20	\$0.23	\$0.22
Lost utility revenues	\$0.25	\$0.65	\$0.83	\$0.93	\$1.03	\$1.15
Harris Co. MUD #119						
Monetary value of domestic water shortages	\$1.85	\$11.52	\$12.96	\$12.69	\$12.54	\$12.54
Lost income from reduced commercial business activity	\$0.00	\$1.63	\$2.00	\$1.96	\$1.94	\$1.94
Lost jobs due to reduced commercial business activity	0	66	80	79	78	78
Lost state and local taxes from reduced commercial business activity	\$0.00	\$0.25	\$0.31	\$0.30	\$0.30	\$0.30
Lost utility revenues	\$0.48	\$1.18	\$1.32	\$1.29	\$1.27	\$1.27
Harris Co. MUD #132						
Monetary value of domestic water shortages	\$3.70	\$27.29	\$37.18	\$45.60	\$58.69	\$67.07
Lost income from reduced commercial business activity	\$0.00	\$3.87	\$5.74	\$7.01	\$8.25	\$9.55
Lost jobs due to reduced commercial business activity	0	156	231	282	332	384
Lost state and local taxes from reduced commercial business activity	\$0.00	\$0.60	\$0.89	\$1.09	\$1.28	\$1.48
Lost utility revenues	\$0.96	\$2.79	\$3.78	\$4.52	\$5.25	\$6.02
Harris Co. MUD #151						
Monetary value of domestic water shortages	\$2.69	\$16.75	\$19.59	\$19.46	\$19.46	\$19.46
Lost income from reduced commercial business activity	\$0.00	\$2.26	\$2.80	\$2.78	\$2.78	\$2.78
Lost jobs due to reduced commercial business activity	0	91	113	112	112	112
Lost state and local taxes from reduced commercial business activity	\$0.00	\$0.35	\$0.43	\$0.43	\$0.43	\$0.43
Lost utility revenues	\$0.70	\$1.62	\$1.84	\$1.83	\$1.83	\$1.83
* MUDs are not necessarily listed in numerical order.						

Municipal (cont.)						
	2010	2020	2030	2040	2050	2060
Harris Co. MUD #152						
Monetary value of domestic water shortages	\$1.66	\$12.72	\$17.70	\$22.11	\$29.11	\$33.65
Lost income from reduced commercial business activity	\$0.00	\$1.81	\$2.73	\$3.40	\$4.11	\$4.81
Lost jobs due to reduced commercial business activity	0	73	110	137	165	193
Lost state and local taxes from reduced commercial business activity	\$0.00	\$0.28	\$0.42	\$0.53	\$0.64	\$0.75
Lost utility revenues	\$0.43	\$1.30	\$1.80	\$2.19	\$2.61	\$3.02
Harris Co. MUD #154						
Monetary value of domestic water shortages	\$0.67	\$61.56	\$90.21	\$109.53	\$128.25	\$148.59
Lost income from reduced commercial business activity	\$0.00	\$1.02	\$2.02	\$2.97	\$5.68	\$6.58
Lost jobs due to reduced commercial business activity	\$0.00	\$1.48	\$2.17	\$2.63	\$3.07	\$3.56
Lost state and local taxes from reduced commercial business activity	\$0.00	\$0.23	\$0.34	\$0.41	\$0.48	\$0.55
Lost utility revenues	\$0.37	\$1.06	\$1.43	\$1.70	\$1.96	\$2.25
Harris Co. MUD #158						
Monetary value of domestic water shortages	\$0.00	\$0.01	\$0.06	\$0.05	\$0.05	\$0.05
Lost utility revenues	\$0.00	\$0.01	\$0.11	\$0.09	\$0.09	\$0.09
Harris Co. MUD #180						
Monetary value of domestic water shortages	\$1.30	\$9.30	\$12.46	\$15.09	\$19.24	\$21.90
Lost income from reduced commercial business activity	\$0.00	\$1.32	\$1.92	\$2.31	\$2.70	\$3.11
Lost jobs due to reduced commercial business activity	0	53	77	93	108	125
Lost state and local taxes from reduced commercial business activity	\$0.00	\$0.20	\$0.30	\$0.36	\$0.42	\$0.48
Lost utility revenues	\$0.34	\$0.95	\$1.27	\$1.50	\$1.72	\$1.96
Harris Co. MUD #189						
Monetary value of domestic water shortages	\$0.39	\$6.73	\$16.33	\$19.80	\$25.27	\$28.78
Lost income from reduced commercial business activity	\$0.00	\$1.73	\$2.52	\$3.04	\$3.54	\$4.09
Lost jobs due to reduced commercial business activity	0	69	101	122	143	164
Lost state and local taxes from reduced commercial business activity	\$0.00	\$0.27	\$0.39	\$0.47	\$0.55	\$0.63
Lost utility revenues	\$0.44	\$1.24	\$1.66	\$1.96	\$2.26	\$2.58

Municipal (cont.)						
	2010	2020	2030	2040	2050	2060
Harris Co. MUD #261						
Monetary value of domestic water shortages	\$0.30	\$7.55	\$14.28	\$11.78	\$11.78	\$11.78
Lost utility revenues	\$0.37	\$1.08	\$1.25	\$1.24	\$1.24	\$1.24
Harris Co. MUD #345						
Monetary value of domestic water shortages	\$2.99	\$17.59	\$20.22	\$20.76	\$23.00	\$23.00
Lost income from reduced commercial business activity	\$0.00	\$2.50	\$3.12	\$3.11	\$3.11	\$3.11
Lost jobs due to reduced commercial business activity	0	100	125	125	125	125
Lost state and local taxes from reduced commercial business activity	\$0.00	\$0.39	\$0.48	\$0.48	\$0.48	\$0.48
Lost utility revenues	\$0.78	\$1.80	\$2.05	\$2.05	\$2.05	\$2.05
Harris Co. MUD #46						
Monetary value of domestic water shortages	\$1.77	\$10.30	\$11.64	\$11.91	\$13.19	\$13.19
Lost income from reduced commercial business activity	\$0.00	\$1.46	\$1.80	\$1.78	\$1.78	\$1.78
Lost jobs due to reduced commercial business activity	0	59	72	72	72	72
Lost state and local taxes from reduced commercial business activity	\$0.00	\$0.23	\$0.28	\$0.28	\$0.28	\$0.28
Lost utility revenues	\$0.46	\$1.05	\$1.18	\$1.17	\$1.17	\$1.17
Harris Co. MUD #5						
Monetary value of domestic water shortages	\$1.38	\$8.05	\$16.58	\$9.12	\$9.96	\$9.96
Lost income from reduced commercial business activity	\$0.00	\$1.14	\$1.40	\$1.37	\$1.35	\$1.35
Lost jobs due to reduced commercial business activity	0	46	56	55	54	54
Lost state and local taxes from reduced commercial business activity	\$0.00	\$0.18	\$0.22	\$0.21	\$0.21	\$0.21
Lost utility revenues	\$0.39	\$0.89	\$0.99	\$0.97	\$0.96	\$0.96
Harris Co. MUD #50						
Monetary value of domestic water shortages	\$0.00	\$0.00	\$0.00	\$0.03	\$0.09	\$0.17
Lost utility revenues	\$0.00	\$0.00	\$0.00	\$0.06	\$0.15	\$0.24

Municipal (cont.)						
	2010	2020	2030	2040	2050	2060
Harris Co. WCID #133						
Monetary value of domestic water shortages	\$0.46	\$9.92	\$10.78	\$10.63	\$10.71	\$10.71
Lost income from reduced commercial business activity	\$0.00	\$1.34	\$1.66	\$1.64	\$1.65	\$1.65
Lost jobs due to reduced commercial business activity	0	54	67	66	66	66
Lost state and local taxes from reduced commercial business activity	\$0.00	\$0.21	\$0.26	\$0.25	\$0.26	\$0.26
Lost utility revenues	\$0.45	\$1.04	\$1.18	\$1.17	\$1.18	\$1.18
Harris Co. WCID #21						
Monetary value of domestic water shortages	\$0.65	\$0.67	\$0.74	\$0.80	\$2.93	\$3.63
Lost utility revenues	\$0.66	\$0.75	\$0.83	\$0.90	\$1.01	\$1.15
Harris Co. WCID #36						
Monetary value of domestic water shortages	\$0.35	\$0.63	\$0.77	\$3.06	\$3.99	\$5.21
Lost utility revenues	\$0.50	\$0.71	\$0.87	\$1.06	\$1.27	\$1.50
Harris Co. WCID #50						
Monetary value of domestic water shortages	\$19.77	\$21.91	\$23.83	\$14.39	\$15.60	\$16.95
Lost income from reduced commercial business activity	\$1.61	\$1.79	\$1.96	\$2.13	\$2.31	\$2.52
Lost jobs due to reduced commercial business activity	65	72	79	86	93	101
Lost state and local taxes from reduced commercial business activity	\$1.08	\$1.19	\$1.30	\$1.40	\$1.52	\$1.66
Lost utility revenues	\$0.18	\$3.82	\$5.45	\$5.33	\$5.26	\$5.26
Harris Co. WCID #76						
Monetary value of domestic water shortages	\$0.18	\$3.82	\$5.45	\$5.33	\$5.26	\$5.26
Lost utility revenues	\$0.18	\$0.40	\$0.45	\$0.44	\$0.43	\$0.43
Harris Co. WCID #84						
Monetary value of domestic water shortages	\$2.09	\$2.11	\$2.13	\$2.11	\$2.17	\$2.26
Lost utility revenues	\$0.46	\$0.46	\$0.47	\$0.46	\$0.48	\$0.50

Municipal (cont.)						
	2010	2020	2030	2040	2050	2060
Hedwig Village						
Monetary value of domestic water shortages	\$7.60	\$7.60	\$8.99	\$8.98	\$9.10	\$9.18
Lost income from reduced commercial business activity	\$1.47	\$1.49	\$1.51	\$1.53	\$1.56	\$1.59
Lost jobs due to reduced commercial business activity	46	47	48	48	49	50
Lost state and local taxes from reduced commercial business activity	\$0.21	\$0.21	\$0.22	\$0.22	\$0.22	\$0.23
Lost utility revenues	\$1.00	\$1.00	\$1.00	\$1.00	\$1.01	\$1.02
Hempstead						
Monetary value of domestic water shortages	\$0.00	\$4.19	\$18.12	\$19.21	\$32.33	\$68.46
Lost income from reduced commercial business activity	\$0.00	\$0.00	\$0.00	\$5.45	\$17.91	\$26.16
Lost jobs due to reduced commercial business activity	0	0	0	172	565	825
Lost state and local taxes from reduced commercial business activity	\$0.00	\$0.00	\$0.00	\$0.78	\$2.55	\$3.73
Lost utility revenues	\$0.00	\$1.09	\$2.27	\$3.61	\$5.20	\$7.06
Hill Crest Village						
Monetary value of domestic water shortages	\$0.00	\$0.00	\$0.00	\$0.00	\$0.01	\$0.01
Lost utility revenues	\$0.00	\$0.00	\$0.00	\$0.00	\$0.01	\$0.02
Hillshire Village						
Monetary value of domestic water shortages	\$0.00	\$0.02	\$0.05	\$0.04	\$0.04	\$0.04
Lost utility revenues	\$0.00	\$0.03	\$0.06	\$0.06	\$0.06	\$0.06
Houston						
Monetary value of domestic water shortages	\$0.01	\$6.51	\$12.01	\$16.38	\$20.20	\$60.15
Lost utility revenues	\$0.02	\$11.66	\$19.76	\$20.04	\$20.41	\$77.37
Humble						
Monetary value of domestic water shortages	\$7.41	\$49.74	\$63.56	\$70.50	\$77.72	\$85.35
Lost income from reduced commercial business activity	\$0.00	\$18.25	\$25.22	\$28.46	\$31.84	\$35.41
Lost jobs due to reduced commercial business activity	0	575	795	898	1,004	1,117
Lost state and local taxes from reduced commercial business activity	\$0.00	\$2.60	\$3.59	\$4.06	\$4.54	\$5.05
Lost utility revenues	\$1.93	\$5.12	\$6.44	\$7.18	\$7.94	\$8.75

Municipal (cont.)						
	2010	2020	2030	2040	2050	2060
Hunters Creek Village						
Monetary value of domestic water shortages	\$25.38	\$28.35	\$39.28	\$24.59	\$26.43	\$28.67
Lost income from reduced commercial business activity	\$3.09	\$3.52	\$3.94	\$8.68	\$9.57	\$10.53
Lost jobs due to reduced commercial business activity	98	111	124	274	302	332
Lost state and local taxes from reduced commercial business activity	\$0.44	\$0.50	\$0.56	\$1.24	\$1.36	\$1.50
Lost utility revenues	\$2.10	\$2.31	\$2.53	\$2.73	\$2.95	\$3.19
Iowa Colony						
Monetary value of domestic water shortages	\$0.00	\$0.01	\$0.02	\$0.04	\$0.37	\$0.59
Lost utility revenues	\$0.00	\$0.02	\$0.04	\$0.05	\$0.07	\$0.10
Jacinto City						
Monetary value of domestic water shortages	\$0.00	\$0.00	\$0.02	\$0.07	\$0.15	\$0.27
Lost utility revenues	\$0.00	\$0.00	\$0.05	\$0.14	\$0.27	\$0.42
Jersey Village						
Monetary value of domestic water shortages	\$0.00	\$2.75	\$10.85	\$10.42	\$14.58	\$17.31
Lost income from reduced commercial business activity	\$0.00	\$0.00	\$0.00	\$2.61	\$3.78	\$5.00
Lost jobs due to reduced commercial business activity	0	0	0	82	119	158
Lost state and local taxes from reduced commercial business activity	\$0.00	\$0.00	\$0.00	\$0.37	\$0.54	\$0.71
Lost utility revenues	\$0.00	\$0.87	\$1.64	\$2.18	\$2.71	\$3.26
Jewett						
Monetary value of domestic water shortages	\$0.00	\$0.05	\$0.09	\$0.08	\$0.08	\$0.08
Lost utility revenues	\$0.00	\$0.07	\$0.11	\$0.10	\$0.10	\$0.10
Katy						
Monetary value of domestic water shortages	\$7.93	\$58.27	\$80.49	\$101.51	\$131.87	\$154.21
Lost income from reduced commercial business activity	\$0.00	\$49.14	\$73.83	\$91.80	\$110.75	\$131.41
Lost jobs due to reduced commercial business activity	0	1,033	1,543	1,905	2,281	2,686
Lost state and local taxes from reduced commercial business activity	\$0.00	\$5.00	\$7.47	\$9.24	\$11.08	\$13.07
Lost utility revenues	\$2.09	\$6.04	\$8.30	\$10.12	\$12.03	\$14.12

Municipal (cont.)						
	2010	2020	2030	2040	2050	2060
Kemah						
Monetary value of domestic water shortages	\$3.28	\$4.33	\$4.79	\$4.93	\$5.00	\$5.11
Lost income from reduced commercial business activity	\$1.19	\$1.54	\$1.75	\$1.82	\$1.85	\$1.90
Lost jobs due to reduced commercial business activity	37	49	55	57	58	60
Lost state and local taxes from reduced commercial business activity	\$0.17	\$0.22	\$0.25	\$0.26	\$0.26	\$0.27
Lost utility revenues	\$0.37	\$0.46	\$0.51	\$0.52	\$0.53	\$0.54
Kendleton						
Monetary value of domestic water shortages	\$0.00	\$0.07	\$0.90	\$1.64	\$4.76	\$7.29
Lost income from reduced commercial business activity	\$0.00	\$0.00	\$0.00	\$0.17	\$0.32	\$1.01
Lost jobs due to reduced commercial business activity	0	0	0	7	13	41
Lost state and local taxes from reduced commercial business activity	\$0.00	\$0.00	\$0.00	\$0.03	\$0.05	\$0.16
Lost utility revenues	\$0.00	\$0.09	\$0.20	\$0.34	\$0.53	\$0.77
Kenefick						
Monetary value of domestic water shortages	\$0.00	\$0.02	\$0.06	\$0.41	\$0.61	\$0.98
Lost utility revenues	\$0.00	\$0.04	\$0.07	\$0.10	\$0.13	\$0.18
Lake Jackson						
Monetary value of domestic water shortages	\$1.44	\$1.90	\$8.43	\$10.78	\$12.66	\$16.37
Lost utility revenues	\$1.83	\$2.41	\$2.92	\$3.42	\$4.02	\$4.72
Lake Livingston Water Supply and Sewer Co.						
Monetary value of domestic water shortages	\$0.00	\$0.06	\$0.12	\$0.15	\$0.23	\$0.36
Lost utility revenues	\$0.00	\$0.11	\$0.21	\$0.25	\$0.35	\$0.47
Longhorn Town UD						
Monetary value of domestic water shortages	\$1.96	\$11.33	\$17.31	\$23.47	\$28.59	\$33.69
Lost income from reduced commercial business activity	\$0.00	\$3.97	\$6.44	\$8.51	\$10.56	\$12.61
Lost jobs due to reduced commercial business activity	0	125	203	268	333	398
Lost state and local taxes from reduced commercial business activity	\$0.00	\$0.57	\$0.92	\$1.21	\$1.51	\$1.80
Lost utility revenues	\$0.35	\$1.19	\$1.76	\$2.27	\$2.77	\$3.27

Municipal (cont.)						
	2010	2020	2030	2040	2050	2060
Madison						
Monetary value of domestic water shortages	\$0.00	\$0.04	\$0.07	\$0.09	\$0.12	\$0.18
Lost utility revenues	\$0.00	\$0.07	\$0.11	\$0.15	\$0.20	\$0.25
Magnolia						
Monetary value of domestic water shortages	\$8.85	\$12.18	\$16.13	\$20.46	\$26.25	\$33.12
Lost income from reduced commercial business activity	\$3.55	\$4.89	\$6.48	\$8.22	\$10.54	\$13.30
Lost jobs due to reduced commercial business activity	112	154	204	259	332	419
Lost state and local taxes from reduced commercial business activity	\$0.51	\$0.70	\$0.92	\$1.17	\$1.50	\$1.90
Lost utility revenues	\$0.20	\$0.53	\$0.92	\$1.34	\$1.91	\$2.59
Manvel						
Monetary value of domestic water shortages	\$0.00	\$0.16	\$0.16	\$0.15	\$0.15	\$0.15
Lost utility revenues	\$0.00	\$0.20	\$0.20	\$0.19	\$0.19	\$0.19
Mason Creek UD						
Monetary value of domestic water shortages	\$4.97	\$29.11	\$33.04	\$32.75	\$32.60	\$32.60
Lost income from reduced commercial business activity	\$0.00	\$10.74	\$13.25	\$13.14	\$13.08	\$13.08
Lost jobs due to reduced commercial business activity	0	339	418	414	412	412
Lost state and local taxes from reduced commercial business activity	\$0.00	\$1.53	\$1.89	\$1.87	\$1.86	\$1.86
Lost utility revenues	\$1.29	\$2.98	\$3.36	\$3.33	\$3.31	\$3.31
Meadows						
Monetary value of domestic water shortages	\$0.00	\$4.32	\$11.82	\$11.68	\$11.63	\$11.63
Lost income from reduced commercial business activity	\$0.00	\$0.00	\$3.51	\$3.47	\$3.45	\$3.45
Lost jobs due to reduced commercial business activity	0	0	111	109	109	109
Lost state and local taxes from reduced commercial business activity	\$0.00	\$0.00	\$0.50	\$0.49	\$0.49	\$0.49
Lost utility revenues	\$0.00	\$1.12	\$2.22	\$2.20	\$2.18	\$2.18
Mercy WSC						
Monetary value of domestic water shortages	\$0.00	\$0.11	\$0.25	\$0.62	\$1.83	\$2.18
Lost utility revenues	\$0.00	\$0.16	\$0.28	\$0.37	\$0.43	\$0.48
Missouri City						
Monetary value of domestic water shortages	\$0.00	\$0.00	\$6.76	\$16.42	\$95.68	\$121.77
Lost utility revenues	\$0.00	\$0.00	\$7.97	\$15.07	\$20.49	\$32.02

Municipal (cont.)						
	2010	2020	2030	2040	2050	2060
Mont Belvieu						
Monetary value of domestic water shortages	\$16.73	\$23.27	\$29.83	\$35.04	\$40.45	\$46.00
Lost income from reduced commercial business activity	\$2.56	\$3.76	\$4.85	\$5.81	\$6.80	\$7.82
Lost jobs due to reduced commercial business activity	81	118	153	183	214	247
Lost state and local taxes from reduced commercial business activity	\$0.37	\$0.54	\$0.69	\$0.83	\$0.97	\$1.11
Lost utility revenues	\$1.53	\$2.11	\$2.65	\$3.12	\$3.60	\$4.10
Montgomery						
Monetary value of domestic water shortages	\$0.51	\$16.06	\$26.64	\$36.18	\$39.77	\$50.18
Lost income from reduced commercial business activity	\$0.00	\$6.03	\$9.91	\$13.74	\$13.86	\$18.18
Lost jobs due to reduced commercial business activity	0	190	313	433	437	573
Lost state and local taxes from reduced commercial business activity	\$0.00	\$0.86	\$1.41	\$1.96	\$1.98	\$2.59
Lost utility revenues	\$0.11	\$1.64	\$2.59	\$3.52	\$3.82	\$4.85
Montgomery MUD #18						
Monetary value of domestic water shortages	\$2.48	\$12.20	\$20.13	\$25.33	\$49.72	\$115.72
Lost income from reduced commercial business activity	\$0.00	\$0.00	\$2.28	\$2.43	\$10.49	\$17.04
Lost jobs due to reduced commercial business activity	0	0	91	97	420	683
Lost state and local taxes from reduced commercial business activity	\$0.00	\$0.00	\$0.35	\$0.38	\$1.63	\$2.64
Lost utility revenues	\$0.79	\$1.84	\$3.81	\$4.67	\$7.97	\$11.81
Montgomery MUD #19						
Monetary value of domestic water shortages	\$0.95	\$3.61	\$3.63	\$2.35	\$3.63	\$5.07
Lost income from reduced commercial business activity	\$0.00	\$0.00	\$0.23	\$0.13	\$0.25	\$0.34
Lost jobs due to reduced commercial business activity	0	0	9	5	10	14
Lost state and local taxes from reduced commercial business activity	\$0.00	\$0.00	\$0.04	\$0.02	\$0.04	\$0.05
Lost utility revenues	\$0.21	\$0.38	\$0.47	\$0.38	\$0.49	\$0.56
Montgomery MUD #8						
Monetary value of domestic water shortages	\$1.74	\$8.72	\$10.80	\$10.85	\$12.51	\$16.52
Lost income from reduced commercial business activity	\$0.00	\$0.00	\$0.68	\$0.61	\$0.92	\$1.15
Lost jobs due to reduced commercial business activity	0	0	27	24	37	46
Lost state and local taxes from reduced commercial business activity	\$0.00	\$0.00	\$0.11	\$0.09	\$0.14	\$0.18
Lost utility revenues	\$0.38	\$0.92	\$1.39	\$1.37	\$1.64	\$1.84

Municipal (cont.)						
	2010	2020	2030	2040	2050	2060
Montgomery MUD #9						
Monetary value of domestic water shortages	\$1.64	\$8.66	\$11.58	\$11.73	\$13.67	\$18.67
Lost income from reduced commercial business activity	\$0.00	\$0.00	\$0.77	\$0.65	\$1.01	\$1.29
Lost jobs due to reduced commercial business activity	0	0	31	26	40	52
Lost state and local taxes from reduced commercial business activity	\$0.00	\$0.00	\$0.12	\$0.10	\$0.16	\$0.20
Lost utility revenues	\$0.36	\$0.91	\$1.50	\$1.47	\$1.81	\$2.06
Montgomery MUD #2						
Monetary value of domestic water shortages	\$1.15	\$4.40	\$4.47	\$4.94	\$5.55	\$7.11
Lost income from reduced commercial business activity	\$0.00	\$0.00	\$0.28	\$0.37	\$0.46	\$0.53
Lost jobs due to reduced commercial business activity	0	0	11	15	18	21
Lost state and local taxes from reduced commercial business activity	\$0.00	\$0.00	\$0.04	\$0.06	\$0.07	\$0.08
Lost utility revenues	\$0.25	\$0.46	\$0.57	\$0.65	\$0.73	\$0.79
Montgomery MUD #3						
Monetary value of domestic water shortages	\$1.00	\$4.02	\$4.60	\$4.48	\$6.34	\$9.69
Lost income from reduced commercial business activity	\$0.00	\$0.00	\$0.29	\$0.18	\$0.41	\$0.64
Lost jobs due to reduced commercial business activity	0	0	11	7	16	26
Lost state and local taxes from reduced commercial business activity	\$0.00	\$0.00	\$0.04	\$0.03	\$0.06	\$0.10
Lost utility revenues	\$0.22	\$0.42	\$0.59	\$0.53	\$0.79	\$1.08
Montgomery MUD #4						
Monetary value of domestic water shortages	\$2.03	\$7.72	\$7.87	\$6.75	\$8.27	\$10.85
Lost income from reduced commercial business activity	\$0.00	\$0.00	\$0.49	\$0.27	\$0.53	\$0.73
Lost jobs due to reduced commercial business activity	0	0	20	11	21	29
Lost state and local taxes from reduced commercial business activity	\$0.00	\$0.00	\$0.08	\$0.04	\$0.08	\$0.11
Lost utility revenues	\$0.45	\$0.81	\$1.01	\$0.81	\$1.04	\$1.21
Montgomery County WCID #1						
Monetary value of domestic water shortages	\$1.03	\$4.13	\$4.73	\$5.98	\$7.80	\$12.48
Lost income from reduced commercial business activity	\$0.00	\$0.00	\$0.30	\$0.45	\$1.28	\$1.72
Lost jobs due to reduced commercial business activity	0	0	12	18	51	69
Lost state and local taxes from reduced commercial business activity	\$0.00	\$0.00	\$0.05	\$0.07	\$0.20	\$0.27
Lost utility revenues	\$0.23	\$0.44	\$0.61	\$0.79	\$1.02	\$1.29

Municipal (cont.)						
	2010	2020	2030	2040	2050	2060
Needville						
Monetary value of domestic water shortages	\$0.00	\$0.20	\$2.36	\$6.33	\$6.26	\$10.66
Lost income from reduced commercial business activity	\$0.00	\$0.00	\$0.00	\$0.00	\$1.26	\$2.07
Lost jobs due to reduced commercial business activity	0	0	0	0	40	65
Lost state and local taxes from reduced commercial business activity	\$0.00	\$0.00	\$0.00	\$0.00	\$0.18	\$0.29
Lost utility revenues	\$0.00	\$0.19	\$0.43	\$0.67	\$1.00	\$1.40
New Caney MUD						
Monetary value of domestic water shortages	\$1.93	\$8.47	\$11.32	\$16.01	\$27.42	\$29.52
Lost income from reduced commercial business activity	\$0.00	\$0.00	\$2.88	\$4.83	\$15.46	\$23.02
Lost jobs due to reduced commercial business activity	0	0	91	152	488	726
Lost state and local taxes from reduced commercial business activity	\$0.00	\$0.00	\$0.41	\$0.69	\$2.20	\$3.28
Lost utility revenues	\$0.61	\$1.28	\$2.10	\$3.02	\$4.38	\$6.08
New Waverly						
Monetary value of domestic water shortages	\$0.00	\$0.02	\$0.03	\$0.02	\$0.02	\$0.02
Lost utility revenues	\$0.00	\$0.03	\$0.05	\$0.04	\$0.03	\$0.03
Normangee						
Monetary value of domestic water shortages	\$0.00	\$0.02	\$0.04	\$0.03	\$0.03	\$0.04
Lost utility revenues	\$0.00	\$0.03	\$0.05	\$0.05	\$0.04	\$0.05
North Belt UD						
Monetary value of domestic water shortages	\$0.28	\$7.93	\$11.38	\$12.76	\$17.50	\$20.28
Lost income from reduced commercial business activity	\$0.00	\$1.07	\$1.63	\$2.04	\$2.47	\$2.90
Lost jobs due to reduced commercial business activity	0	43	65	82	99	116
Lost state and local taxes from reduced commercial business activity	\$0.00	\$0.17	\$0.25	\$0.32	\$0.38	\$0.45
Lost utility revenues	\$0.28	\$0.83	\$1.16	\$1.42	\$1.70	\$1.97
North Fort Bend Water Authority						
Monetary value of domestic water shortages	\$0.00	\$8.10	\$169.31	\$178.63	\$330.72	\$413.42
Lost income from reduced commercial business activity	\$0.00	\$0.09	\$1.88	\$2.51	\$303.68	\$405.39
Lost jobs due to reduced commercial business activity	0	3	59	79	4,676	6,229
Lost state and local taxes from reduced commercial business activity	\$0.00	\$0.01	\$0.27	\$0.36	\$24.28	\$32.36
Lost utility revenues	\$0.00	\$7.34	\$39.28	\$61.96	\$80.05	\$96.19

Municipal (cont.)						
	2010	2020	2030	2040	2050	2060
North Green MUD						
Monetary value of domestic water shortages	\$1.15	\$5.01	\$6.30	\$6.75	\$7.26	\$7.82
Lost income from reduced commercial business activity	\$0.00	\$0.67	\$0.90	\$0.96	\$1.04	\$1.12
Lost jobs due to reduced commercial business activity	0	27	36	39	42	45
Lost state and local taxes from reduced commercial business activity	\$0.00	\$0.10	\$0.14	\$0.15	\$0.16	\$0.17
Lost utility revenues	\$0.21	\$0.52	\$0.64	\$0.69	\$0.74	\$0.80
North Harris County Regional Water Authority						
Monetary value of domestic water shortages	\$0.00	\$500.43	\$581.32	\$632.60	\$660.64	\$685.97
Lost income from reduced commercial business activity	\$0.00	\$0.00	\$547.06	\$626.69	\$658.95	\$697.63
Lost jobs due to reduced commercial business activity	0	0	12,171	13,942	14,660	15,521
Lost state and local taxes from reduced commercial business activity	\$0.00	\$0.00	\$58.22	\$66.69	\$70.13	\$74.24
Lost utility revenues	\$0.16	\$92.49	\$132.44	\$145.56	\$150.87	\$157.24
Northwest Harris County MUD #23						
Monetary value of domestic water shortages	\$1.93	\$9.63	\$13.58	\$17.02	\$19.98	\$22.93
Lost income from reduced commercial business activity	\$0.00	\$1.30	\$1.94	\$2.35	\$2.81	\$3.27
Lost jobs due to reduced commercial business activity	0	52	78	94	113	131
Lost state and local taxes from reduced commercial business activity	\$0.00	\$0.20	\$0.30	\$0.36	\$0.44	\$0.51
Lost utility revenues	\$0.35	\$1.01	\$1.38	\$1.64	\$1.93	\$2.22
Northwest Park MUD						
Monetary value of domestic water shortages	\$5.96	\$42.93	\$49.42	\$48.43	\$47.96	\$47.96
Lost income from reduced commercial business activity	\$0.00	\$15.84	\$19.82	\$19.42	\$19.24	\$19.24
Lost jobs due to reduced commercial business activity	0	499	625	613	607	607
Lost state and local taxes from reduced commercial business activity	\$0.00	\$2.26	\$2.83	\$2.77	\$2.74	\$2.74
Lost utility revenues	\$1.55	\$4.39	\$5.02	\$4.92	\$4.87	\$4.87
Oak Ridge North						
Monetary value of domestic water shortages	\$1.41	\$5.96	\$7.26	\$7.50	\$10.85	\$17.91
Lost income from reduced commercial business activity	\$0.00	\$0.00	\$1.17	\$0.79	\$1.88	\$3.08
Lost jobs due to reduced commercial business activity	0	0	37	25	59	97
Lost state and local taxes from reduced commercial business activity	\$0.00	\$0.00	\$0.17	\$0.11	\$0.27	\$0.44
Lost utility revenues	\$0.31	\$0.63	\$0.93	\$0.90	\$1.41	\$1.99

Municipal (cont.)						
	2010	2020	2030	2040	2050	2060
Old River-Winfree						
Monetary value of domestic water shortages	\$3.89	\$4.26	\$4.53	\$4.75	\$5.08	\$5.45
Lost income from reduced commercial business activity	\$0.24	\$0.26	\$0.28	\$0.30	\$0.32	\$0.35
Lost jobs due to reduced commercial business activity	9	11	11	12	13	14
Lost state and local taxes from reduced commercial business activity	\$0.04	\$0.04	\$0.04	\$0.05	\$0.05	\$0.05
Lost utility revenues	\$0.34	\$0.38	\$0.40	\$0.42	\$0.45	\$0.49
Onalaska						
Monetary value of domestic water shortages	\$0.00	\$0.06	\$0.14	\$0.76	\$1.02	\$1.23
Lost utility revenues	\$0.00	\$0.08	\$0.14	\$0.18	\$0.22	\$0.27
Orbit Systems, Inc.						
Monetary value of domestic water shortages	\$0.00	\$0.11	\$0.41	\$1.97	\$2.84	\$3.97
Lost utility revenues	\$0.00	\$0.15	\$0.31	\$0.45	\$0.59	\$0.76
Oyster Creek						
Monetary value of domestic water shortages	\$0.28	\$0.61	\$1.08	\$0.26	\$0.33	\$1.93
Lost income from reduced commercial business activity	\$0.00	\$0.00	\$0.00	\$0.00	\$0.00	\$0.14
Lost jobs due to reduced commercial business activity	0	0	0	0	0	6
Lost state and local taxes from reduced commercial business activity	\$0.00	\$0.00	\$0.00	\$0.00	\$0.00	\$0.02
Lost utility revenues	\$0.07	\$0.11	\$0.15	\$0.19	\$0.24	\$0.29
Panorama Village						
Monetary value of domestic water shortages	\$1.35	\$5.43	\$8.75	\$5.22	\$6.49	\$9.26
Lost income from reduced commercial business activity	\$0.00	\$0.00	\$0.93	\$0.55	\$1.12	\$1.60
Lost jobs due to reduced commercial business activity	0	0	29	17	35	50
Lost state and local taxes from reduced commercial business activity	\$0.00	\$0.00	\$0.13	\$0.08	\$0.16	\$0.23
Lost utility revenues	\$0.30	\$0.57	\$0.74	\$0.63	\$0.85	\$1.03
Parkway UD						
Monetary value of domestic water shortages	\$4.71	\$4.61	\$4.48	\$4.36	\$4.28	\$4.32
Lost income from reduced commercial business activity	\$0.67	\$0.66	\$0.64	\$0.62	\$0.61	\$0.62
Lost jobs due to reduced commercial business activity	27	26	26	25	25	25
Lost state and local taxes from reduced commercial business activity	\$0.10	\$0.10	\$0.10	\$0.10	\$0.09	\$0.10
Lost utility revenues	\$0.48	\$0.47	\$0.46	\$0.44	\$0.44	\$0.44

Municipal (cont.)						
	2010	2020	2030	2040	2050	2060
Patton Village						
Monetary value of domestic water shortages	\$0.18	\$0.70	\$0.82	\$1.05	\$1.39	\$2.33
Lost income from reduced commercial business activity	\$0.00	\$0.00	\$0.05	\$0.08	\$0.23	\$0.32
Lost jobs due to reduced commercial business activity	0	0	2	3	9	13
Lost state and local taxes from reduced commercial business activity	\$0.00	\$0.00	\$0.01	\$0.01	\$0.04	\$0.05
Lost utility revenues	\$0.04	\$0.07	\$0.10	\$0.14	\$0.18	\$0.24
Pearland						
Monetary value of domestic water shortages	\$0.00	\$0.00	\$1.83	\$5.45	\$11.37	\$56.64
Lost utility revenues	\$0.00	\$0.00	\$3.28	\$7.78	\$12.92	\$18.27
Pine Island						
Monetary value of domestic water shortages	\$0.00	\$0.24	\$0.83	\$2.11	\$2.49	\$3.34
Lost income from reduced commercial business activity	\$0.00	\$0.00	\$0.00	\$0.00	\$0.35	\$0.56
Lost jobs due to reduced commercial business activity	0	0	0	0	11	18
Lost state and local taxes from reduced commercial business activity	\$0.00	\$0.00	\$0.00	\$0.00	\$0.05	\$0.08
Lost utility revenues	\$0.00	\$0.06	\$0.12	\$0.18	\$0.27	\$0.37
Pine Trails Utility						
Monetary value of domestic water shortages	\$0.44	\$1.80	\$2.32	\$2.71	\$3.44	\$4.39
Lost utility revenues	\$0.50	\$0.62	\$0.74	\$0.86	\$0.99	\$1.14
Piney Point Village						
Monetary value of domestic water shortages	\$8.91	\$9.36	\$9.91	\$10.35	\$10.88	\$11.46
Lost income from reduced commercial business activity	\$2.26	\$2.44	\$2.62	\$2.79	\$5.99	\$6.44
Lost jobs due to reduced commercial business activity	71	77	83	88	189	203
Lost state and local taxes from reduced commercial business activity	\$0.32	\$0.35	\$0.37	\$0.40	\$0.85	\$0.92
Lost utility revenues	\$1.53	\$1.62	\$1.70	\$1.79	\$1.89	\$2.00
Plantation MUD						
Monetary value of domestic water shortages	\$0.00	\$1.82	\$4.88	\$4.79	\$4.76	\$4.76
Lost income from reduced commercial business activity	\$0.00	\$0.00	\$0.94	\$0.92	\$0.92	\$0.92
Lost jobs due to reduced commercial business activity	0	0	30	29	29	29
Lost state and local taxes from reduced commercial business activity	\$0.00	\$0.00	\$0.13	\$0.13	\$0.13	\$0.13
Lost utility revenues	\$0.00	\$0.33	\$0.65	\$0.63	\$0.63	\$0.63

Municipal (cont.)						
	2010	2020	2030	2040	2050	2060
Pleak						
Monetary value of domestic water shortages	\$0.00	\$0.14	\$0.45	\$3.14	\$5.66	\$8.70
Lost utility revenues	\$0.00	\$0.20	\$0.44	\$0.69	\$1.02	\$1.40
Plum Grove						
Monetary value of domestic water shortages	\$0.00	\$0.06	\$0.72	\$0.79	\$0.91	\$1.43
Lost income from reduced commercial business activity	\$0.00	\$0.00	\$0.00	\$0.00	\$0.00	\$0.48
Lost jobs due to reduced commercial business activity	0	0	0	0	0	15
Lost state and local taxes from reduced commercial business activity	\$0.00	\$0.00	\$0.00	\$0.00	\$0.00	\$0.07
Lost utility revenues	\$0.00	\$0.07	\$0.13	\$0.20	\$0.27	\$0.35
Point Aquarius MUD						
Monetary value of domestic water shortages	\$1.51	\$7.24	\$11.23	\$18.14	\$32.34	\$51.26
Lost income from reduced commercial business activity	\$0.00	\$0.00	\$0.77	\$2.98	\$4.90	\$7.14
Lost jobs due to reduced commercial business activity	0	0	31	119	196	286
Lost state and local taxes from reduced commercial business activity	\$0.00	\$0.00	\$0.12	\$0.46	\$0.76	\$1.11
Lost utility revenues	\$0.33	\$0.76	\$1.46	\$2.37	\$3.59	\$5.01
Point Blank						
Monetary value of domestic water shortages	\$0.00	\$0.01	\$0.03	\$0.04	\$0.05	\$0.05
Lost utility revenues	\$0.00	\$0.02	\$0.04	\$0.05	\$0.05	\$0.05
Porter WSC						
Monetary value of domestic water shortages	\$2.57	\$11.07	\$13.03	\$19.78	\$40.27	\$43.97
Lost income from reduced commercial business activity	\$0.00	\$0.00	\$0.00	\$11.96	\$14.60	\$16.82
Lost jobs due to reduced commercial business activity	0	0	0	189	460	530
Lost state and local taxes from reduced commercial business activity	\$0.00	\$0.00	\$0.00	\$1.70	\$2.08	\$2.40
Lost utility revenues	\$0.82	\$1.67	\$2.62	\$3.73	\$4.13	\$4.49
Prairie View						
Monetary value of domestic water shortages	\$0.00	\$0.11	\$0.27	\$0.51	\$0.97	\$5.47
Lost utility revenues	\$0.00	\$0.18	\$0.39	\$0.64	\$0.94	\$1.31

Municipal (cont.)						
	2010	2020	2030	2040	2050	2060
Rayford Road MUD						
Monetary value of domestic water shortages	\$4.78	\$18.25	\$22.44	\$18.33	\$19.03	\$25.68
Lost income from reduced commercial business activity	\$0.00	\$0.00	\$0.00	\$0.00	\$1.28	\$1.73
Lost jobs due to reduced commercial business activity	0	0	0	0	51	69
Lost state and local taxes from reduced commercial business activity	\$0.00	\$0.00	\$0.00	\$0.00	\$0.20	\$0.27
Lost utility revenues	\$0.97	\$1.78	\$2.19	\$1.79	\$2.30	\$2.67
Richmond						
Monetary value of domestic water shortages	\$0.08	\$0.11	\$0.12	\$0.15	\$0.18	\$0.95
Lost utility revenues	\$0.11	\$0.14	\$0.15	\$0.17	\$0.20	\$1.36
River Plantation MUD						
Monetary value of domestic water shortages	\$1.72	\$6.56	\$6.59	\$5.65	\$6.69	\$9.14
Lost income from reduced commercial business activity	\$0.00	\$0.00	\$1.07	\$0.60	\$1.17	\$1.59
Lost jobs due to reduced commercial business activity	0	0	34	19	37	50
Lost state and local taxes from reduced commercial business activity	\$0.00	\$0.00	\$0.15	\$0.09	\$0.17	\$0.23
Lost utility revenues	\$0.38	\$0.69	\$0.85	\$0.68	\$0.87	\$1.02
Riverside WSC						
Monetary value of domestic water shortages	\$0.00	\$0.05	\$0.70	\$2.32	\$2.97	\$2.79
Lost income from reduced commercial business activity	\$0.00	\$0.00	\$0.00	\$0.00	\$0.00	\$0.50
Lost jobs due to reduced commercial business activity	0	0	0	0	0	16
Lost state and local taxes from reduced commercial business activity	\$0.00	\$0.00	\$0.00	\$0.00	\$0.00	\$0.07
Lost utility revenues	\$0.00	\$0.06	\$0.13	\$0.33	\$0.44	\$0.59
Rolling Fork MUD						
Monetary value of domestic water shortages	\$14.23	\$14.70	\$15.18	\$15.66	\$16.25	\$16.91
Lost income from reduced commercial business activity	\$2.20	\$2.27	\$2.35	\$2.42	\$2.51	\$2.61
Lost jobs due to reduced commercial business activity	88	91	94	97	101	105
Lost state and local taxes from reduced commercial business activity	\$0.34	\$0.35	\$0.36	\$0.38	\$0.39	\$0.41
Lost utility revenues	\$0.42	\$1.01	\$1.19	\$1.24	\$1.30	\$1.36

Municipal (cont.)						
	2010	2020	2030	2040	2050	2060
Roman Forest						
Monetary value of domestic water shortages	\$1.13	\$9.56	\$13.74	\$21.53	\$32.24	\$46.28
Lost income from reduced commercial business activity	\$0.00	\$0.00	\$2.41	\$7.87	\$11.97	\$16.87
Lost jobs due to reduced commercial business activity	0	0	76	248	378	532
Lost state and local taxes from reduced commercial business activity	\$0.00	\$0.00	\$0.34	\$1.12	\$1.71	\$2.41
Lost utility revenues	\$0.25	\$0.83	\$1.53	\$2.28	\$3.28	\$4.48
Rosenberg						
Monetary value of domestic water shortages	\$0.00	\$0.00	\$0.41	\$3.72	\$35.71	\$7.45
Lost utility revenues	\$0.00	\$0.00	\$0.47	\$3.35	\$7.26	\$11.90
San Felipe						
Monetary value of domestic water shortages	\$0.00	\$0.03	\$0.06	\$0.08	\$0.09	\$0.11
Lost utility revenues	\$0.00	\$0.04	\$0.07	\$0.09	\$0.09	\$0.10
Seabrook						
Monetary value of domestic water shortages	\$9.85	\$9.91	\$21.30	\$25.08	\$47.21	\$53.63
Lost income from reduced commercial business activity	\$7.03	\$10.74	\$14.31	\$18.15	\$21.96	\$25.99
Lost jobs due to reduced commercial business activity	157	239	319	405	490	579
Lost state and local taxes from reduced commercial business activity	\$0.75	\$1.14	\$1.52	\$1.93	\$2.34	\$2.77
Lost utility revenues	\$2.31	\$3.07	\$3.80	\$4.58	\$5.35	\$6.16
Sealy						
Monetary value of domestic water shortages	\$0.00	\$0.46	\$0.99	\$3.83	\$4.53	\$5.13
Lost utility revenues	\$0.00	\$0.66	\$1.11	\$1.33	\$1.44	\$1.63
Shenandoah						
Monetary value of domestic water shortages	\$2.31	\$10.39	\$12.29	\$12.32	\$17.24	\$27.09
Lost income from reduced commercial business activity	\$0.00	\$0.00	\$3.07	\$2.01	\$4.62	\$7.45
Lost jobs due to reduced commercial business activity	0	0	97	63	146	235
Lost state and local taxes from reduced commercial business activity	\$0.00	\$0.00	\$0.44	\$0.29	\$0.66	\$1.06
Lost utility revenues	\$0.73	\$1.57	\$2.27	\$2.13	\$3.23	\$4.44

Municipal (cont.)						
	2010	2020	2030	2040	2050	2060
Shephard						
Monetary value of domestic water shortages	\$0.00	\$0.07	\$0.17	\$0.22	\$0.25	\$0.26
Lost utility revenues	\$0.00	\$0.11	\$0.18	\$0.22	\$0.24	\$0.26
Sienna Plantation MUD #2						
Monetary value of domestic water shortages	\$0.00	\$3.99	\$10.88	\$10.82	\$10.82	\$10.82
Lost income from reduced commercial business activity	\$0.00	\$0.00	\$2.10	\$2.09	\$2.09	\$2.09
Lost jobs due to reduced commercial business activity	0	0	66	66	66	66
Lost state and local taxes from reduced commercial business activity	\$0.00	\$0.00	\$0.30	\$0.30	\$0.30	\$0.30
Lost utility revenues	\$0.00	\$0.67	\$1.33	\$1.32	\$1.32	\$1.32
Simonton						
Monetary value of domestic water shortages	\$0.00	\$0.14	\$1.90	\$0.00	\$0.00	\$10.41
Lost income from reduced commercial business activity	\$0.00	\$0.00	\$0.00	\$0.00	\$0.00	\$1.49
Lost jobs due to reduced commercial business activity	0	0	0	0	0	47
Lost state and local taxes from reduced commercial business activity	\$0.00	\$0.00	\$0.00	\$0.00	\$0.00	\$0.21
Lost utility revenues	\$0.00	\$0.15	\$0.34	\$0.53	\$0.79	\$1.09
Southern Montgomery County MUD						
Monetary value of domestic water shortages	\$2.52	\$12.33	\$12.61	\$11.31	\$13.61	\$18.48
Lost income from reduced commercial business activity	\$0.00	\$0.00	\$1.21	\$0.71	\$1.41	\$1.96
Lost jobs due to reduced commercial business activity	0	0	49	29	57	79
Lost state and local taxes from reduced commercial business activity	\$0.00	\$0.00	\$0.19	\$0.11	\$0.22	\$0.30
Lost utility revenues	\$0.80	\$1.86	\$2.33	\$1.96	\$2.55	\$3.03
Southside Place						
Monetary value of domestic water shortages	\$0.01	\$0.27	\$0.08	\$0.13	\$0.17	\$0.25
Lost utility revenues	\$0.01	\$0.07	\$0.11	\$0.16	\$0.22	\$0.28
Southwest Utilities						
Monetary value of domestic water shortages	\$2.86	\$12.74	\$16.62	\$19.90	\$24.88	\$29.29
Lost income from reduced commercial business activity	\$0.00	\$3.67	\$5.29	\$6.05	\$7.38	\$8.56
Lost jobs due to reduced commercial business activity	0	116	168	193	241	281
Lost state and local taxes from reduced commercial business activity	\$0.00	\$0.52	\$0.76	\$0.87	\$1.06	\$1.24
Lost utility revenues	\$0.50	\$1.26	\$1.68	\$1.98	\$2.36	\$2.81

Municipal (cont.)						
	2010	2020	2030	2040	2050	2060
Splendor						
Monetary value of domestic water shortages	\$0.39	\$1.79	\$2.41	\$3.58	\$6.74	\$9.69
Lost income from reduced commercial business activity	\$0.00	\$0.00	\$0.15	\$0.28	\$0.92	\$1.35
Lost jobs due to reduced commercial business activity	0	0	6	11	37	54
Lost state and local taxes from reduced commercial business activity	\$0.00	\$0.00	\$0.02	\$0.04	\$0.14	\$0.21
Lost utility revenues	\$0.09	\$0.19	\$0.31	\$0.47	\$0.71	\$0.98
Spring Creek UD						
Monetary value of domestic water shortages	\$1.11	\$4.89	\$6.47	\$7.27	\$11.42	\$19.80
Lost income from reduced commercial business activity	\$0.00	\$0.00	\$0.40	\$0.29	\$0.78	\$2.72
Lost jobs due to reduced commercial business activity	0	0	16	12	31	109
Lost state and local taxes from reduced commercial business activity	\$0.00	\$0.00	\$0.06	\$0.05	\$0.12	\$0.42
Lost utility revenues	\$0.23	\$0.48	\$0.77	\$0.80	\$1.37	\$2.05
Spring Valley						
Monetary value of domestic water shortages	\$2.89	\$13.65	\$18.14	\$18.89	\$19.86	\$21.43
Lost income from reduced commercial business activity	\$0.00	\$4.23	\$5.46	\$5.68	\$5.98	\$6.31
Lost jobs due to reduced commercial business activity	0	133	172	179	188	199
Lost state and local taxes from reduced commercial business activity	\$0.00	\$0.60	\$0.78	\$0.81	\$0.85	\$0.90
Lost utility revenues	\$0.53	\$1.27	\$1.50	\$1.55	\$1.62	\$1.70
Stagecoach						
Monetary value of domestic water shortages	\$0.16	\$0.85	\$1.99	\$2.01	\$3.99	\$6.25
Lost income from reduced commercial business activity	\$0.00	\$0.00	\$0.09	\$0.33	\$0.55	\$0.87
Lost jobs due to reduced commercial business activity	0	0	4	13	22	35
Lost state and local taxes from reduced commercial business activity	\$0.00	\$0.00	\$0.01	\$0.05	\$0.09	\$0.13
Lost utility revenues	\$0.04	\$0.09	\$0.16	\$0.26	\$0.40	\$0.60
Stanley Lake MUD						
Monetary value of domestic water shortages	\$1.53	\$7.20	\$10.64	\$6.27	\$7.47	\$10.73
Lost income from reduced commercial business activity	\$0.00	\$0.00	\$0.00	\$0.25	\$0.50	\$0.68
Lost jobs due to reduced commercial business activity	0	0	0	10	20	27
Lost state and local taxes from reduced commercial business activity	\$0.00	\$0.00	\$0.00	\$0.04	\$0.08	\$0.11
Lost utility revenues	\$0.34	\$0.76	\$0.94	\$0.76	\$0.97	\$1.14

Municipal (cont.)						
	2010	2020	2030	2040	2050	2060
Sugarland						
Monetary value of domestic water shortages	\$0.00	\$0.00	\$2.46	\$2.38	\$2.38	\$3.70
Lost utility revenues	\$0.00	\$0.00	\$4.40	\$4.26	\$4.26	\$5.91
Sunbelt FWSD						
Monetary value of domestic water shortages	\$1.40	\$30.82	\$75.69	\$89.34	\$103.77	\$117.01
Lost income from reduced commercial business activity	\$0.00	\$3.57	\$11.02	\$13.33	\$15.59	\$17.97
Lost jobs due to reduced commercial business activity	0	143	441	534	624	720
Lost state and local taxes from reduced commercial business activity	\$0.00	\$0.55	\$1.71	\$2.07	\$2.42	\$2.79
Lost utility revenues	\$1.58	\$5.81	\$7.79	\$9.14	\$10.47	\$11.88
Surfside Beach						
Monetary value of domestic water shortages	\$0.00	\$0.03	\$0.06	\$0.11	\$0.16	\$0.93
Lost utility revenues	\$0.00	\$0.04	\$0.08	\$0.12	\$0.16	\$0.20
Sweeney						
Monetary value of domestic water shortages	\$0.00	\$0.04	\$0.07	\$0.10	\$0.15	\$0.24
Lost utility revenues	\$0.00	\$0.06	\$0.11	\$0.15	\$0.22	\$0.30
Tomball						
Monetary value of domestic water shortages	\$1.27	\$41.40	\$55.40	\$83.23	\$97.91	\$119.44
Lost income from reduced commercial business activity	\$0.00	\$34.67	\$50.44	\$68.67	\$82.04	\$101.67
Lost jobs due to reduced commercial business activity	0	773	1,124	1,531	1,829	2,266
Lost state and local taxes from reduced commercial business activity	\$0.00	\$3.69	\$5.37	\$7.31	\$8.73	\$10.82
Lost utility revenues	\$1.44	\$4.23	\$5.63	\$7.45	\$8.78	\$10.74
Trail of the Lakes MUD						
Monetary value of domestic water shortages	\$2.98	\$17.25	\$19.66	\$22.03	\$22.03	\$22.03
Lost income from reduced commercial business activity	\$0.00	\$2.45	\$3.03	\$2.98	\$2.98	\$2.98
Lost jobs due to reduced commercial business activity	0	98	122	119	119	119
Lost state and local taxes from reduced commercial business activity	\$0.00	\$0.38	\$0.47	\$0.46	\$0.46	\$0.46
Lost utility revenues	\$0.78	\$1.76	\$2.00	\$1.96	\$1.96	\$1.96
Walker County Rural WSC						
Monetary value of domestic water shortages	\$0.00	\$0.10	\$0.14	\$0.14	\$0.15	\$0.19
Lost utility revenues	\$0.00	\$0.14	\$0.22	\$0.22	\$0.24	\$0.27

Municipal (cont.)						
	2010	2020	2030	2040	2050	2060
Waller						
Monetary value of domestic water shortages	\$0.01	\$0.23	\$1.69	\$3.70	\$8.58	\$7.99
Lost income from reduced commercial business activity	\$0.00	\$0.00	\$0.00	\$0.00	\$0.00	\$1.31
Lost jobs due to reduced commercial business activity	0	0	0	0	0	41
Lost state and local taxes from reduced commercial business activity	\$0.00	\$0.00	\$0.00	\$0.00	\$0.00	\$0.19
Lost utility revenues	\$0.01	\$0.30	\$0.55	\$0.81	\$1.11	\$1.45
Wallis						
Monetary value of domestic water shortages	\$0.00	\$0.02	\$0.03	\$0.04	\$0.04	\$0.06
Lost utility revenues	\$0.00	\$0.03	\$0.05	\$0.06	\$0.06	\$0.07
West Hardin WSC						
Monetary value of domestic water shortages	\$0.00	\$0.01	\$0.03	\$0.16	\$0.25	\$0.42
Lost utility revenues	\$0.00	\$0.01	\$0.03	\$0.04	\$0.05	\$0.07
West Harris County MUD #6						
Monetary value of domestic water shortages	\$1.85	\$12.81	\$15.47	\$8.54	\$8.42	\$8.42
Lost income from reduced commercial business activity	\$0.00	\$1.00	\$1.25	\$1.22	\$1.20	\$1.20
Lost jobs due to reduced commercial business activity	0	40	50	49	48	48
Lost state and local taxes from reduced commercial business activity	\$0.00	\$0.16	\$0.19	\$0.19	\$0.19	\$0.19
Lost utility revenues	\$0.33	\$0.78	\$0.89	\$0.87	\$0.86	\$0.86
West Harris County Regional Water Authority						
Monetary value of domestic water shortages	\$0.00	\$179.39	\$294.01	\$329.57	\$344.12	\$352.42
Lost income from reduced commercial business activity	\$0.00	\$0.00	\$228.89	\$271.73	\$286.11	\$293.75
Lost jobs due to reduced commercial business activity	0	0	5,102	6,057	6,378	6,548
Lost state and local taxes from reduced commercial business activity	\$0.00	\$0.00	\$24.36	\$28.92	\$30.45	\$31.26
Lost utility revenues	\$0.00	\$42.61	\$63.03	\$71.05	\$74.30	\$76.41
West University Place						
Monetary value of domestic water shortages	\$0.49	\$0.77	\$0.98	\$1.32	\$1.80	\$6.95
Lost utility revenues	\$0.78	\$1.10	\$1.40	\$1.68	\$2.03	\$2.41

Municipal (cont.)						
	2010	2020	2030	2040	2050	2060
Willis						
Monetary value of domestic water shortages	\$0.75	\$3.33	\$4.25	\$4.64	\$6.97	\$6.42
Lost income from reduced commercial business activity	\$0.00	\$0.00	\$1.07	\$0.76	\$1.87	\$3.18
Lost jobs due to reduced commercial business activity	0	0	34	24	59	100
Lost state and local taxes from reduced commercial business activity	\$0.00	\$0.00	\$0.15	\$0.11	\$0.27	\$0.45
Lost utility revenues	\$0.24	\$0.50	\$0.79	\$0.80	\$1.30	\$1.90
Willow Run Subdivision						
Monetary value of domestic water shortages	\$2.18	\$8.61	\$9.96	\$9.77	\$9.65	\$9.65
Lost income from reduced commercial business activity	\$0.00	\$1.16	\$1.42	\$1.40	\$1.38	\$1.38
Lost jobs due to reduced commercial business activity	0	46	57	56	55	55
Lost state and local taxes from reduced commercial business activity	\$0.00	\$0.18	\$0.22	\$0.22	\$0.21	\$0.21
Lost utility revenues	\$0.39	\$0.90	\$1.01	\$0.99	\$0.98	\$0.98
Windfern Forest UD						
Monetary value of domestic water shortages	\$0.92	\$11.79	\$13.88	\$13.73	\$13.73	\$13.73
Lost income from reduced commercial business activity	\$0.00	\$1.53	\$1.94	\$1.92	\$1.92	\$1.92
Lost jobs due to reduced commercial business activity	0	61	78	77	77	77
Lost state and local taxes from reduced commercial business activity	\$0.00	\$0.24	\$0.30	\$0.30	\$0.30	\$0.30
Lost utility revenues	\$0.32	\$1.20	\$1.36	\$1.34	\$1.34	\$1.34
Wood Branch						
Monetary value of domestic water shortages	\$0.38	\$1.60	\$1.83	\$2.29	\$3.61	\$4.54
Lost income from reduced commercial business activity	\$0.00	\$0.00	\$0.30	\$0.45	\$1.25	\$1.67
Lost jobs due to reduced commercial business activity	0	0	9	14	39	53
Lost state and local taxes from reduced commercial business activity	\$0.00	\$0.00	\$0.04	\$0.06	\$0.18	\$0.24
Lost utility revenues	\$0.08	\$0.17	\$0.24	\$0.30	\$0.38	\$0.48
Wood Creek MUN						
Monetary value of domestic water shortages	\$2.05	\$10.77	\$15.55	\$19.89	\$24.00	\$27.83
Lost income from reduced commercial business activity	\$0.00	\$1.45	\$2.22	\$2.80	\$3.39	\$3.98
Lost jobs due to reduced commercial business activity	0	58	89	112	136	160
Lost state and local taxes from reduced commercial business activity	\$0.00	\$0.22	\$0.34	\$0.43	\$0.53	\$0.62
Lost utility revenues	\$0.37	\$1.13	\$1.58	\$1.95	\$2.32	\$2.70

Municipal (cont.)						
	2010	2020	2030	2040	2050	2060
The Woodlands						
Monetary value of domestic water shortages	\$19.44	\$149.15	\$162.28	\$96.11	\$152.29	\$206.39
Lost income from reduced commercial business activity	\$0.00	\$134.57	\$152.10	\$66.22	\$128.96	\$175.60
Lost jobs due to reduced commercial business activity	0	1,872	2,115	921	1,794	2,442
Lost state and local taxes from reduced commercial business activity	\$0.00	\$10.83	\$12.24	\$5.33	\$10.38	\$14.14
Lost utility revenues	\$6.17	\$28.03	\$30.73	\$22.09	\$28.27	\$32.92

Agenda Item 8

Agency communications and general information.

