

REGION H

Water Planning Group

POPULATION DEMANDS COMMITTEE MEETING MATERIALS

July 26, 2016

**Freese and Nichols, Inc.
Houston Office**

**Region H Water Planning Group
Population Demands Committee
3:00 PM Tuesday
July 26, 2016
Freese and Nichols Houston Office
10497 Town and Country Way, Suite 600, Houston, TX 77024**

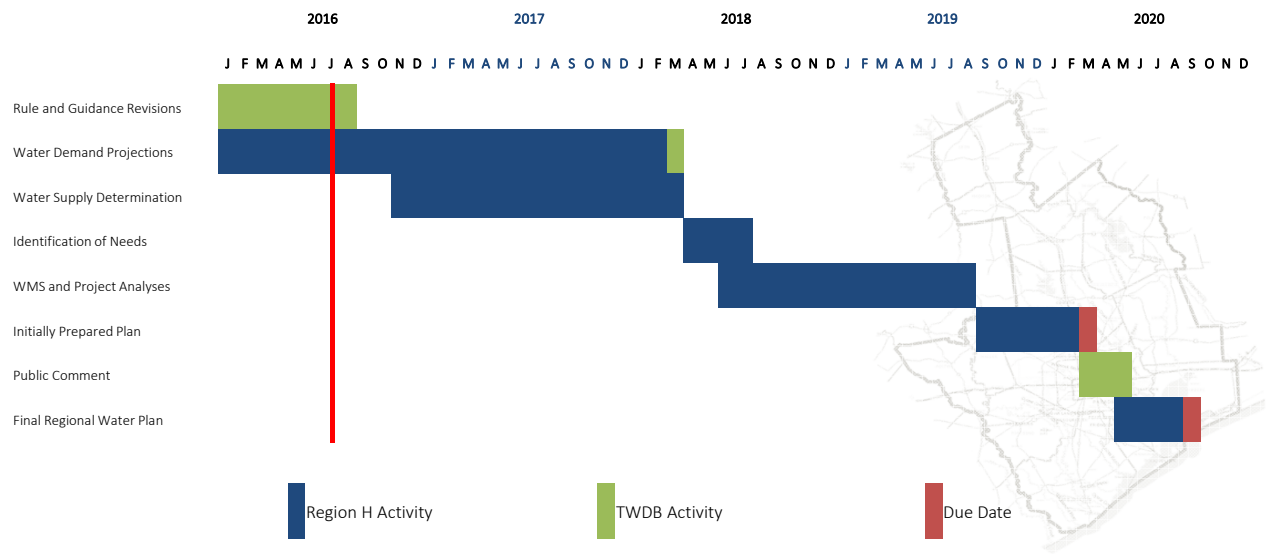
AGENDA

1. Introductions.
2. **Receive public comments on specific issues related to agenda items 3 through 6.** (Public comments limited to 3 minutes per speaker)
3. Discuss Committee activities and schedule.
4. Receive presentation on and discuss proposed TWDB rule changes.
5. Receive presentation on and discuss identified municipal WUGs and TWDB's request for recommendations.
6. Consider recommendations to the Region H Planning Group regarding private utilities, facilities, and collective reporting units for the 2021 Regional H Regional Water Plan.
7. **Receive public comments.** (Public comments limited to 3 minutes per speaker)
8. Adjourn

Agenda Item 3

Discuss Committee activities and schedule.

Agenda Item 3 Committee Activities and Schedule



Agenda Item 3 Committee Activities and Schedule

Date	Scheduled Events/Tasks
03/2016	TWDB releases list of potential municipal WUGs
07/26/2016	Population Demands Committee Meeting: Discuss municipal WUGs
08/03/2016	RWPG Meeting: Discuss Committee recommendations
09/30/2016	DUE DATE: RWPG recommendations on potential municipal WUGs to TWDB.
12/2016	TWDB to release draft municipal population and water demand projections
07/2017	Estimated release date for historical utility GPCDs
01/2018	DUE DATE: Adjustment requests to TWDB
09/2018	DUE DATE: Technical Memorandum
03/2020	DUE DATE: Initially Prepared Plan
09/2020	DUE DATE: FINAL RWP

Agenda Item 4

Receive presentation on and discuss proposed TWDB rule changes.

Agenda Item 4 TWDB Rule Changes

- What
 - Utility-based planning
- Purpose
 - Clarity
 - Consistency
 - Aligns more closely with how water is provided (and funded)



Agenda Item 4 TWDB Rule Changes

Old Rules

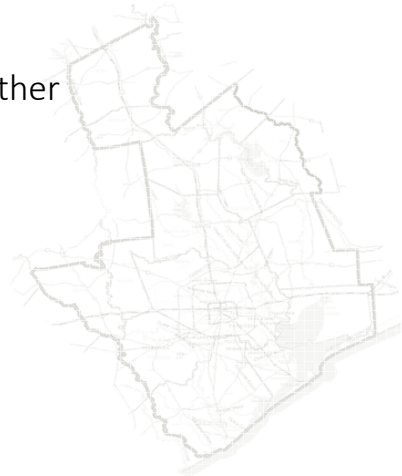
- Incorporated Census places with population >500
- Lone Census Designated Place in a county
- Retail public utilities providing >280 ac-ft
- Collective Reporting Units (CRUs)

Proposed Rules

- Provide >100 ac-ft water for municipal use
- Automatic
 - Retail public utilities owned by political subdivision (Cities, utility districts, etc.)
- With RWPG / entity request
 - CRUs
 - Privately owned utilities
 - State or Federal Facilities
- This cycle, based on 2011 or 2014 Water Use Survey

Agenda Item 4 TWDB Rule Changes

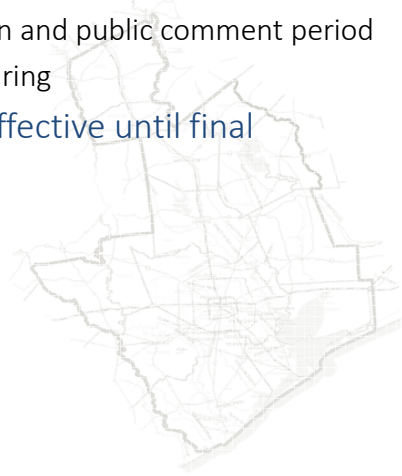
- What happens?
 - Some small WUGs go to County-Other
 - Others become named WUGs
 - No Water Use Survey = assumed to be in County-Other
 - WUGs served by others get rolled into provider(s)
- What does this mean to Region H?
 - More municipal WUGs (and data to track)
 - But...
 - More logical
 - Eliminates longstanding issues



Agenda Item 4 TWDB Rule Changes



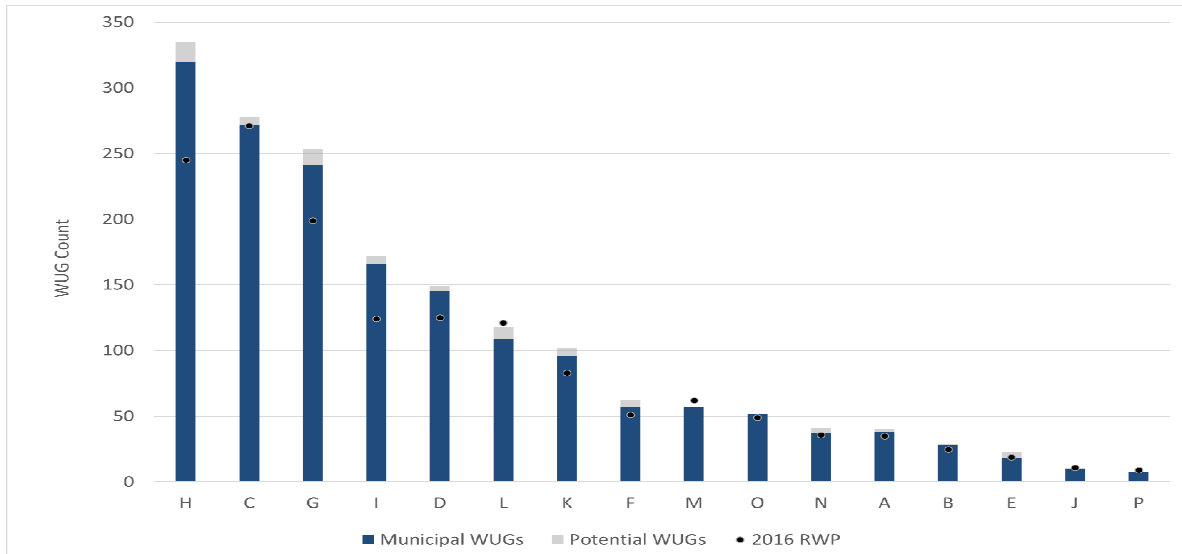
- Later this year
 - TWDB Board consideration
 - Publication and public comment period
 - Public hearing
- Rules not effective until final adoption



Agenda Item 5

Receive presentation on and discuss identified municipal WUGs and TWDB's request for recommendations.

Agenda Item 5 Municipal WUGs



Agenda Item 5 Municipal WUGs

- Increase in Region H Municipal WUGS
 - 2016 RWP: 245
 - 2021 RWP: 320 (+ 15 potential)
- Additions
 - Cities
 - FWSD
 - MUDs, UD, PUDs
 - WCIDs, IDs
 - Etc.
- Name changes
 - Transitions to County Other
 - Reassignment to water utilities



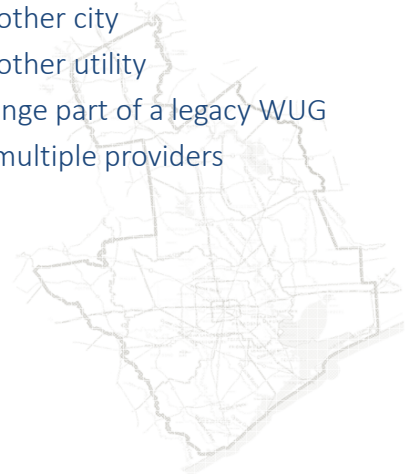
Agenda Item 5 Municipal WUGs

Changes to County Other

- Inactive systems
- No city utility
- Served by another non-qualifying system
- Supplied by private wells
- Below 100 ac-ft criterion
- Failure to complete Water Use Survey

Other Name Changes

- Served by another city
- Served by another utility
- May only change part of a legacy WUG
- May involve multiple providers



Agenda Item 5 Municipal WUGs

- Collective Reporting Units (CRUs)
 - Central Harris County Regional Water Authority
 - Greatwood
 - North Channel Water Authority
 - North Fort Bend Water Authority
 - North Harris County Regional Water Authority
 - Sienna Plantation
 - The Woodlands
 - West Harris County Regional Water Authority



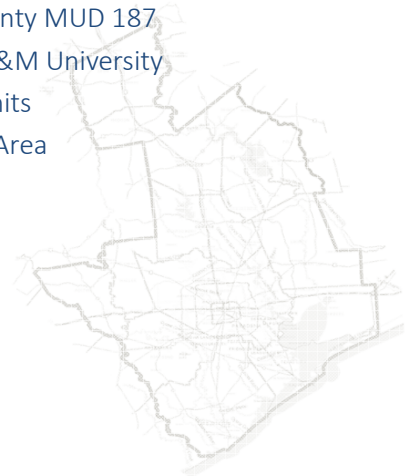
Agenda Item 5 Municipal WUGs

Privately-Owned Utilities

- Brazos River Club
- Domestic Water
- Douglas Utility
- Johnston Water Utility
- Oak Hollow Utility
- Pinewood Community
- Rice University
- Royal Valley Utilities
- Southern Water
- The Commons Water Supply
- White Oak Utilities

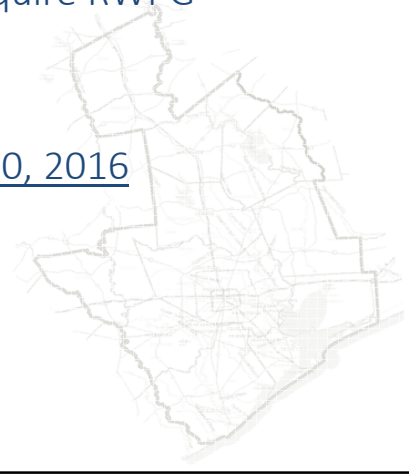
State or Federally-Owned Facilities

- Fort Bend County MUD 187
- Prairie View A&M University
- TDCJ Jester Units
- TDCJ Ramsey Area



Agenda Item 5 Municipal WUGs

- CRUs must be recommended by RWPG
- Private utilities and state or federal facilities require RWPG recommendation AND entity interest
- Entity request can be fairly informal
- Due to TWDB project manager by September 30, 2016
- May consider entity IOUs as well



Region H
Preliminary 2021 RWP WUG List

Name	Water Use (ac-ft)	
	2011	2014
ALVIN	3,268	2,599
ANAHUAC	288	216
ANGLETON	2,179	2,094
AUSTIN COUNTY WSC	233	183
BACLIFF MUD	698	558
BAYBROOK MUD 1	230	153
BAYTOWN	10,995	10,657
BAYVIEW MUD	144	132
BELLAIRE	3,997	3,097
BELLVILLE	1,215	787
BLUE RIDGE WEST MUD	1,047	761
BOLIVAR PENINSULA SUD	936	1,002
BRAZORIA	346	307
BRAZORIA COUNTY MUD 2	1,588	681
BRAZORIA COUNTY MUD 21	564	507
BRAZORIA COUNTY MUD 25	369	358
BRAZORIA COUNTY MUD 29	231	197
BRAZORIA COUNTY MUD 3	686	470
BRAZORIA COUNTY MUD 31	251	202
BRAZORIA COUNTY MUD 6	1,305	988
BROOKSHIRE MWD	594	492
BUFFALO	356	362
BUNKER HILL VILLAGE	1,678	1,125
BUTLER WSC	235	139
CAPE ROYALE UD	254	175
CENTERVILLE	176	156
CENTRAL HARRIS COUNTY REGIONAL WATER AUTHORITY	5,301	5,077
CHAMBERS COUNTY MUD 1	251	
CHATEAU WOODS MUD	223	175
CHIMNEY HILL MUD	602	515
CLEAR BROOK CITY MUD	1,665	2,021
CLEAR LAKE CITY WATER AUTHORITY	13,090	8,445
CLEVELAND	1,609	1,124
CLUTE	1,611	1,289
CONCORD-ROBBINS WSC	334	284
CONROE	10,648	9,295
CORINTHIAN POINT MUD 2	194	114
CROSBY MUD	501	467
CUT & SHOOT	362	331
DAISETTA	124	104
DANBURY	197	151
DAYTON	1,692	1,443
DEER PARK	5,084	5,460
DEVERS	155	57
DOBBIN PLANTERSVILLE WSC	440	489
DODGE OAKHURST WSC	169	133
EAST PLANTATION UD	355	228
EL DORADO UD	416	341

Region H
Preliminary 2021 RWP WUG List

Name	Water Use (ac-ft)	
	2011	2014
FAR HILLS UD	241	142
FIRST COLONY MUD 9	1,482	993
FLO COMMUNITY WSC	368	400
FOREST HILLS MUD	219	216
FORT BEND COUNTY MUD 111	1,011	686
FORT BEND COUNTY MUD 112	872	726
FORT BEND COUNTY MUD 115	803	498
FORT BEND COUNTY MUD 116	933	545
FORT BEND COUNTY MUD 121	524	394
FORT BEND COUNTY MUD 128	99	682
FORT BEND COUNTY MUD 129	752	652
FORT BEND COUNTY MUD 140	2,513	2,097
FORT BEND COUNTY MUD 149	41	326
FORT BEND COUNTY MUD 152	110	89
FORT BEND COUNTY MUD 155	257	237
FORT BEND COUNTY MUD 158	166	143
FORT BEND COUNTY MUD 162	202	204
FORT BEND COUNTY MUD 23	1,409	1,150
FORT BEND COUNTY MUD 24	107	116
FORT BEND COUNTY MUD 25	2,080	1,572
FORT BEND COUNTY MUD 26	544	354
FORT BEND COUNTY MUD 42	784	549
FORT BEND COUNTY MUD 46	497	362
FORT BEND COUNTY MUD 47	140	190
FORT BEND COUNTY MUD 48	258	233
FORT BEND COUNTY MUD 49	172	118
FORT BEND COUNTY MUD 5		120
FORT BEND COUNTY MUD 67	820	565
FORT BEND COUNTY MUD 68	711	462
FORT BEND COUNTY MUD 69	487	337
FORT BEND COUNTY MUD 81	1,467	1,097
FORT BEND COUNTY WCID 2	7,649	6,021
FORT BEND COUNTY WCID 3	376	221
FREEPORT	1,497	1,362
FRIENDSWOOD	6,809	5,889
FULSHEAR	153	1,056
G & W WSC	481	422
GALENA PARK	977	770
GALVESTON	16,279	16,111
GALVESTON COUNTY FWSD 6	253	223
GALVESTON COUNTY MUD 12	295	253
GALVESTON COUNTY WCID 1	2,631	2,146
GALVESTON COUNTY WCID 12	896	802
GALVESTON COUNTY WCID 8	673	570
GLENDALE WSC	105	85
GREATWOOD CRU	1,953	2,229
GREEN TRAILS MUD	667	282
GREENWOOD UD	335	324

Region H
Preliminary 2021 RWP WUG List

Name	Water Use (ac-ft)	
	2011	2014
GROVETON	125	132
GULF UTILITY	833	835
HARDIN WSC	525	407
HARRIS COUNTY FWSD 1-A	140	96
HARRIS COUNTY FWSD 27	203	196
HARRIS COUNTY FWSD 58	342	185
HARRIS COUNTY MUD 106	519	538
HARRIS COUNTY MUD 11	338	313
HARRIS COUNTY MUD 119	693	680
HARRIS COUNTY MUD 122	129	112
HARRIS COUNTY MUD 132	1,605	1,093
HARRIS COUNTY MUD 148	345	298
HARRIS COUNTY MUD 151	1,177	846
HARRIS COUNTY MUD 152	1,052	808
HARRIS COUNTY MUD 153	1,396	1,047
HARRIS COUNTY MUD 154	1,118	959
HARRIS COUNTY MUD 158	762	622
HARRIS COUNTY MUD 180	524	469
HARRIS COUNTY MUD 189	601	597
HARRIS COUNTY MUD 216	164	202
HARRIS COUNTY MUD 221	384	341
HARRIS COUNTY MUD 278	741	793
HARRIS COUNTY MUD 290	574	990
HARRIS COUNTY MUD 321		181
HARRIS COUNTY MUD 342	520	395
HARRIS COUNTY MUD 344	693	536
HARRIS COUNTY MUD 36	387	351
HARRIS COUNTY MUD 361	449	375
HARRIS COUNTY MUD 372	1,299	825
HARRIS COUNTY MUD 386		312
HARRIS COUNTY MUD 400		583
HARRIS COUNTY MUD 412	606	593
HARRIS COUNTY MUD 420	130	111
HARRIS COUNTY MUD 46	610	455
HARRIS COUNTY MUD 49	601	528
HARRIS COUNTY MUD 5	487	417
HARRIS COUNTY MUD 50	435	313
HARRIS COUNTY MUD 55	1,674	1,526
HARRIS COUNTY MUD 58	153	235
HARRIS COUNTY MUD 8	530	468
HARRIS COUNTY MUD 96	518	514
HARRIS COUNTY UD 14	120	374
HARRIS COUNTY UD 15	535	288
HARRIS COUNTY WCID 1	926	845
HARRIS COUNTY WCID 133	724	893
HARRIS COUNTY WCID 156	293	205
HARRIS COUNTY WCID 50	406	417
HARRIS COUNTY WCID 70	226	203

Region H
Preliminary 2021 RWP WUG List

Name	Water Use (ac-ft)	
	2011	2014
HARRIS COUNTY WCID 74	664	652
HARRIS COUNTY WCID 89	579	673
HARRIS COUNTY WCID 96	1,259	1,170
HARRIS COUNTY WCID-FONDREN ROAD	319	225
HEMPSTEAD	1,199	715
HILLCREST VILLAGE	128	91
HILLTOP LAKES WSC	211	163
HILSHIRE VILLAGE	206	137
HITCHCOCK	863	787
HMW SUD	1,776	1,203
HOUSTON	473,220	312,014
HUMBLE	2,570	2,946
HUNTSVILLE	7,842	9,271
JACINTO CITY	889	949
JAMAICA BEACH	272	187
JERSEY VILLAGE	1,947	1,426
JEWETT	203	152
KATY	3,654	2,903
KENDLETON	124	58
KINGS MANOR MUD	545	377
KIRKMONT MUD	393	385
LA MARQUE	2,495	2,755
LA PORTE	4,520	4,050
LAKE BONANZA WSC	189	141
LAKE CONROE HILLS MUD	181	132
LAKE JACKSON	5,614	3,765
LAKE LIVINGSTON WATER SUPPLY AND SEWER SERVICE	1,562	1,346
LAKE MUD	342	450
LAZY RIVER IMPROVEMENT DISTRICT	152	92
LEAGUE CITY	12,086	11,986
LEGGETT WSC	277	289
LIBERTY	1,497	1,454
LIBERTY COUNTY FWSD 1 HULL	107	75
LIVINGSTON	2,378	2,076
LONGHORN TOWN UD	434	316
LUCE BAYOU PUD	128	77
MADISON COUNTY WSC	163	110
MADISONVILLE	956	867
MAGNOLIA	427	405
MANVEL	176	161
MASON CREEK UD	1,780	1,246
MEADOWCREEK MUD	343	223
MEADOWS PLACE	827	506
MEMORIAL POINT UD	136	97
MEMORIAL VILLAGES WATER AUTHORITY	5,855	4,096
MERCY WSC	197	177
MISSOURI CITY	296	273
MONT BELVIEU	1,726	1,281

Region H
Preliminary 2021 RWP WUG List

Name	Water Use (ac-ft)	
	2011	2014
MONTGOMERY	161	233
MONTGOMERY COUNTY MUD 112	283	412
MONTGOMERY COUNTY MUD 115	202	349
MONTGOMERY COUNTY MUD 119	125	226
MONTGOMERY COUNTY MUD 15	381	429
MONTGOMERY COUNTY MUD 18	1,556	1,266
MONTGOMERY COUNTY MUD 19	672	581
MONTGOMERY COUNTY MUD 56	113	82
MONTGOMERY COUNTY MUD 8	933	
MONTGOMERY COUNTY MUD 83	406	303
MONTGOMERY COUNTY MUD 84	398	345
MONTGOMERY COUNTY MUD 88	90	144
MONTGOMERY COUNTY MUD 89	801	560
MONTGOMERY COUNTY MUD 9	911	1,392
MONTGOMERY COUNTY MUD 95	19	147
MONTGOMERY COUNTY MUD 98	143	163
MONTGOMERY COUNTY MUD 99	154	157
MONTGOMERY COUNTY UD 2	383	280
MONTGOMERY COUNTY UD 3	575	968
MONTGOMERY COUNTY UD 4	850	
MONTGOMERY COUNTY WCID 1	372	306
MORGANS POINT	156	175
MOSCOW WSC	53	312
MOUNT HOUSTON ROAD MUD	462	441
NASSAU BAY	1,107	932
NEEDVILLE	340	284
NEW CANEY MUD	1,037	947
NEW WAVERLY	194	144
NEWPORT MUD	895	895
NORMANGEE	119	99
NORTH BELT UD	516	388
NORTH CHANNEL WATER AUTHORITY CRU	9,888	8,677
NORTH FOREST MUD	198	161
NORTH FORT BEND WATER AUTHORITY CRU	37,652	33,275
NORTH GREEN MUD	421	446
NORTH HARRIS COUNTY REGIONAL WATER AUTHORITY CRU	107,195	86,726
NORTH ZULCH MUD	213	124
NORTHWEST HARRIS COUNTY MUD 16	460	339
OAK RIDGE NORTH	607	464
ONALASKA WSC	360	281
ONE FIVE O WSC	244	244
OYSTER CREEK	262	204
P B & S C WSC	215	183
PALMER PLANTATION MUD 1	399	268
PALMER PLANTATION MUD 2	332	277
PANORAMA VILLAGE	538	397
PARKWAY MUD	583	526
PASADENA	21,771	18,419

Region H
Preliminary 2021 RWP WUG List

Name	Water Use (ac-ft)	
	2011	2014
PATTISON WSC	210	162
PEARLAND	14,889	14,462
PECAN GROVE MUD 1	2,816	2,052
PHELPS SUD		194
PINE VILLAGE PUD	155	137
PINEHURST DECKER PRAIRIE WSC	93	103
PLANTATION MUD	495	387
POINT AQUARIUS MUD	560	378
PORTER SUD	769	1,601
PRAIRIE VIEW	683	328
PROVIDENCE WSC	156	171
QUAIL VALLEY UD	2,162	1,457
RANCH UTILITIES	117	113
RAYFORD ROAD MUD	1,798	1,307
RICHMOND	1,937	1,977
RICHWOOD	405	145
RIVER PLANTATION MUD	713	460
RIVERSIDE WSC	336	377
ROMAN FOREST CONSOLIDATED MUD	252	252
ROSENBERG	4,070	3,603
SAGEMEADOW UD	820	612
SAN JACINTO SUD	309	233
SAN LEON MUD	639	562
SEABROOK	1,864	1,492
SEALY	1,308	1,038
SEDONA LAKES MUD 1	126	166
SEQUOIA IMPROVEMENT DISTRICT	144	96
SHENANDOAH	1,191	1,044
SHEPHERD	308	341
SHOREACRES	355	174
SIENNA PLANTATION CRU	2,822	
SIENNA PLANTATION MANAGEMENT DISTRICT	197	
SIENNA PLANTATION MUD 10	778	821
SIENNA PLANTATION MUD 12	263	672
SODA WSC	166	186
SOUTH CLEVELAND WSC	188	140
SOUTH HOUSTON	2,173	1,783
SOUTHEAST WSC	268	244
SOUTHERN MONTGOMERY COUNTY MUD	1,651	1,336
SOUTHSIDE PLACE	283	283
SOUTHWEST HARRIS COUNTY MUD 1	134	111
SPLENDORA	817	682
SPRING CREEK UD	1,163	851
SPRING MEADOWS MUD	323	295
SPRING VALLEY	1,067	792
STANLEY LAKE MUD	691	549
SUGARLAND	23,831	17,800
SUNBELT FWSD	2,502	1,914

Region H
Preliminary 2021 RWP WUG List

Name	Water Use (ac-ft)	
	2011	2014
SURFSIDE BEACH	163	
SWEENEY	512	409
TARKINGTON SUD	378	335
TEMPE WSC 1	191	188
TEXAS CITY	6,570	4,996
THE CONSOLIDATED WSC		1,622
THE WOODLANDS CRU	22,583	16,579
THUNDERBIRD UD	986	757
TOMBALL	2,838	2,386
TRAIL OF THE LAKES MUD	906	705
TRINITY	424	251
TRINITY BAY CONSERVATION DISTRICT	1,637	1,439
TRINITY RURAL WSC	421	320
VALLEY RANCH MUD 1	645	180
VARNER CREEK UD	302	183
WALKER COUNTY RURAL SUD		1,865
WALLER	439	431
WALLIS	165	136
WATERWOOD MUD 1	117	88
WEBSTER	2,128	1,960
WEST COLUMBIA	491	419
WEST END WSC	271	202
WEST HARDIN WSC	343	253
WEST HARRIS COUNTY MUD 6	388	291
WEST HARRIS COUNTY REGIONAL WATER AUTHORITY CRU	60,193	53,068
WEST UNIVERSITY PLACE	3,125	2,304
WESTWOOD NORTH WSC	457	293
WESTWOOD SHORES MUD	155	142
WHITE OAK WSC		102
WILLIS	748	755
WOOD BRANCH VILLAGE	115	115
WOODCREEK MUD	425	413

Region H
Municipal WUG Name Changes

2016 RWP Name	New Name	Reason for Change
AMIES	COUNTY-OTHER	No city utility - served by another utility - not meeting criteria
ARCOLA	COUNTY-OTHER	Not meeting criteria
BAILEY'S PRAIRIE	COUNTY-OTHER	Private wells
BAYOU VISTA	GALVESTON COUNTY MUD 12	No city utility - served by another utility
BEACH CITY	COUNTY-OTHER	No city utility - served by another utility (IOU) - not meeting criteria
BEASLEY	COUNTY-OTHER	Not meeting criteria
BENDERS LANDING WATER SYSTEM	COUNTY-OTHER	IOU - not meeting criteria
BLUE BELL MANOR UTILITY COMPANY	COUNTY-OTHER	IOU - not meeting criteria
BRAZORIA COUNTY MUD #4	COUNTY-OTHER	Not active
BROOKSIDE VILLAGE	PEARLAND	No city utility - served by another city utility
CLEAR LAKE SHORES	GALVESTON COUNTY WCID 12	No city utility - served by another utility
COLDSRING	SAN JACINTO SUD	No city utility - served by another city utility
COVE	COUNTY-OTHER	Private wells
DICKINSON	GALVESTON COUNTY WCID 1	No city utility - served by another utility
EL LAGO	HARRIS COUNTY WCID 50	No city utility - served by another utility
FAIRCHILDS	COUNTY-OTHER	Private wells
FOUNTAINVIEW SUBDIVISION	DOUGLAS UTILITY (or COUNTY-OTHER)	Need a request to be included
HARDIN	HARDIN WSC	No city utility - served by another utility
HEDWIG VILLAGE	MEMORIAL VILLAGES WATER AUTHORITY	No city utility - served by another utility
HOLIDAY LAKES	COUNTY-OTHER	Not meeting criteria
HUNTERS CREEK VILLAGE	MEMORIAL VILLAGES WATER AUTHORITY	No city utility - served by another utility
INDIGO LAKE WATER SYSTEM	COUNTY-OTHER	IOU - not meeting criteria
IOWA COLONY	BRAZORIA COUNTY MUD 31	No city utility - served by another utility
JONES CREEK	COUNTY-OTHER	No city utility - served by another utility (IOU) - not meeting criteria
KEMAH	BAYVIEW MUD	No city utility - served by another utility
KEMAH	GALVESTON COUNTY WCID 12	No city utility - served by another utility
KENEFICK	COUNTY-OTHER	No city utility - served by another utility (IOU) - not meeting criteria
LAKE WINDCREST WATER SYSTEM	COUNTY-OTHER	IOU - not meeting criteria
MISSOURI CITY	FORT BEND COUNTY MUD 129	No city utility - served by another utility
MISSOURI CITY	BLUE RIDGE WEST MUD	No city utility - served by another utility
MISSOURI CITY	FORT BEND COUNTY MUD 115	No city utility - served by another utility
MISSOURI CITY	FORT BEND COUNTY MUD 26	No city utility - served by another utility
MISSOURI CITY	FORT BEND COUNTY MUD 42	No city utility - served by another utility
MISSOURI CITY	FORT BEND COUNTY MUD 46	No city utility - served by another utility
MISSOURI CITY	FORT BEND COUNTY MUD 47	No city utility - served by another utility
MISSOURI CITY	FORT BEND COUNTY MUD 48	No city utility - served by another utility
MISSOURI CITY	FORT BEND COUNTY MUD 49	No city utility - served by another utility
MISSOURI CITY	FORT BEND COUNTY MUD 5	No city utility - served by another utility
MISSOURI CITY	FORT BEND COUNTY WCID 2	No city utility - served by another utility
MISSOURI CITY	FIRST COLONY MUD 9	No city utility - served by another utility
MISSOURI CITY	HARRIS COUNTY MUD 122	No city utility - served by another utility
MISSOURI CITY	HARRIS COUNTY WCID-FONDREN ROAD	No city utility - served by another utility
MISSOURI CITY	MEADOWCREEK MUD	No city utility - served by another utility
MISSOURI CITY	PALMER PLANTATION MUD 1	No city utility - served by another utility
MISSOURI CITY	PALMER PLANTATION MUD 2	No city utility - served by another utility

Region H
Municipal WUG Name Changes

2016 RWP Name	New Name	Reason for Change
MISSOURI CITY	QUAIL VALLEY UD	No city utility - served by another utility
MISSOURI CITY	SIENNA PLANTATION MUD 12	No city utility - served by another utility
MISSOURI CITY	SOUTHWEST HARRIS COUNTY MUD 1	No city utility - served by another utility
MISSOURI CITY	THUNDERBIRD UD	No city utility - served by another utility
OAKWOOD	BUTLER WSC	No city utility - served by another utility
OLD RIVER-WINFREE	COUNTY-OTHER	No city utility - served by another utility (IOU) - not meeting criteria
ONALASKA	ONALASKA WSC	No city utility - served by another utility
PATTON VILLAGE	COUNTY-OTHER	No city utility - served by another utility (IOU) - not meeting criteria
PINE ISLAND	COUNTY-OTHER	No city utility - served by another utility (IOU) - not meeting criteria
PINEY POINT VILLAGE	MEMORIAL VILLAGES WATER AUTHORITY	No city utility - served by another utility
PLEAK	FORT BEND COUNTY MUD 5	No city utility - served by another utility
PLUM GROVE	COUNTY-OTHER	Private wells
POINT BLANK	LAKE LIVINGSTON WATER SUPPLY AND SEWER SERVICE	No city utility - served by another utility
POINT BLANK	P B & S C WSC	No city utility - served by another utility
RIVERSIDE	RIVERSIDE WSC	No city utility - served by another utility
ROMAN FOREST	ROMAN FOREST CONSOLIDATED MUD	No city utility - served by another utility
SAN FELIPE	COUNTY-OTHER	Private wells
SANTA FE	GALVESTON COUNTY WCID 8	No city utility - served by another utility
SIMONTON	COUNTY-OTHER	Private wells
STAFFORD	FORT BEND COUNTY WCID 2	No city utility - served by another utility
STAGECOACH	PINEHURST DECKER PRAIRIE WSC	No city utility - served by another utility
TAYLOR LAKE VILLAGE	COUNTY-OTHER	No city utility - served by another utility
THE COMMONS WATER SUPPLY INC	THE COMMONS WATER SUPPLY (or COUNTY-OTHER)	Need a request to be included
TIKI ISLAND	GALVESTON COUNTY FWSD 6	No city utility - served by another utility
WESTON LAKES	FORT BEND COUNTY MUD 81	No city utility - served by another utility
WOODLAND HILLS WATER COMPANY	COUNTY-OTHER	IOU - not meeting criteria

Region H
2021 RWP CRUs and Potential Municipal WUGs

Type	Name
Collective Reporting Unit	CENTRAL HARRIS COUNTY REGIONAL WATER AUTHORITY
	GREATWOOD CRU
	NORTH CHANNEL WATER AUTHORITY CRU
	NORTH FORT BEND WATER AUTHORITY CRU
	NORTH HARRIS COUNTY REGIONAL WATER AUTHORITY CRU
	SIENNA PLANTATION CRU
	THE WOODLANDS CRU
	WEST HARRIS COUNTY REGIONAL WATER AUTHORITY CRU
Private utility	BRAZOS RIVER CLUB
	DOMESTIC WATER
	DOUGLAS UTILITY
	JOHNSTON WATER UTILITY
	OAK HOLLOW UTILITY
	PINEWOOD COMMUNITY
	RICE UNIVERSITY
	ROYAL VALLEY UTILITIES
	SOUTHERN WATER
	THE COMMONS WATER SUPPLY
	WHITE OAK UTILITIES
State or Federal facility	FORT BEND COUNTY MUD 187
	PRAIRIE VIEW A&M UNIVERSITY
	TDCJ JESTER UNITS
	TDCJ RAMSEY AREA

